



ScanflowStore Solution Overview

September 2007

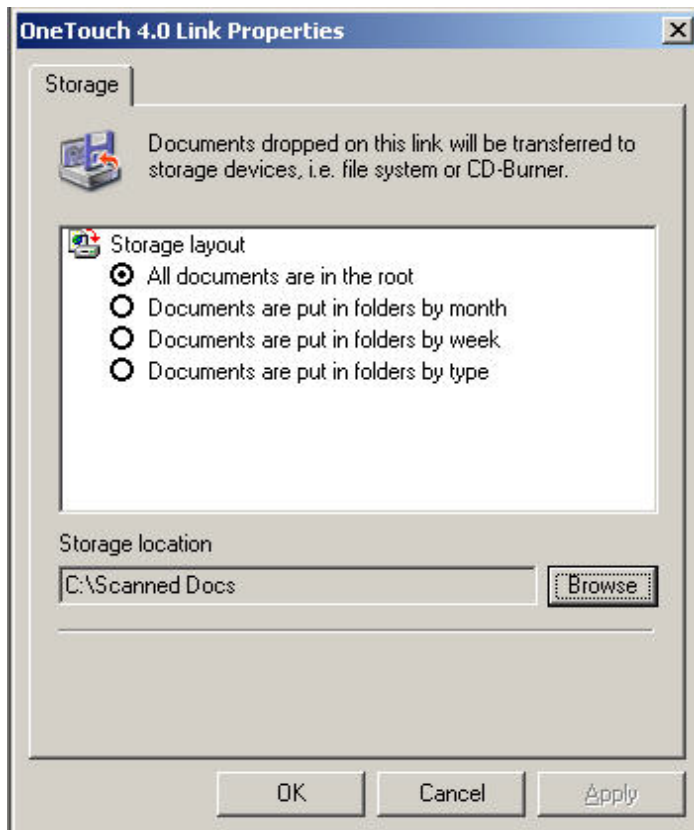
Scan to ScanFlowStore

- Xerox scanners provide the ability to scan directly to ScanFlowStore at the touch of a button...



- Simply place in the pages, press a button and the scanned images are uploaded
- Here's how..

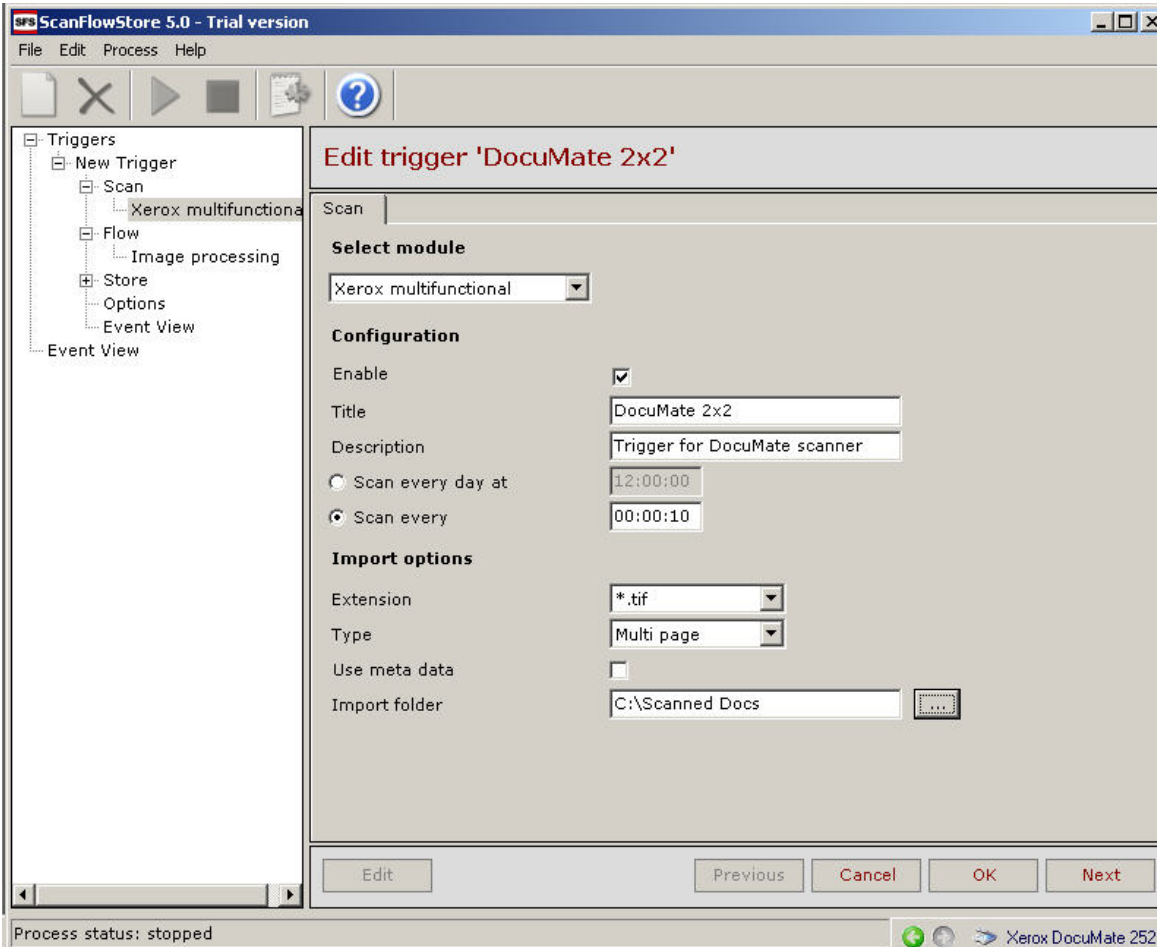
Scanning to ScanFlowStore



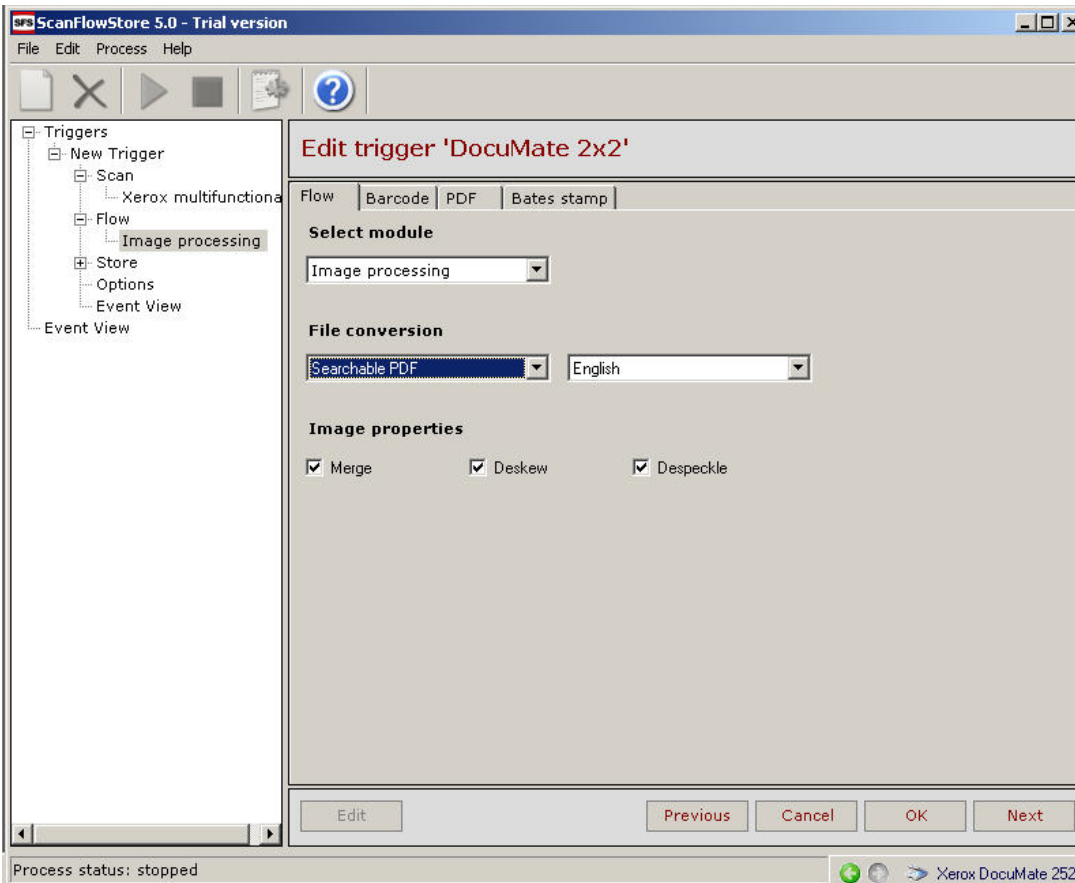
- Additional software for Xerox Office scanners and MFPs
- Possible bundle opportunities
- SFS is “middleware”
- Monitors folder for new image files, processes image and sends to new location or application
- Here, OT storage location set to “C:\Scanned Docs”

Scanning to ScanFlowStore

- Trigger created
- Set to monitor folder (C:\Scanned Docs)



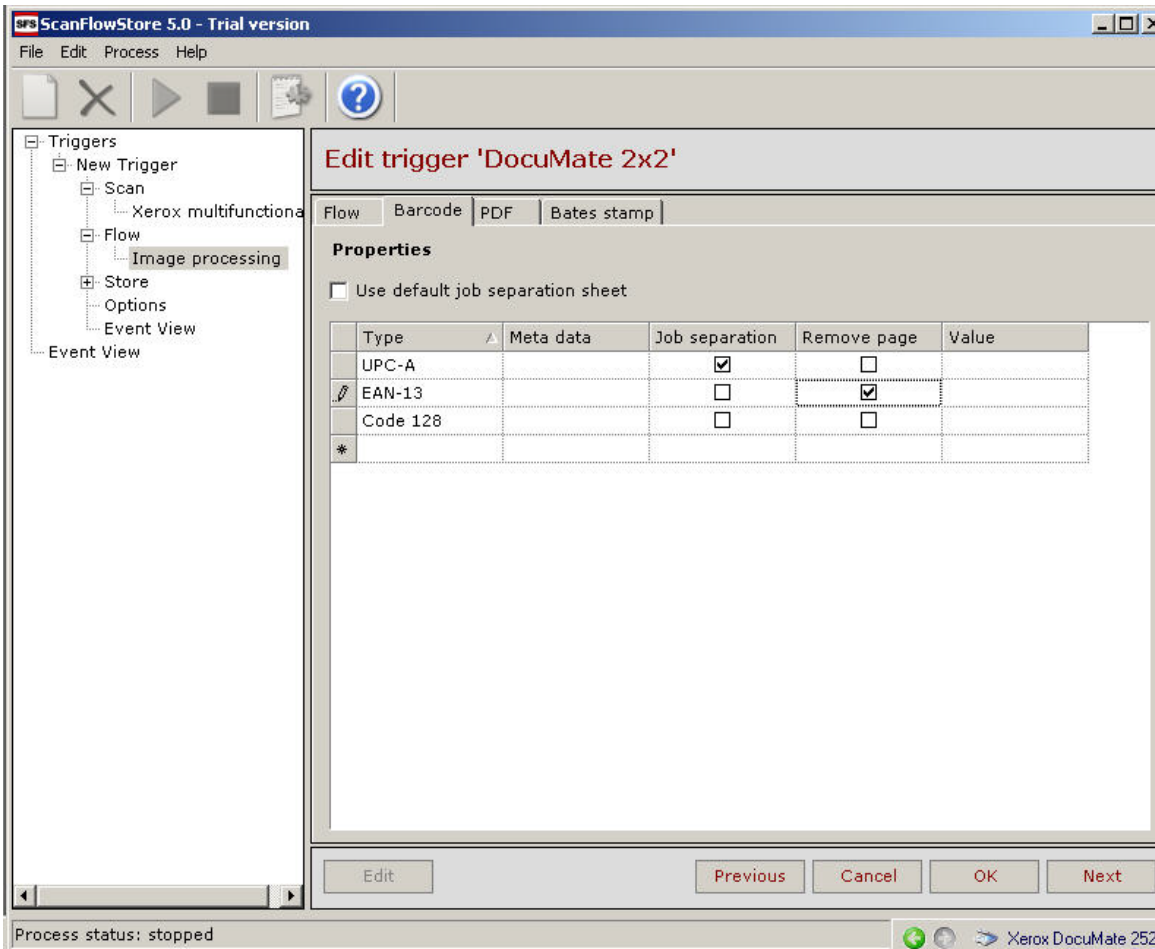
ScanFlowStore



- Set image processing
- Can convert file
- Merge, deskew, despeckle
- Process barcodes
- Alter PDF properties
- Add stamp

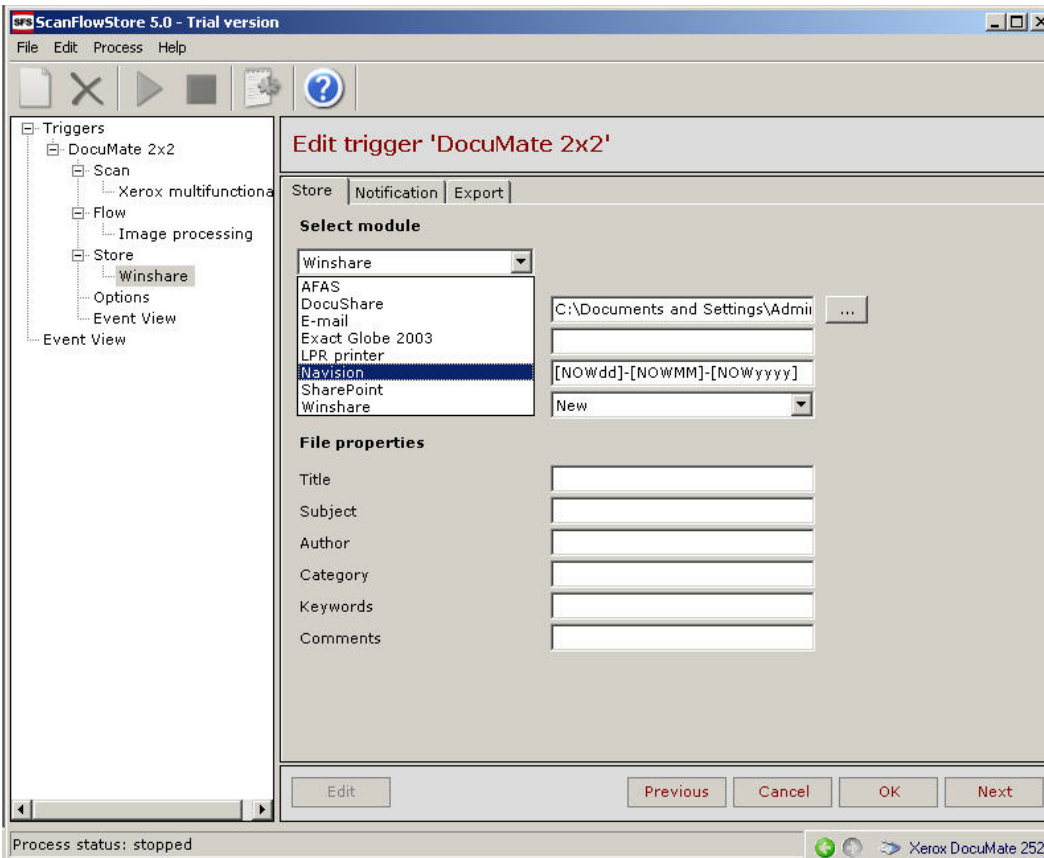
ScanFlowStore

- All types of barcode recognition
- Can use as job separator page

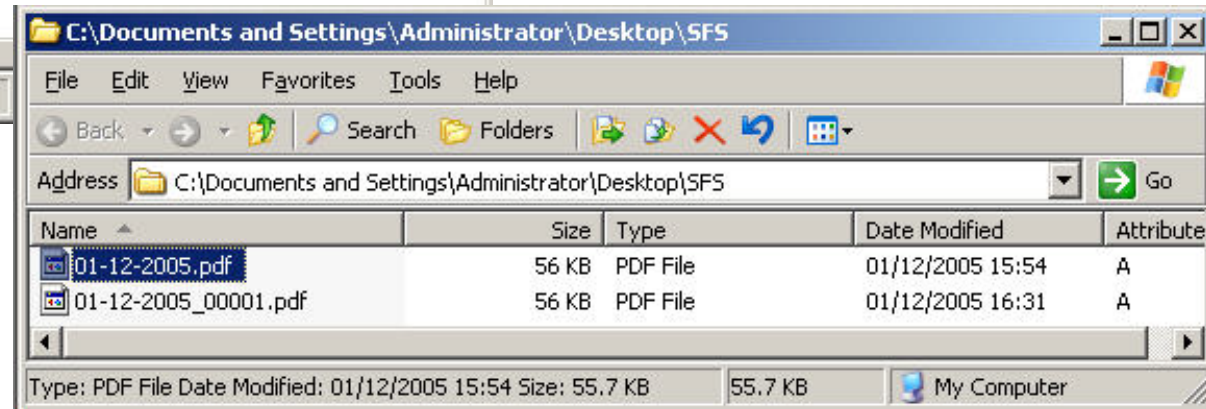
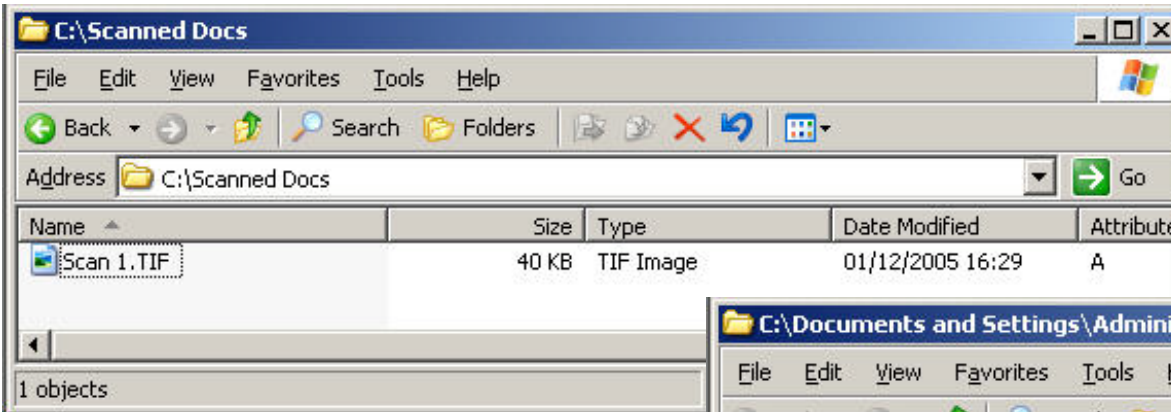


ScanFlowStore

- Can select destination or application, e.g.:
 - DocuShare/SharePoint/Navision/Email
- Here, destination is Desktop\SFS
- File name created from metadata, eg. Barcode number, date.



ScanFlowStore



- Trigger is set to run in the background, so folder is monitored
- Scanned image is seamlessly processed and moved to destination

- For use with Xerox SmartSend and any WorkCentre compatible software.
- To be able to offer Xerox DocuMate scanners to same customers as buy larger Xerox products; to be able to sell through Xerox channels.