



Visioneer OneTouch 7300 USB

Guide Rating - ★★★★★

The One Touch 7300 USB is a quick, well-designed scanner that is well suited for users who want a flatbed scanner that can be easily carried from site to site.

Description

There's something that's just plain neat about compact devices, and the Visioneer OneTouch 7300 USB is about as compact as you can get and still be capable of scanning an 8.5x11-inch sheet. It is 10.13 x 14.85 x 1.4 inches, which means that it's hardly thicker than a notebook. And at 3 lbs., 3 oz., it's light enough to add to your luggage without causing a backache.

Keep in mind, though, that because the 7300 is so small, you won't be able to scan any document larger than letter-sized; if you think you'll need to scan anything larger (and many of us do need to scan contracts, magazine articles, and other larger documents), you'll want to look elsewhere.

The slim scanner is a handsome device, with a silver cover over a dark grey body. On the front are five buttons labeled Copy, OCR, E-Mail, Custom, and SCAN; a single USB 2.0 port on the right front side of the device provides both power and the connection to your PC. The USB 2.0 connection means that, if you have a USB 2.0 port in your computer system, this scanner will be faster than its USB 1.1 cousins. If your computer only has a USB 1.1 connection, don't despair: The slower connection will work fine.

One nice feature: The cover is very well designed. A hinge at the back lets you lift the cover several inches away from the scanner bed, giving plenty of space for books and other bulky documents.



The cover of the 7300 is built to allow for thicker documents.

This is a perfect scanner to travel with. Although not on the same level of portability as a hand or line scanner, it seems ideal if you want a flatbed and you're on the go. For one thing, the 7300 gets all its power from its USB connection - so if you're working with a notebook, you can hook up the scanner without having to look for another power source. (If you're using a USB hub, by the way, the company suggests that the hub have its own power source).

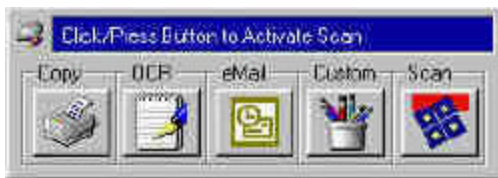
Installation

Installation of the 7300 went quite smoothly. The device comes with a CD that installs both the scanner driver and Paperport 8.0 software (you don't get the choice of installing the driver alone). A Quick Install Card instructs you to insert the CD and begin the installation before you connect the scanner to your USB port; just to make sure, a small piece of tape warning you to wait was placed across the USB port -- a nice touch.

By the way, if you're not the kind of person to immediately register your hardware -- and many of us are not -- be aware that the registration window that pops up as you are installing the driver does not

have to be immediately filled out. Just hit escape to get back to the installation. (The PaperPort 8.0 installer is a bit more honest -- it asks you to fill out the registration form, or choose to fill it out later.)

Performance



Clicking on the icon in your QuickLaunch bar brings up an onscreen version of the control panel.

The Onetouch 7300 is a quiet, fast scanner, with a very easy interface. You operate it by pressing the Copy, OCR, E-Mail, Scan or Custom buttons either on the scanner itself or on the button bar that appears when you press the icon on the Windows Quick Launch toolbar.

The scanner worked especially well with photographs; scans of family photos and landscapes seemed slightly duller than the originals, but otherwise, the colors looked clear and true. Plain text scans were also satisfactory.

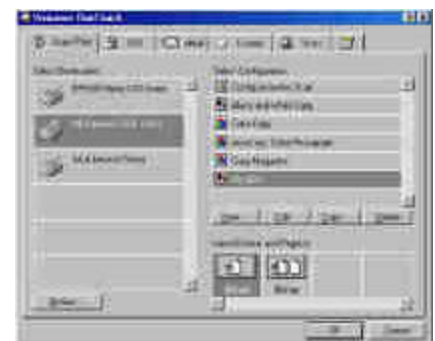
I was not as pleased with the OCR functionality, which seemed marginal, at best. I ran several different pages through the OCR process, and while it was able to handle a very simple printed page, it did not do well with anything that had very small print, or added graphics, or complex columns.

Software

The 7300's driver provides you with a lot of room to maneuver (although you need to have the inclination to explore -- there is no Help feature available here). The driver comes with a variety of preset configurations for users who want to simply scan-'n'-go (for example, "Scan Magazine" or Scan Document OCR Quality). Just hit the button, and the deed is done.

If you want to change the configuration, you can right-click on the appropriate button, and the OneTouch configuration screen pops up. A number of presets are available for each button: choose one, and it will become the default the next time you hit that button. And there's more: You can also create your own configuration, name it, and save it to the preset list -- for example, if you want to scan certain photographs at a very high resolution, you can create a configuration called Great Photos, set the resolution to high, change the gamma ratings to whatever you wish, and save it. You can also save the file destination -- say, to a different printer, or to your favorite photo editing software.

And wait! There's even more. If you're really picky about your scans, you can select "Configure Before Scan" on the driver for any of the buttons. Then, when you hit the button to initiate the scan, Visioneer Scan Manager will pop up. Scan Manager allows you to do a preview scan, and lets you tweak a variety of color, grey scale, or black and white functions, including scan size, resolution, brightness, color saturation and hue, etc. While this will be useful for anyone who really wants to play with their scans, it may prove a bit overwhelming for users who simply want to scan a business letter or an old family photo.



Right-clicking on the button bar lets you configure each feature.

Paperport 8.0, which is installed with the scanner, is a solid scan software package with a some nice imaging features. For example, it will sharpen an image, get rid of red-eye, rotate, and erase. The tools should be sufficient for most basic business and family uses, but if you've got more intricate digital tweaking to do -- for example, the smallest size of the "eraser" is too large for subtle changes -- you'll want a more elaborate graphics package.

Support

Visioneer's Web site offers a good amount of online support information, including FAQs, drivers,

manuals, and other downloads. You can also use SARA, a Web bot that offers answers to simply-phrased questions. I tried SARA and found that the service was useful -- to an extent. It gave an answer to why, when I used the Copy function, the copies of one of my documents were printing out with the first inch or so cropped -- however, the directions it gave as to how to fix the problem were gauged specifically to a Windows XP interface. Visioneer offers a feedback questionnaire after you use SARA; hopefully, the service will improve as more people use it.

Phone support is available on weekdays via a toll call on weekdays from 7 a.m. to 4 p.m. Pacific time. The first time I called, about 2 p.m. Eastern (11 a.m. Pacific), I was on hold for about 20 minutes before I gave up. The second time I called, about 5:15 p.m. Eastern, I got a tech support person immediately who was patient and obviously willing to be helpful.

~ [Barbara Krasnoff](#)

Copyright © [2004](#) About, Inc. About and About.com are registered trademarks of About, Inc. The About logo is a trademark of About, Inc. All rights reserved.