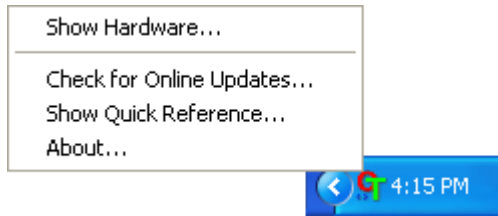


# How to Adjust the Power Save Settings for the 9650

1. Right-click on the OneTouch icon and choose **Show Hardware** from the pop-up menu.

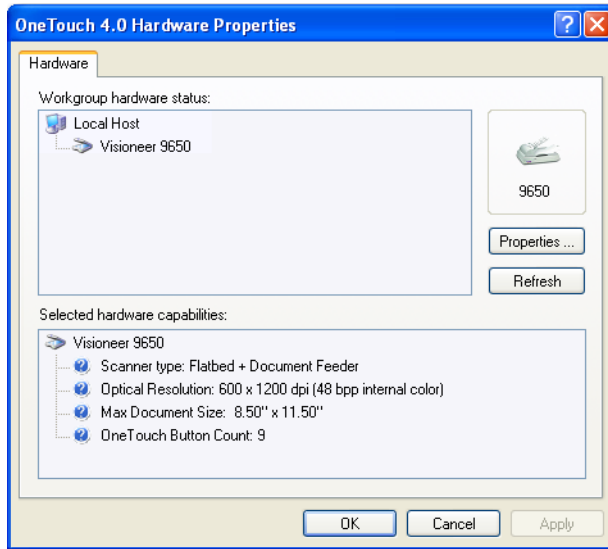


You can also click the scanner icon at the top of the OneTouch Button Panel.

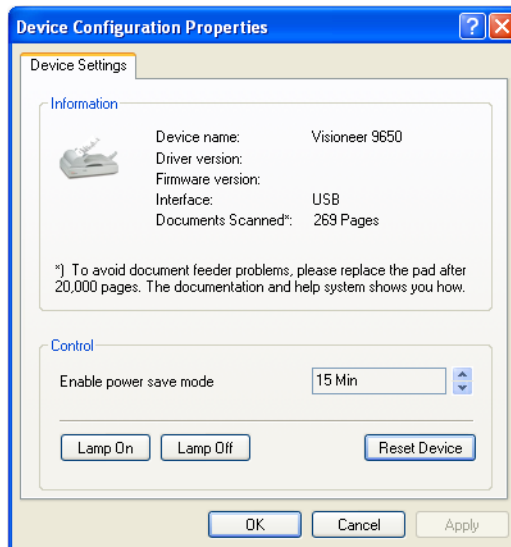


If the Hardware View of the panel is open you can also right-click on the 9650 icon.

The Hardware Properties dialog box opens and shows information about your Visioneer 9650 scanner.



2. Click the **Properties** button.



Your scanner has a built-in power saving feature that is set to power down after **15** minutes of idle time. You can change the time before the scanner powers down, from **1** minute to a maximum of **3** hours.

3. Click the arrows for the Lamp timeout setting and choose a time.

To turn the lamp on and off manually without turning off power to the scanner, click the **Lamp On** or **Lamp Off** buttons.

To return the scanner to its factory settings, click **Reset Device**.

4. Click **OK** to save the changes and close the dialog box.