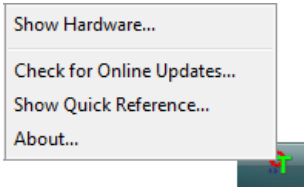


How to Adjust the Power Save Settings for the Patriot 680

1. Right-click on the OneTouch icon and choose **Show Hardware** from the pop-up menu.

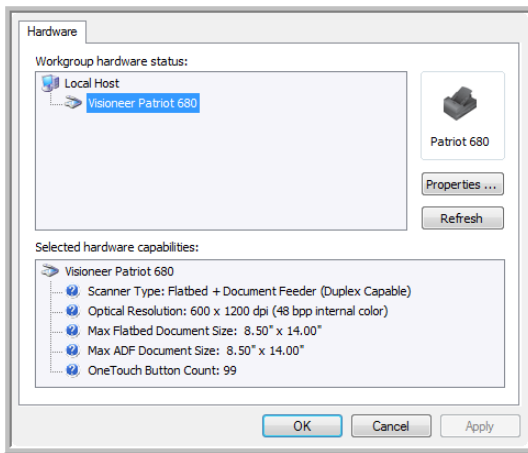


You can also click the scanner icon at the top of the OneTouch Button Panel, or right-click on the Patriot 680 icon in the panel Hardware view.

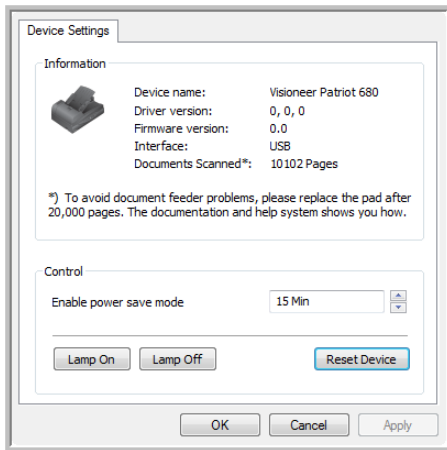
The Hardware icon



2. The Hardware Properties dialog box opens and shows information about your Visioneer Patriot 680 scanner.



3. Click the **Properties** button.



Your scanner has a built-in power saving feature that is set to power down after **15** minutes of idle time. You can change the time before the scanner powers down, from **1** minute to a maximum of **3** hours.

4. Click the arrows for the Lamp time-out setting and choose a time setting. To turn the lamp on and off manually, click the **Lamp On** or **Lamp Off** buttons. To return the scanner to its factory settings, click **Reset Device**.
5. Click **OK** to save the changes and close the dialog box.