

Visioneer Strobe XP 100 Scanner Installation Guide

FOR WINDOWS

COPYRIGHT INFORMATION

Copyright © 2002 Visioneer, Inc.

Reproduction, adaptation, or translation without prior written permission is prohibited, except as allowed under the copyright laws.

The Visioneer brand name and logo are registered trademarks of Visioneer, Inc. The PaperPort brand name and logo are registered trademarks of ScanSoft, Inc.

Microsoft is a U.S. registered trademark of Microsoft Corporation. Windows is a trademark of Microsoft Corporation. TextBridge is a registered trademark of ScanSoft, Inc. ZyINDEX is a registered trademark of ZyLAB International, Inc. ZyINDEX toolkit portions, Copyright © 1990-1998, ZyLAB International, Inc. All Rights Reserved. All other products mentioned herein may be trademarks of their respective companies.

Information is subject to change without notice and does not represent a commitment on the part of Visioneer. The software described is furnished under a licensing agreement. The software may be used or copied only in accordance with the terms of such an agreement. It is against the law to copy the software on any medium except as specifically allowed in the licensing agreement. No part of this document may be reproduced or transmitted in any form or by any means, electronic or mechanical, including photocopying, recording, or information storage and retrieval systems, or translated to another language, for any purpose other than the licensee's personal use and as specifically allowed in the licensing agreement, without the express written permission of Visioneer.

Part Number: 05-0525-100

Restricted Rights Legend

Use, duplication, or disclosure is subject to restrictions as set forth in contract subdivision (c)(1)(ii) of the Rights in Technical Data and Computer Software Clause 52.227-FAR14. Material scanned by this product may be protected by governmental laws and other regulations, such as copyright laws. The customer is solely responsible for complying with all such laws and regulations.

Visioneer's Limited Product Warranty

If you find physical defects in the materials or the workmanship used in making the product described in this document, Visioneer will repair, or at its option, replace, the product at no charge to you, provided you return it (postage prepaid, with proof of your purchase from the original reseller) during the 12-month period after the date of your original purchase of the product.

THIS IS VISIONEER'S ONLY WARRANTY AND YOUR EXCLUSIVE REMEDY CONCERNING THE PRODUCT; ALL OTHER REPRESENTATIONS, WARRANTIES OR CONDITIONS, EXPRESS OR IMPLIED, WRITTEN OR ORAL, INCLUDING ANY WARRANTY OF MERCHANTABILITY, FITNESS FOR A PARTICULAR PURPOSE OR NON-INFRINGEMENT, ARE EXPRESSLY EXCLUDED. AS A RESULT, EXCEPT AS SET OUT ABOVE, THE PRODUCT IS SOLD "AS IS" AND YOU ARE ASSUMING THE ENTIRE RISK AS TO THE PRODUCT'S SUITABILITY TO YOUR NEEDS, ITS QUALITY AND ITS PERFORMANCE.

IN NO EVENT WILL VISIONEER BE LIABLE FOR DIRECT, INDIRECT, SPECIAL, INCIDENTAL OR CONSEQUENTIAL DAMAGES RESULTING FROM ANY DEFECT IN THE PRODUCT OR FROM ITS USE, EVEN IF ADVISED OF THE POSSIBILITY OF SUCH DAMAGES.

All exclusions and limitations in this warranty are made only to the extent permitted by applicable law and shall be of no effect to the extent in conflict with the express requirements of applicable law.

FCC Radio Frequency Interference Statement

This equipment has been tested and found to comply with the limits for the class B digital device, pursuant to part 15 of the FCC Rules. These limits are designed to provide reasonable protection against interference in a residential installation. This equipment generates, uses and can radiate radio frequency energy and if not installed, and used in accordance with the instructions, may cause harmful interference to radio communications. However, there is no guarantee that interference will not occur in a particular installation. If this equipment does cause harmful interference to radio or television reception, which can be determined by turning the equipment off and on, the user is encouraged to try and correct the interference by one or more of the following measures:

- Reorient or relocate the receiving antenna.
- Increase the separation between the equipment and receiver.
- Connect the equipment into an outlet on a circuit different from that to which the receiver is connected.
- Consult the dealer or an experienced radio/TV technician for help.

This equipment has been certified to comply with the limits for a class B computing device, pursuant to FCC Rules. In order to maintain compliance with FCC regulations, shielded cables must be used with this equipment. Operation with non-approved equipment or unshielded cables is likely to result in interference to radio and TV reception. The user is cautioned that changes and modifications made to the equipment without the approval of manufacturer could void the user's authority to operate this equipment.

This device complies with part 15 of the FCC Rules. Operation is subject to the following two conditions: (1) This device may not cause harmful interference, and (2) this device must accept any interference received, including interference that may cause undesired operation.

TABLE OF CONTENTS

Welcome	1
What's in the Box	1
The Visioneer Strobe XP 100 Scanner	2
What You Need	3
Getting the PaperPort Online Documentation	3
Chapter 1: Installing	4
Step 1: Install the PaperPort Software	4
Step 2: Install the Scanner Software	6
Step 3: Connect and Calibrate the Scanner	7
Step 4: Install the Other Software	9
Checking Out Your Scanner	9
If the Scanner Does Not Scan Properly	12
Chapter 2: Scanning	13
Two Ways to Scan	13
Scanning by Pressing the Scanner Button	14
Use the Photo Sleeve to Scan a Photo	15
Configuring the Scanner Button	16
About the Configuration Dialog Box	17
Selecting New Settings for the Button	19
Creating New Button Configurations	20
Editing Your Scanner's Button Configurations	23
Setting Preferences	24
Scanning from the PaperPort Software	26
Scanning from a Computer Running Windows 98, Me, or 2000	27
Scanning from a Computer Running Windows XP	33
Fine Tuning Your Scans	36
Calibrating and Cleaning Your Scanner	38

Troubleshooting	42
How to Uninstall Your Scanner	44
Step 1: Uninstalling the Visioneer OneTouch Software	44
Step 2: Uninstalling the PaperPort Software	47
Contacting Visioneer US and Canada Technical Support	48
Contacting Visioneer—International Technical Support	49
Visioneer Strobe XP 100 Scanner Specifications	50

WELCOME

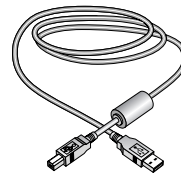
Congratulations on purchasing your Visioneer Strobe XP 100 USB scanner. With your scanner, you can quickly scan paper documents and color photos to place their electronic images on your computer.

WHAT'S IN THE BOX

Before starting the installation, check the contents of the box to make sure that all parts are included. If any items are missing or damaged, contact the dealer where you purchased the scanner.



Visioneer Strobe XP 100 Scanner



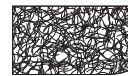
USB Cable



Software CD



Calibration Papers (2)



Cleaning Paper

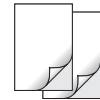


Photo Sleeves (2)

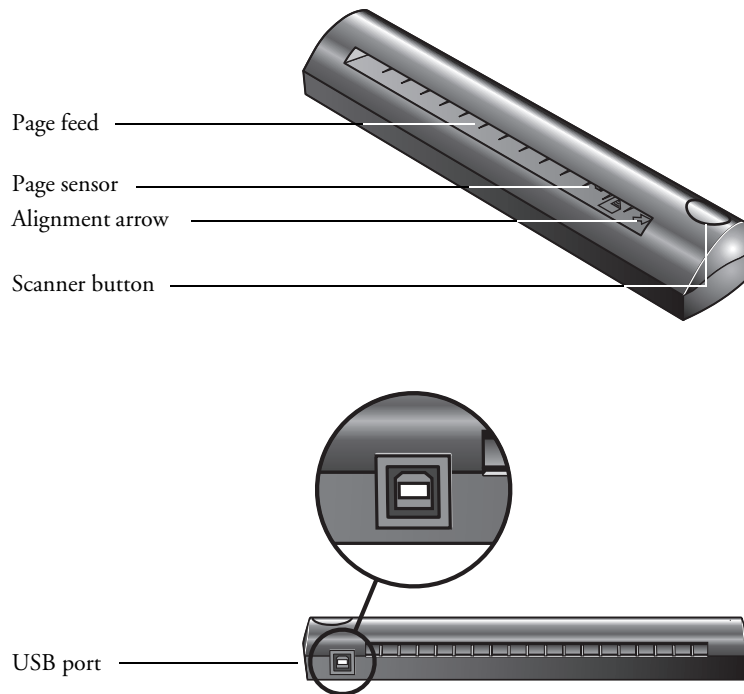


Getting Started Guide
and Quick Install Card



Carrying Case

THE VISIONEER STROBE XP 100 SCANNER



Page feed. Insert the item you want to scan into the page feed. The scanner grabs the item and pulls it through while scanning.

Page sensor. Recognizes when an item is inserted into the page feed so the scanner knows to begin scanning.

Alignment arrow. Shows where to align the top right corner of the item you're scanning.

Scanner button. Press to start scanning.

Universal Serial Bus (USB) port. Plug the USB cable into this port.

Note: The scanner does not have an on/off switch. Just insert a page into the page feed and press the scanner button to start scanning.

WHAT YOU NEED

To use the scanner and software, you need the following:

- IBM PC (or 100-percent compatible) Pentium or equivalent
- Microsoft Windows 98, Windows 2000, Windows Me, or Windows XP
- One available Universal Serial Bus (USB) port on your computer
- Available internal memory (RAM):
 - Windows 98—32 megabytes (MB) or more
 - Windows 2000, Me, or XP—64 MB or more; 128 MB recommended for Windows XP
- 70 MB of free hard disk space
- A VGA or SVGA monitor. Recommended settings for your monitor are as many colors as possible—High Color (16-bit), True Color (24-bit or 32-bit). Set the resolution to at least 800 by 600 pixels. To set your monitor's colors and resolution, open the Windows Control Panel, double-click Display, and then click the Settings tab.
- A CD-ROM drive

GETTING THE PAPERPORT ONLINE DOCUMENTATION

The Installation CD also includes your *ScanSoft PaperPort User's Guide*. This guide provides more detailed information about PaperPort's features. Please see the CD to view the manual. You can also print the manual from the CD.

Installing

Installation is a quick, four-step process:

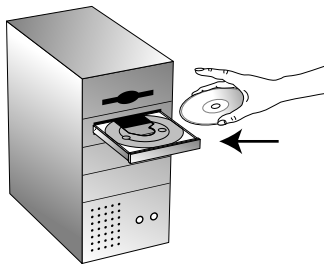
- Install the PaperPort software
- Install the scanner software
- Connect and calibrate the scanner
- Install the other software on the CD

STEP 1: INSTALL THE PAPERPORT SOFTWARE

Note: You must install the PaperPort software *before* connecting the scanner to your computer. Otherwise, the correct driver software for your scanner will not be installed and it may not work properly.

To install the PaperPort software:

1. Start Microsoft Windows and make sure that no other applications are running.
2. Insert the CD into your computer's CD-ROM drive. The CD automatically starts.



Note: If the CD does not automatically start, make sure the CD drive's door is completely shut. If the CD still doesn't start, click the Windows icon that shows the drives on your computer. (Usually, the icon is named My Computer.) The window shows the drives available on your computer. Double-click the icon for your CD-ROM drive to see the list of files on the CD. Double-click the file named START32.EXE. The CD starts.

The Installation screen appears.

3. Select **Install ScanSoft PaperPort**.



4. Follow the instructions on the screen.
5. When installation is finished and the screen appears to restart your computer, click **Yes**.
6. Remove the CD from the CD-ROM drive.
7. After your computer and Windows have restarted, re-insert the CD into the CD-ROM drive so you can install the scanner software.

STEP 2: INSTALL THE SCANNER SOFTWARE

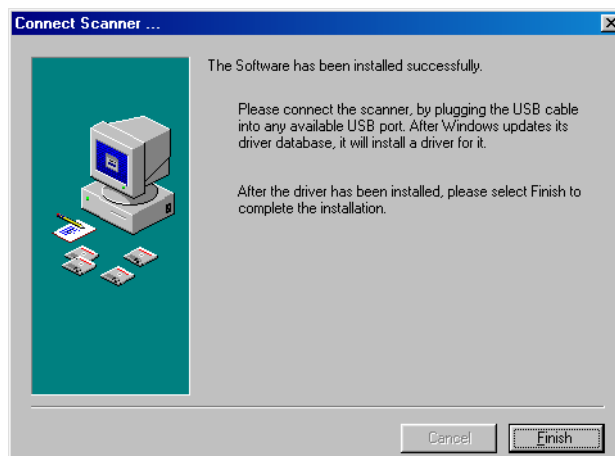
1. On the Installation screen, click **Install Scanner**.



2. Follow the instructions on the screen.

During installation of the scanner software, a message instructs you to connect the scanner to the computer.

Do not click the **Finish** button yet.



3. Follow the steps in the next section to connect the scanner. When you're finished, then click **Finish** in the dialog box above.

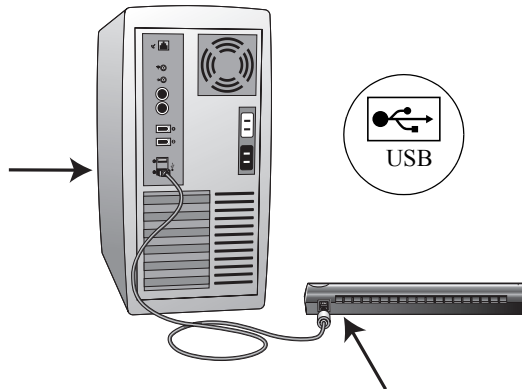
STEP 3: CONNECT AND CALIBRATE THE SCANNER

The Visioneer Strobe XP 100 scanner connects to any available USB port. Check your computer's manual for the USB port location.

Note: You connect the scanner to your computer while the computer is running. You do not have to shut down your computer.

To connect your Visioneer Strobe XP 100 scanner:

1. Plug the USB cable into the USB port on the back of the scanner.
2. Plug the other end of the USB cable into any USB port on your computer.

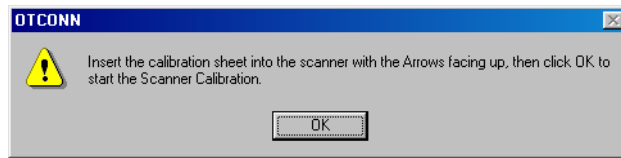


The USB symbol identifies the location of the USB port on your computer. If the plug does not attach easily, make sure that you are plugging it in correctly. Do not force the plug into the connection.

Note: You can also connect the scanner to a USB port on the computer's keyboard if it has one, or to a USB hub. If you use a USB hub, it must have its own power supply already plugged into an electrical outlet.

Your computer recognizes that a scanner has been plugged into the USB port and automatically configures its driver database with the appropriate software to run the scanner.

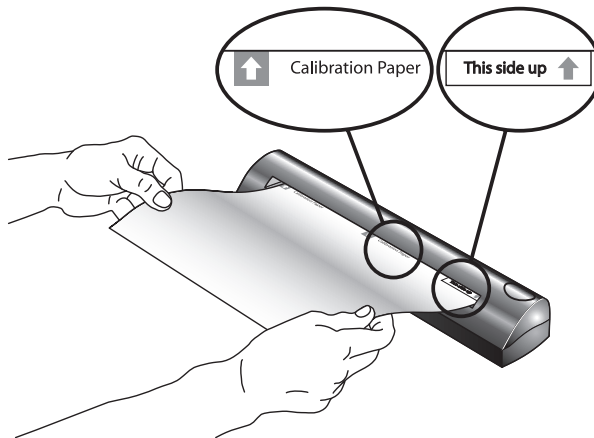
3. Now click the **Finish** button on the Connect Scanner dialog box.
A dialog box appears so you can calibrate the scanner.



To calibrate the scanner:

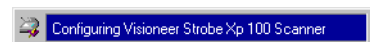
1. Insert the Calibration Paper that you received with the scanner into the Page Feed until the scanner “grabs” the paper.

Insert the paper face down. The instructions on the back of the paper show the correct way to insert the paper.



The scanner feeds the paper through automatically.

When calibration is finished, messages at the bottom of the screen tell you that the scanner is being found and configured.



That completes the steps to connect your scanner to the computer.

2. Remove the CD from the CD-ROM drive and restart your computer.

STEP 4: INSTALL THE OTHER SOFTWARE

You can now install the other software on the CD.

1. After your computer and Windows restart, re-insert the CD into the CD-ROM drive.
2. On the Installation screen, click **Additional Software and Guides**.



3. Follow the instructions on the screen to install the other software. When you're finished, remove the CD from the computer and store it in a safe place.

In addition to installing the other software from the CD, you can also view and print the *PaperPort User Guide* and the scanner's *Installation Guide*.

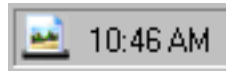
That's it! Your scanner is now ready to scan.

CHECKING OUT YOUR SCANNER

Your Visioneer Strobe XP 100 scanner comes with special software, called the **OneTouch** software, that you use to configure the button on the scanner. For example, to scan in black and white instead of color, you change the button's configuration using the OneTouch software.

The OneTouch software adds the scanner icon to the Windows taskbar (at the bottom right corner of the computer screen).

Scanner Icon —————

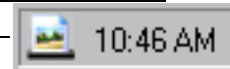


To see the configuration of the scanner button:

1. Place the mouse pointer on the scanner icon in the Windows taskbar.
2. Right-click the icon. The shortcut menu appears.



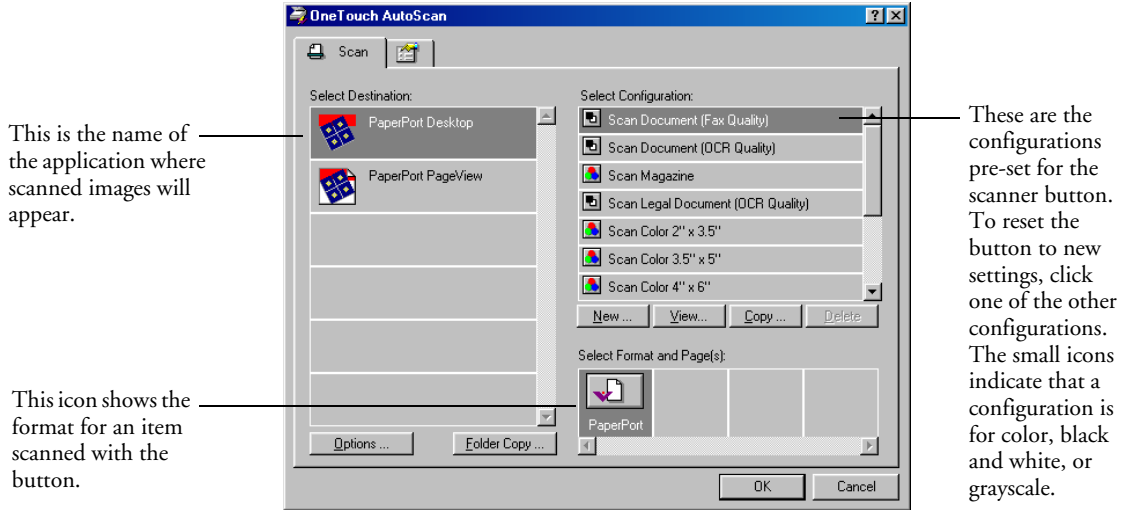
Right-click the Scanner Icon
to see the shortcut menu



3. Choose **Configure** from the shortcut menu.

The OneTouch Configuration dialog box shows the current settings for the scanner button.

For example, the following figure shows the settings pre-selected when you first receive your scanner. The Scan button is set up to scan the item in black and white with the configuration named Scan Document, and then after the scanning is finished, to open the PaperPort desktop to display the scanned image. The Format and Page(s) setting is to scan in the PaperPort image format.



Use this dialog box to change the settings of the scanner button. See “Configuring the Scanner Button” on page 16 for details.

4. Click **OK** to close the dialog box.

IF THE SCANNER DOES NOT SCAN PROPERLY

If the scanner does not scan properly, check for one of these possible problems:

- **Is the USB cable loose or not plugged in securely?** Inspect the cable connections. Make sure the cable is plugged in securely.
- **Did you restart the computer after installing the software?** If you didn't restart the computer, it may not have loaded all of the software files. Try restarting your computer.
- **Did you plug the scanner into a USB hub?** If you're using a USB hub to connect the scanner, the hub must have its own power supply. If the hub does not have its own power supply, plug the scanner into a different USB port on the computer.

Please see the Readme file in the PaperPort directory on your computer's hard drive. The Readme file contains additional information that may help you diagnose problems with the scanner. Also see "Troubleshooting" on page 42 for more information.

If you try all the troubleshooting procedures described above and in the Readme file, and the scanner still does not scan properly, you may have a malfunctioning scanner. Please see "Contacting Visioneer US and Canada Technical Support" on page 48 or "Contacting Visioneer—International Technical Support" on page 49. Also visit our web site at www.visioneer.com for additional technical information.

Scanning

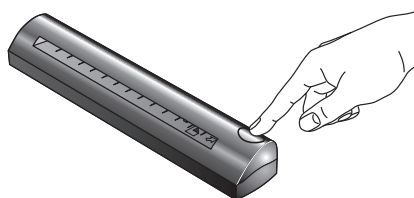
This section explains how to scan with your Strobe XP 100 scanner.

TWO WAYS TO SCAN

You can scan items by pressing the scanner button or by clicking a Scan button in the PaperPort software. The basic difference between the two methods is that when scanning with the button, you use the OneTouch software's scanning options, and when scanning from PaperPort you use its scanning options. Both methods scan equally well, so use the one with the appropriate options for the item you're scanning.

- **Scan with the scanner button**

Insert an item to scan and then press the scanner button. The item is scanned with the settings already selected for the button. For more details, see “Scanning by Pressing the Scanner Button” on page 14.



- **Scan from the PaperPort software**

To scan from the PaperPort software, start the software, and click the Scan icon on the PaperPort command bar.

You can then select scanning options before you start the scan. See “Scanning from the PaperPort Software” on page 26 for details.



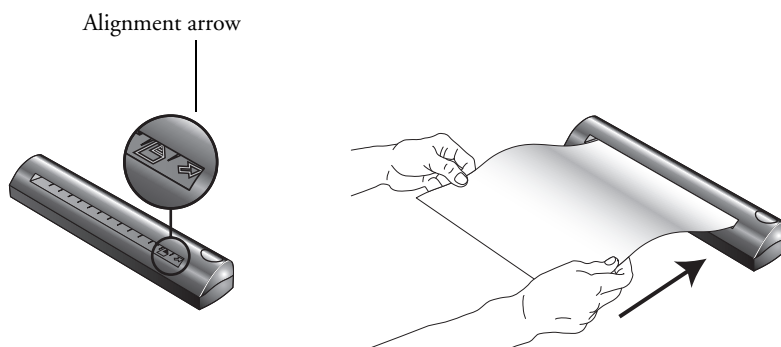
Note: Always remove any staples or paper clips from the documents before inserting them into the scanner. Staples and paper clips can jam the feed mechanism and scratch the internal components.

SCANNING BY PRESSING THE SCANNER BUTTON

Pressing the scanner button scans the item, and then sends the image to a software application or printer on your computer.

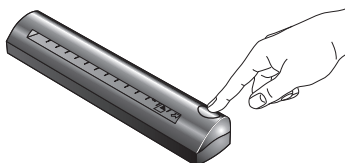
To scan with the scanner button:

1. Align the item with the arrow icon and insert the item, face down, into the paper feed slot.



The scanner grabs the top edge of the paper and holds it in place.

2. Now press the scanner button.

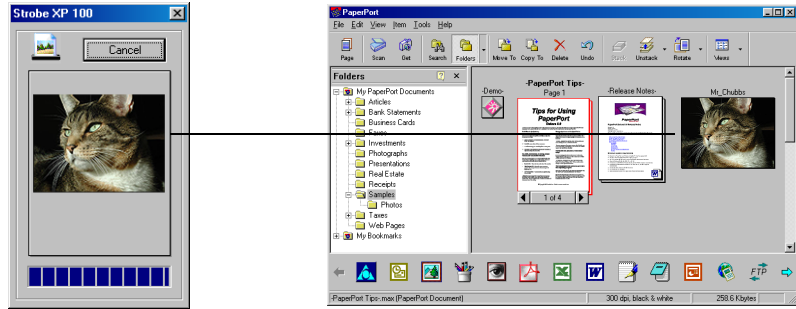


The scanner feeds the paper through while it scans.

The item is scanned with the settings—such as color for magazine articles, or black and white for pages that you want to fax—selected in the OneTouch configuration dialog box.

See “Selecting New Settings for the Button” on page 19 to select another configuration and other options for the scanner button.

A scan progress window opens and then a “thumbnail” of the scanned image appears in the destination software. In the following example, the destination software is the PaperPort desktop.



For Windows XP: only a progress bar appears during the scanning.

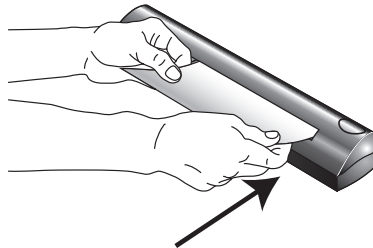
USE THE PHOTO SLEEVE TO SCAN A PHOTO

Photographs printed on glossy paper, or other coated paper, may slip when inserted into the scanner's paper feed. Use one of the photo sleeves that you received with your scanner when scanning photos.

1. Separate the clear plastic sleeve from the paper backing and slide the photo into the sleeve so it fits snugly at the corners.



2. Now insert the photo and sleeve into the scanner's paper feed slot with the clear plastic and image facing down.



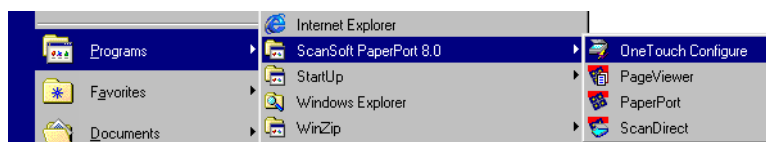
CONFIGURING THE SCANNER BUTTON

When you first connect your scanner to a computer, the scanner's software configures the scanner button to scan in black and white for a magazine article and send the scanned image to the PaperPort desktop. But, you can change the button's settings by selecting new options from the button's Configuration dialog box.

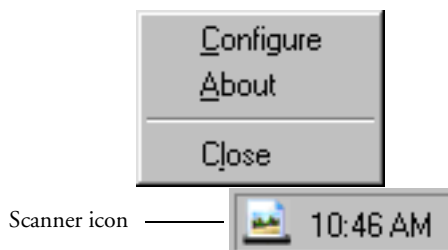
You display the Configuration dialog box from either the shortcut menu or the Windows Start menu.

To display the Configuration dialog box:

1. Choose **Programs** from the Windows **Start** menu and then **ScanSoft PaperPort 8.0** and **OneTouch Configure**.



You can also just right-click the scanner icon at the bottom right corner of the Windows desktop and then choose **Configure** from the shortcut menu that appears.



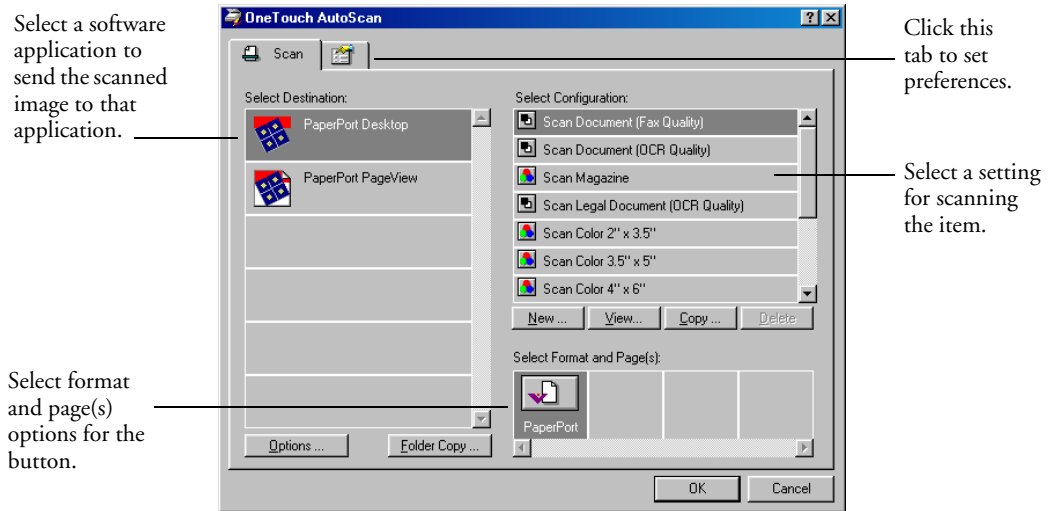
The Configuration dialog box appears.

2. Click the Scan tab on the Configuration dialog box if it is not already selected.

ABOUT THE CONFIGURATION DIALOG BOX

The Configuration dialog box shows the current settings for the scanner button.

For example, the following figure shows the settings pre-selected when you first receive your scanner. The Scan button is set up to scan the item with the configuration named Scan Document, and then after the scanning is finished, to open the PaperPort desktop to display the scanned image. The Format and Page(s) setting is to scan in the PaperPort image format.



The icons next to the Configuration indicate the type of scanning:



Color Black and White Grayscale

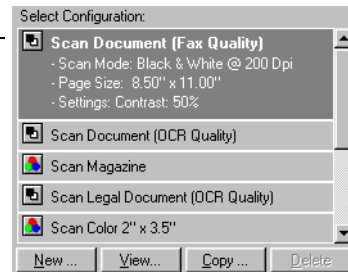
The options on the Configuration dialog box are:

Select Destination—the list of applications that can open to display the scanned image. Select the application that you want to automatically open to display or process the scanned image. The example above only shows PaperPort, but you can display a full list of other applications on

your computer that you can use with the scanner. To see the list, click the Preferences tab at the top of the dialog box. See “Setting Preferences” on page 24 for more information.

Select Configuration—the list of the button’s scan configurations. The configuration settings include: color, black and white, or grayscale, resolution in dots per inch (dpi), page size, contrast, and brightness. To see the a configuration’s settings, click its icon in the list. Click the icon again to close the detailed information.

Clicking an icon expands the configuration to show its settings.



You can also click the **View** button to see more detailed information about the selected configuration.

Select Format and Page(s)—a set of options for selecting a format for the scanned image. The formats are bitmap and PaperPort. Bitmaps are usually for photos or artwork. The bitmap format is available when you select a destination application other than PaperPort.



Options—displays a dialog box for selecting options about the destination application for the scanned image. Each destination application has its own options dialog box.

Folder Copy—displays a dialog box for selecting the folder to use for storing copies of the scanned images.

SELECTING NEW SETTINGS FOR THE BUTTON

You can select a new destination application, configuration, and image format for the scanner button to optimize it for the type of scanning you want to do.

To select new settings for the scanner button:

1. Scroll the list of applications in the Select Destination list and click the new application you want to use to view and work with the scanned image.

See “Setting Preferences” on page 24 to display a full list of the destination applications that you can use with the scanner.

Note: If you select a word processing program such as Microsoft WordPad or Microsoft Word and a configuration for OCR, the text in scanned images is automatically converted to word processing text by the optical character recognition (OCR) software that you receive with the scanner. The converted text then appears in the selected destination application.

2. Click a selection in the Select Configuration list to choose a new scan configuration for the scanner button.



To scan in color: select one of the configurations indicated by the small color icon, such as the Scan Magazine configuration.

The configurations are preset for the destination application you select in the Select Destination list. If you select another application, the configurations are for that application.

3. Select one of the Format and Page(s) options for the button.
4. Click **OK**.

Now when you press the scanner button, it scans the image using the new configuration settings and displays the scanned image in the new destination application.

CREATING NEW BUTTON CONFIGURATIONS

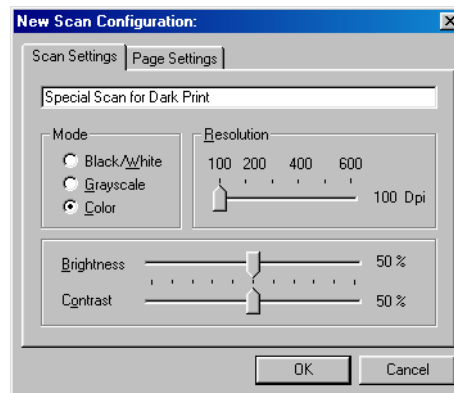
You cannot change settings such as brightness or contrast of the preset configurations. To scan with settings other than those offered by the preset configurations, you must first create a new configuration for the scanner button.

To create a new configuration:

1. Scroll the list of applications in the Select Destination list and click the application for which you want to create a new configuration.
2. Click the **New** button on the Configuration dialog box.

A dialog box appears for creating a new configuration.

3. Type a name, such as Special Scan for Dark Print.



Note: If you select a printer or other device in the Select Destinations list, the dialog box may have an additional tab for setting specific options or the particular device.

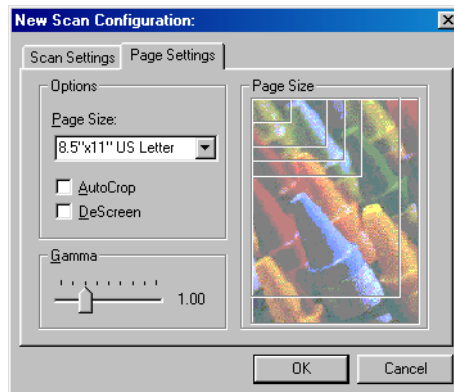
4. Select the scan settings that you want for the new configuration.
Mode—Select Black/White to scan in black and white. For example, letters and memos are usually scanned in black and white. Select Grayscale to scan items such as documents containing

drawings or black and white photographs. The scanning produces an image in varying shades of gray. Select Color to scan color photographs and other color items.

Resolution—Drag the slider to the right or left to adjust the dots per inch (dpi) of the resolution. The maximum resolution is 600 dpi; the minimum is 100 dpi. The higher the dpi setting, the sharper and clearer the scanned image. However, higher dpi settings take longer to scan and produce larger files for the scanned images.

Brightness and **Contrast**—Drag the sliders to the right or left to adjust the brightness and contrast of the scanned image. The Contrast setting does not apply to the Black/White mode.

5. Click the Page Settings tab to select the scan page settings.



Page Size—Choose a page size from the drop-down list. The outlines on the picture represent the various page sizes. Clicking one of those outlines also selects it as the page size for the scan. If you select the **Custom** option from the drop-down list, boxes appear in place of the picture. Enter the horizontal and vertical page dimensions in the boxes.

AutoCrop—This option lets the scanner automatically determine the size of the item being scanned. For example, if you scan an unusual page size, the scanner will automatically determine the size of the page. This option overrides the Page Size menu selection.

DeScreen—Select this option when scanning a picture from a newspaper or magazine article, or other items that contains images with patterns or dots. Scans of patterns or dots sometimes have a distorted or wavy appearance. The scanner scans the item to compensate for the patterns and dots, and produces a clearer image. The following example shows the effect of descreening a scanned image from a magazine article.

Original Image



Descreened Image



The scanning may slow down a bit when descreen is selected. You don't need to select this option when scanning photographs. The DeScreen setting does not apply to the Black/White mode.

Gamma—The gamma setting adjusts the range of midtone colors on an image. By changing the gamma you can adjust midtone levels without losing details from the lightest or darkest areas. You use the gamma correction to achieve precise color matching of the original image and how it looks on your computer monitor. Because the computer cannot always transmit the exact color information to the hardware, you may have to make some color adjustments using the gamma feature.

In most cases, however, the default gamma setting works fine and normally does not need to be adjusted.

6. Click **OK**.

The Configuration dialog box reappears. Now you can select your new configuration for the scanner button.

7. Select your new configuration in the Configuration list.
8. Click **OK** on the Configuration dialog box.

The new configuration and its settings now apply to the button.

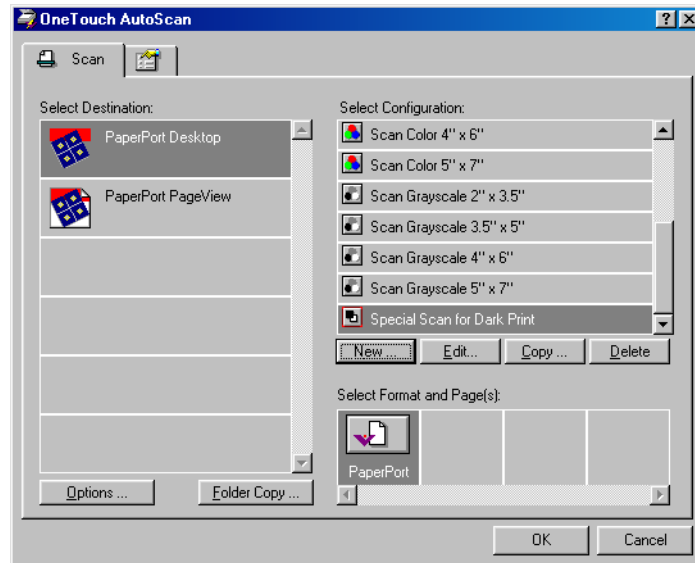
EDITING YOUR SCANNER'S BUTTON CONFIGURATIONS

You cannot edit the preset configurations; you can only edit the scanner button configurations that you created yourself.

To edit a configuration:

1. Display the Configuration dialog box.
2. Select the configuration that you want to edit. It must be one of the configurations you created. You cannot edit the preset button configurations.

This example shows a configuration that you would have created earlier named Special Scan for Dark Print.



3. Click the **Edit** button.

The dialog box with the Scan Settings and Page Settings appears.

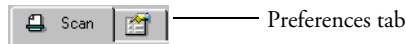
4. Edit the settings that you want and click **OK**.

SETTING PREFERENCES

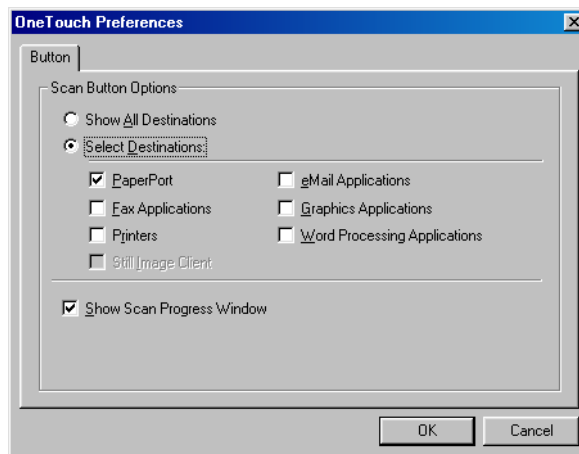
The preferences remain the same for each configuration that you select for the scanner button.

To set preferences:

1. Click the Preferences tab on the Configuration dialog box.



The Preferences dialog box appears.



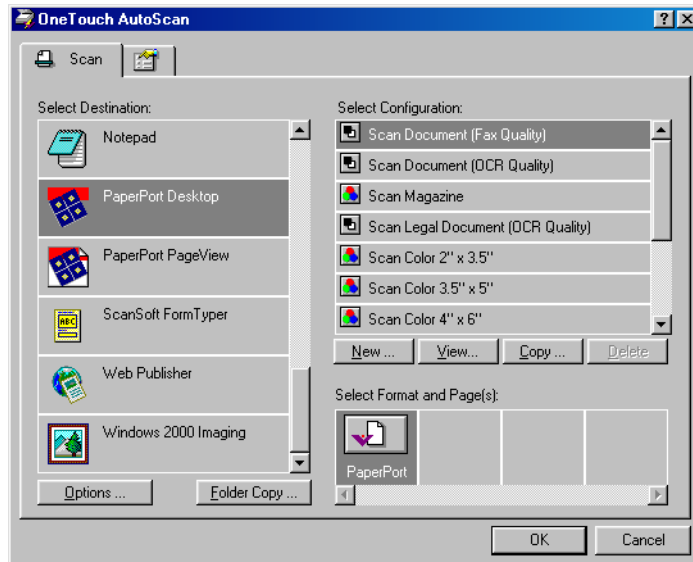
2. Select the preferences for the OneTouch software.

Show All Destinations—Clicking this option automatically selects all the destination applications categories. The list of destination applications on the Configuration dialog box will include all the applications on your computer that fall into these categories.

Select Destinations—Select this option to individually choose the types of applications to include in the list of destination applications. Click in the boxes for the types of applications to include.

Show Scan Progress Window—Select this option to see the window that shows a rendition of the image during the scanning.

Here is a sample of the Configuration dialog box with the Show All Destinations option selected. As you can see, the Select Destination list now includes a complete list of applications on your computer that can receive your scanned images.



The list will also include printers and other devices connected to your computer so, for example, you can scan an item and print it right away.

3. Click **OK**.

SCANNING FROM THE PAPERPORT SOFTWARE

Instead of using the scanner button, you can scan directly from the PaperPort software. This is particularly helpful when you're using PaperPort to file and save your scanned items.

A Note About Your Scanner and the Twain standard: If your computer is running Windows 98, Me, or 2000, your scanner can use the Twain standard for scanning. Twain is a widely recognized procedure that computers use to receive images from scanners, digital cameras, and other digital devices. The PaperPort software application that you received with your scanner uses the Twain standard, and this *Installation Guide* shows how to scan with it. Many other graphics and imaging applications also comply with the Twain standard, so you can use your scanner with those applications too. To use your scanner with other Twain software, please see their user guides.

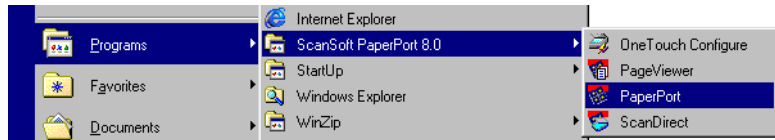
If your computer is running Windows XP: instead of using the Twain standard, your scanner uses Microsoft's Windows Image Application standard for scanning, which is also available from other applications. Therefore, you can use your scanner with other applications on a computer running Windows XP too. See "Scanning from a Computer Running Windows XP" on page 33.

SCANNING FROM A COMPUTER RUNNING WINDOWS 98, ME, OR 2000

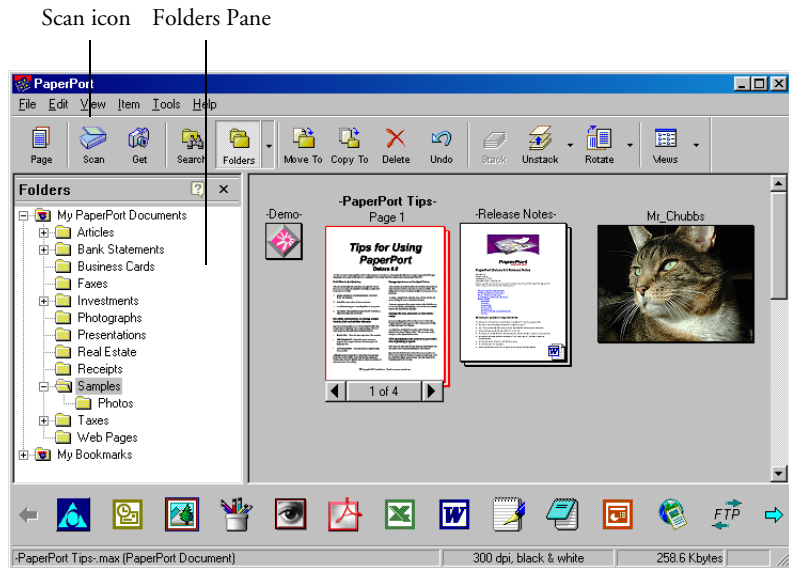
The instructions in this section are for computers running Windows 98, Me, or 2000. If your computer is running Windows XP, see “Scanning from a Computer Running Windows XP” on page 33.

To scan an item from PaperPort:

1. If the PaperPort software isn't currently running, click the Windows **Start** button and from the **Programs** menu, choose **ScanSoft PaperPort 8.0** and then choose the **PaperPort** program.

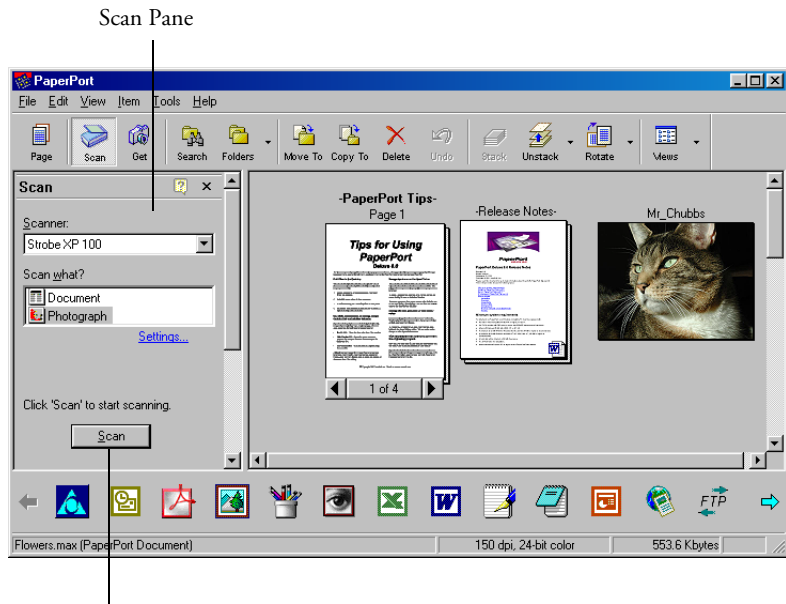


The PaperPort desktop appears.



2. Click the **Scan** icon on the PaperPort command bar.

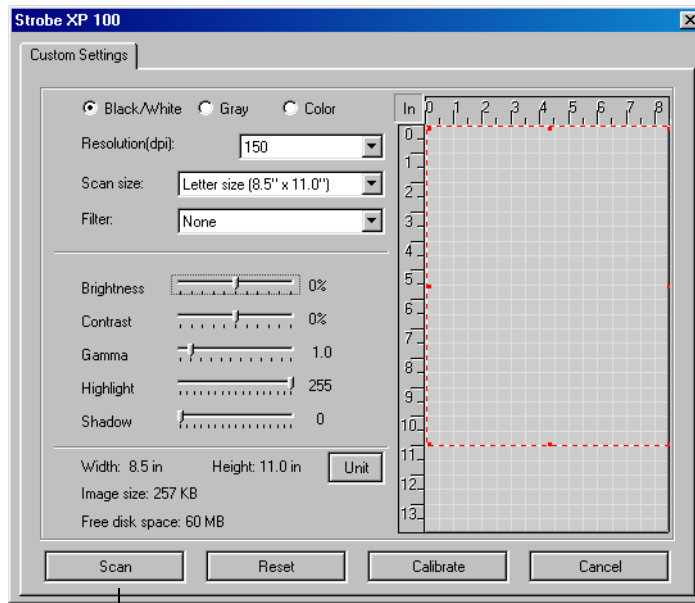
The Folders pane (which shows folders for organizing your scanned images) is replaced by the Scan pane. You use the Scan pane for scanning.



Click this Scan button to display the Scan Window

3. From the Scanner drop-down list, select your **Strobe XP 100** scanner.
4. In the “Scan what?” section, choose to scan a **Document** or **Photograph**.
5. Click **Settings** to choose the format for the scanned item’s file name, and the type of file. A dialog box appears to choose those settings.
6. Click the **Scan** button at the bottom of the Scan pane.

The Strobe XP 100 Scan window opens. You use the Scan window to select scanning options and to start the scanner.



You click **Scan** here when you're ready to scan instead of pressing the button on the scanner.

7. Select the options for the item you're scanning.

The options for scanning are:

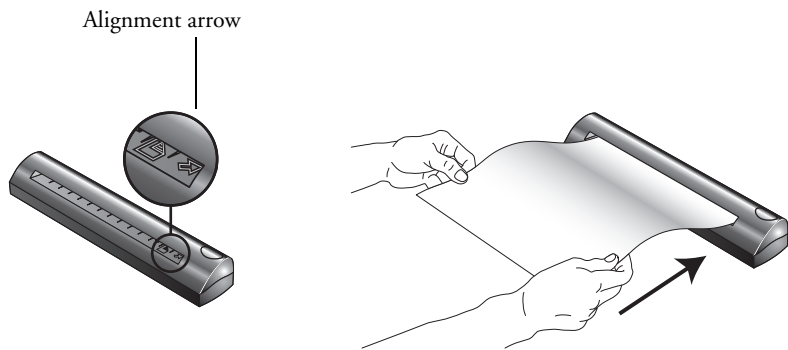
- **Black and White**—scans in black and white. The scanning pixels are all the same size and are either black or white. Use this setting for letters, memos, pen and ink drawings, and other black and white material. This setting produces the smallest file size for scanned items.
- **Gray**—scans the image using up to 256 true shades of gray. Use this setting to scan black and white photographs and other higher quality black and white images. You can also scan a color photo with this setting to turn its colors into gray shades. The file size is about one third the size of a color scan.

- **Color**—scans the image in full color. Use this setting to scan color photographs and other color images. The file size is the largest of the color mode options.

Note: You can see the file size at the bottom of the Scan window.

- **Resolution (dpi)**—determines the amount of detail you can see in the scanned image. The resolution setting for a scan is in dots-per-inch (dpi). The higher the resolution, the finer the details, however, higher dpi settings also take longer to scan and produce larger files sizes. Usually the higher resolution settings are used for precision work, such as photographs or fine artwork.
- **Scan Size**—selects the size of the item you're scanning. Choose a scan size from the drop-down list. The dotted red outline on the picture area represents the scan size. You can drag the edges and corners of the red selection box to fit the image.
- **Filter**—the descreen filter removes the patterns or dots that sometimes give a distorted or wavy appearance to pictures from magazines or newspapers. See page 22 for an example.
- **Brightness**—the lightness or darkness of the image. Drag the slider to make the image lighter or darker.
- **Contrast**—the difference between the lighter and darker shades in the images. Drag the slider to increase or decrease the contrast.
- **Gamma**—the range of midtone colors on an image. By changing the gamma you can adjust midtone levels without losing details from the lightest or darkest areas.
- **Highlight/Shadow**—Images have light and dark areas. The highlight is the lightest spot on an image; shadow is the darkest spot. The range of colors between the highlight and shadow determines the range of colors of the image. Using the Highlight/Shadow sliders, however, you can extend the original range of colors between the highlight and shadow to reveal more details in the midrange colors.
- **Unit**—toggles the units on the ruler around the preview picture from inches to centimeters.

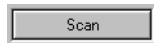
- **Reset**—returns all the settings on the Scan window to their original values.
 - **Calibrate**—displays the dialog box for recalibrating the scanner.
 - **Scan**—starts the scanner.
 - **Cancel**—closes the Scan window without scanning.
8. When you're ready to scan, insert the item, face down, into the scanner's Paper Feed until the scanner grabs it. Align the item with the alignment arrow.



The scanner grabs the top edge of the paper.

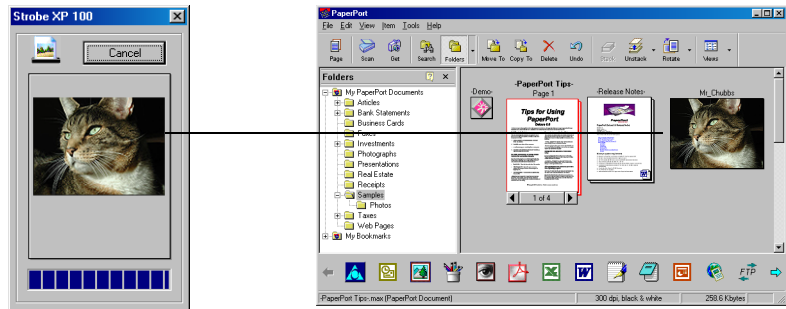
Don't press the button on the scanner. The scanner will scan, but it will use the settings from the OneTouch software instead of the PaperPort software.

9. To scan with the settings you've just selected from the PaperPort software, click **Scan** on the Scan window.



The scanner starts scanning and a progress box shows the image as it is being scanned.

A thumbnail image of the scanned item appears on the PaperPort desktop.



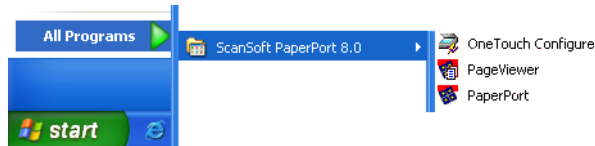
You can now use the features of the PaperPort software to work with the scanned image. See the *PaperPort User's Guide* on the CD that you received with the scanner.

SCANNING FROM A COMPUTER RUNNING WINDOWS XP

The instructions in this section are for computers running Windows XP. If your computer is running another version of Windows, see “Scanning from a Computer Running Windows 98, Me, or 2000” on page 27.

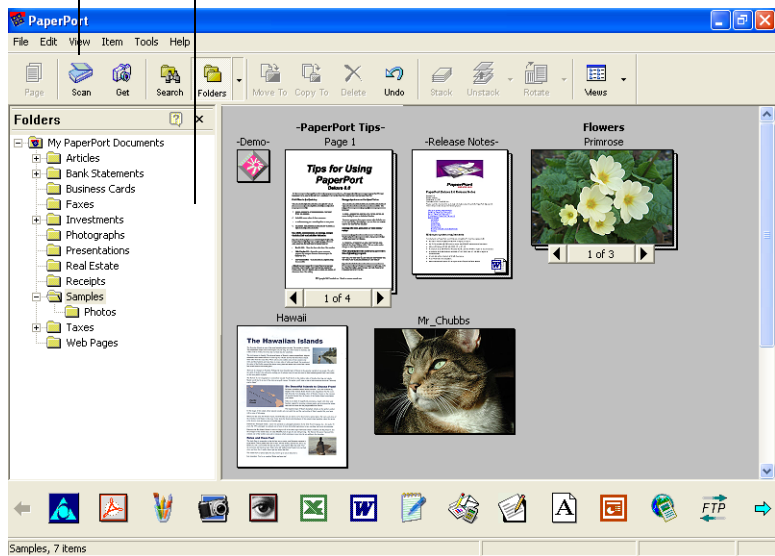
To scan an item:

1. If the PaperPort software isn't currently running, click the Windows **Start** button and from the **All Programs** menu, choose the **ScanSoft PaperPort 8.0** program and then choose **PaperPort**.



The PaperPort desktop appears.

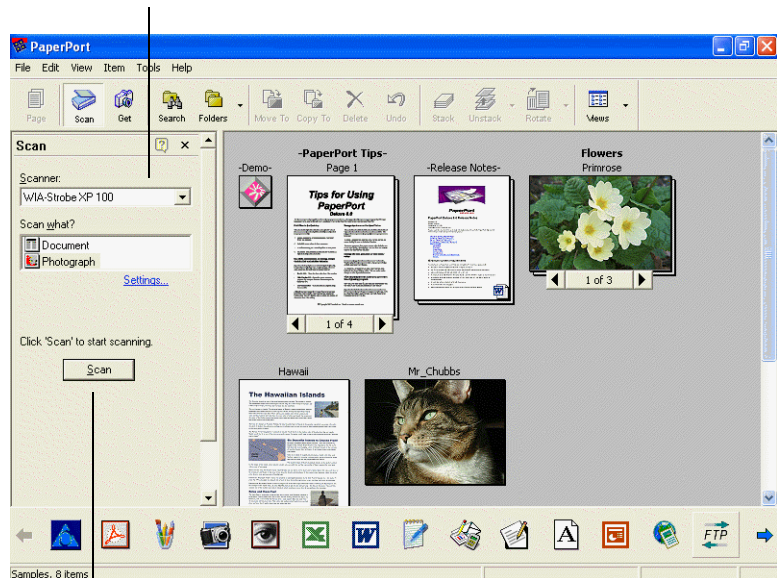
Scan icon Folders Pane



2. Click the **Scan** icon on the PaperPort command bar.

The Folders pane (which shows folders for organizing your scanned images) is replaced by the Scan pane. You use the Scan pane for scanning.

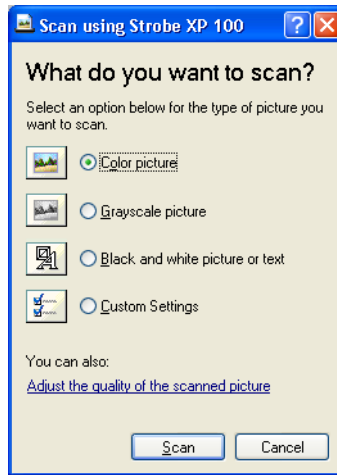
Scan Pane



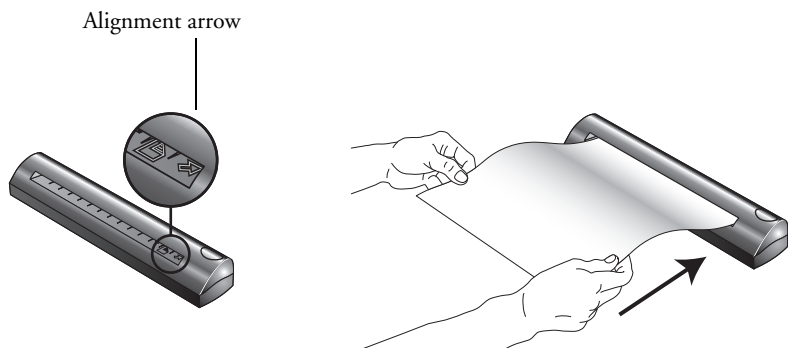
Click this Scan button to display the Scan Window

3. From the Scanner drop-down list, select your **WIA Strobe XP 100** scanner.
4. In the “Scan what?” section, choose to scan a **Document** or **Photograph**.
5. Click **Settings** to choose the format for the scanned item’s file name, and the type of file. A dialog box appears to choose those settings.
6. Click the **Scan** button at the bottom of the Scan pane.

The Strobe XP 100 Scan window opens. You use this Scan window to select scanning options and to start the scanner.



7. Click the button most appropriate for the item you're scanning.
To scan with the Custom Settings button see the next section, "Fine Tuning Your Scans".
8. When you're ready to scan, insert the item, face down, into the scanner's Paper Feed until the scanner grabs it. Align the item with the alignment arrow.



The scanner grabs the top edge of the paper.

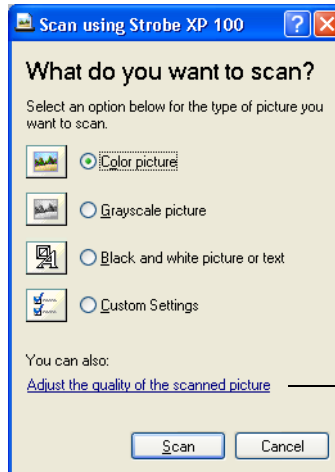
9. Now click the **Scan** button. The scanner starts scanning and a thumbnail of the image appears on the PaperPort desktop.

FINE TUNING YOUR SCANS

You can select new settings before you scan an item to fine tune exactly how you want to scan a particular item.

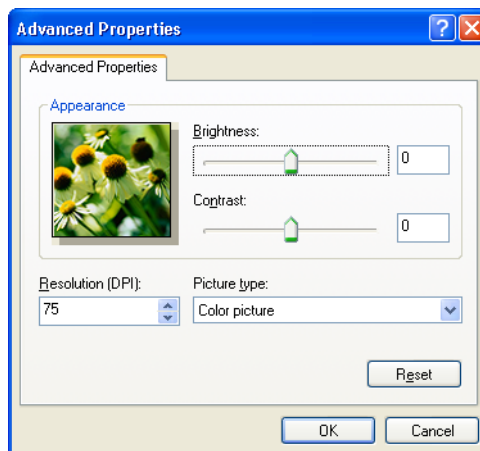
To select the scanner settings before you scan:

1. On the Strobe XP 100 Scan window, click the text **Adjust the quality of the scanned picture.**



Click this text to fine tune your scans

The Advanced Properties dialog box appears.



2. Select the options for scanning.

Brightness and **Contrast**—Drag the sliders to the right or left to adjust the brightness and contrast of the scanned image. The Contrast setting does not apply to the setting **Black and White picture or text**.

Resolution (DPI)—Click the drop-down list and choose the dots per inch (dpi) of the resolution. The maximum resolution is 600 dpi; the minimum is 100 dpi. The higher the dpi setting, the sharper and clearer the scanned image. However, higher dpi settings take longer to scan and produce larger files for the scanned images.

Picture type—Click the drop-down menu and choose the most appropriate type for the item you're scanning.

3. Click **OK**.

The Custom Settings button is now set to scan with the options you selected.

If you want to reset the settings and start over, click **Reset**.

Now when you click the Scan button on the Strobe XP 100 Scan window the scanner starts scanning using your new settings.

CALIBRATING AND CLEANING YOUR SCANNER

You calibrated your scanner when first installing it, but after many hours of use you may find that scanned images may not be as sharp and clear as when you originally began using the scanner. In that case, recalibration may solve the problem.

If your scanned images have streaks, smudges, or dirt spots, you may need to use the Cleaning Paper that you received with the scanner.

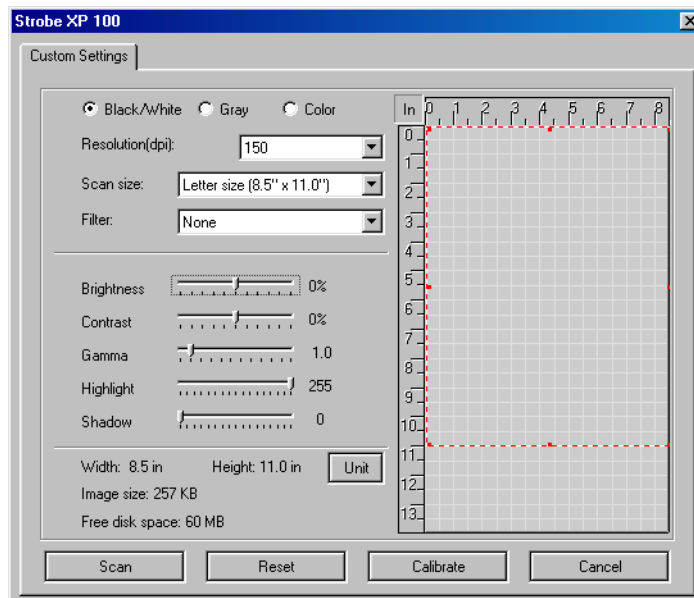
The process to calibrate and clean your scanner is slightly different for Windows XP than for Windows 98, 2000, and Me. Please make sure to use the correct process below.

To recalibrate or clean your scanner for Windows 98, 2000, or Me:

1. Start the PaperPort software.
2. Click the **Scan** icon on the PaperPort command bar.
3. Click the **Scan** button on the PaperPort Scan pane.

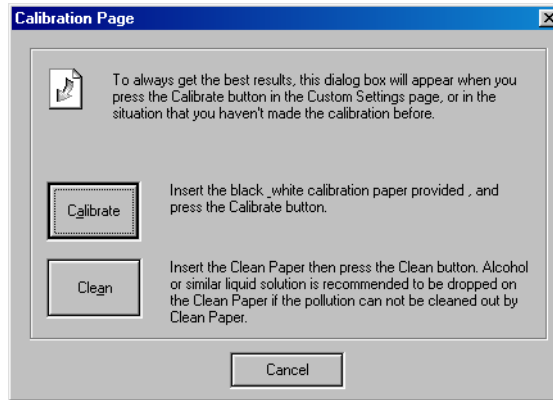


The Strobe XP 100 Scan window opens.



4. Click the **Calibrate** button.

The Calibrate Page window opens.



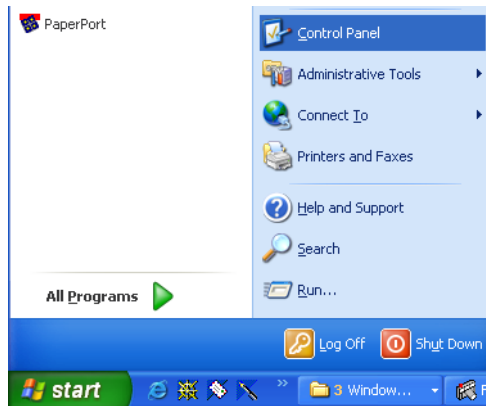
5. Follow the instructions on the window and then click the appropriate button.

Remember to store the Calibration Paper and the Cleaning Paper in their plastic bags for future use.

Do not discard the Cleaning Paper. It can be reused several times if necessary.

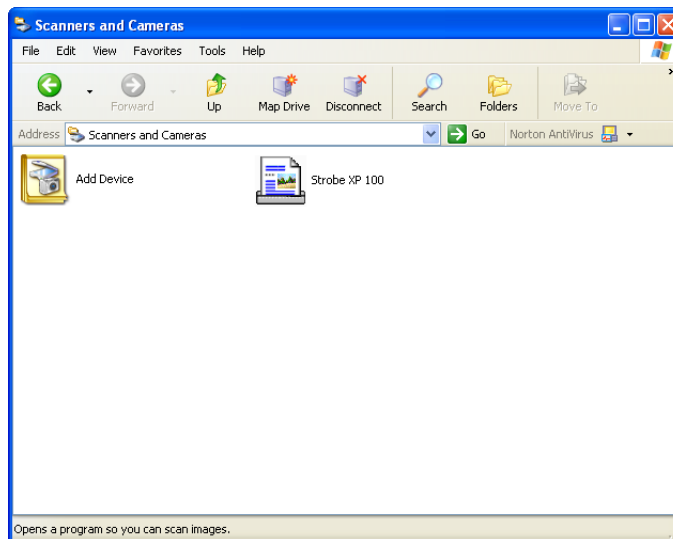
To recalibrate or clean your scanner for Windows XP:

1. Click the Windows **Start** button and choose **Control Panel**.



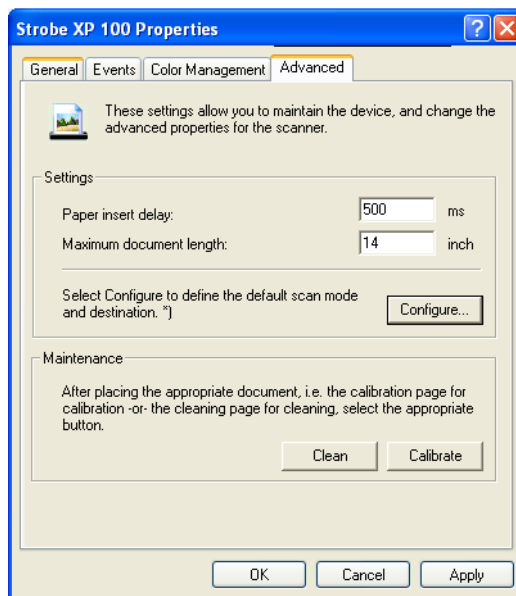
The Control Panel window appears.

2. Choose **Scanners and Cameras**.
3. In the Scanners and Cameras window double-click the **Strobe XP 100** icon.



The Control Panel for the Strobe XP 100 appears.

4. Click the **Advanced** tab.



5. To recalibrate the scanner, insert a Calibration Paper into the scanner, then click the **Calibrate** button.

To clean the scanner, insert the Cleaning Paper into the scanner, then click the **Clean** button.

If additional cleaning is necessary, add a few drops of alcohol or similar liquid solution to the Cleaning Paper and clean the scanner again.

Remember to store the Calibration Paper and the Cleaning Paper in their plastic bags for future use.

Do not discard the Cleaning Paper. It can be reused several times if necessary.

TROUBLESHOOTING

In addition to the troubleshooting information contained in this section, please see the Readme file in the PaperPort directory on your computer's hard drive. The Readme file contains additional information that may help you diagnose problems with the scanner.

Online help information is also available. Press **F1** on the keyboard to see the help.

If you try all the troubleshooting procedures described in this section and in the Readme file, and the scanner still has problems, you may have a malfunctioning scanner. Please see the technical support card that you received with your scanner for technical assistance telephone numbers. Also visit our web site at www.visioneer.com for additional technical information.

Problem: The scanner won't scan. What's wrong?

Check for one of these possible problems:

- **Is the cable loose or not plugged in securely?** Inspect the cable connections. Make sure the cable is plugged in securely.
- **Did you restart the computer after installing the software?** If you didn't restart the computer, it may not have loaded all of the software files. Try restarting your computer.
- **Did you plug the scanner into a USB hub?** If you're using a USB hub to connect the scanner, the hub must have its own power supply. If the hub does not have its own power supply, plug the scanner into a different USB port on the computer.
- **Did you select another scanning source in the PaperPort Scan Pane?** If you use multiple devices with your computer, you may have selected another source for images. Start the PaperPort software and click the **Scan** icon and then make sure **Strobe XP 100** is selected as the scanner.

Problem: I scanned an item from PaperPort and then, to scan the next item, I decided to press the scanner's button. But now the scanner won't scan. What's wrong?

You have to close PaperPort first. Then the scanner button will start the scanning. This occurs because you already scanned from PaperPort and the scanner expects you to scan from there and not from the scanner button.

Problem: During installation I got the error message: PaperPort Installation is not complete. What do I do?

The installation procedure was not successful. You need to reinstall the PaperPort software.

Problem: I got the error message: PaperPort cannot allocate enough memory to perform internal critical operations. What do I do?

Close any other active applications so that additional memory is available. If you click Continue, PaperPort moves the file to the PaperPort data directory and renames the file with the prefix "bad." This allows you to recover the file later.

To recover the file, you can import it into PaperPort by using the Import command in the File menu.

Problem: How do I uninstall PaperPort?

See the next section. Uninstalling does not delete your scanned items, and they remain in the PaperPort Data folder.

HOW TO UNINSTALL YOUR SCANNER

To uninstall the Visioneer Strobe XP 100 scanner, you remove the scanner software first, and then remove the PaperPort software, or other software you installed for the scanner.

STEP 1: UNINSTALLING THE VISIONEER ONE TOUCH SOFTWARE

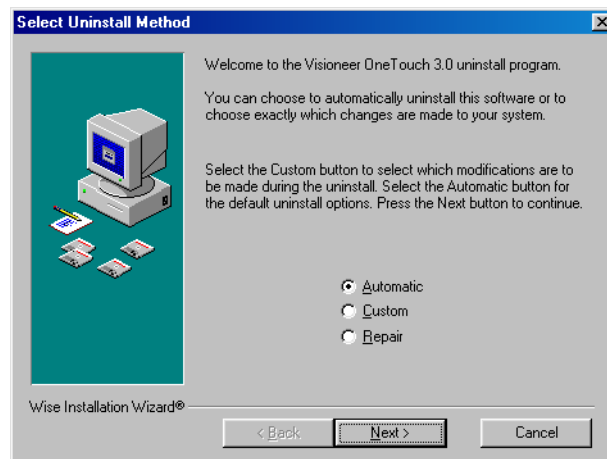
FOR WINDOWS 98, 98 SE, AND ME:

1. Click **Start** on the Windows taskbar.
2. Choose **Settings** then **Control Panel** from the menu.
3. Double-click the **Add/Remove Programs** icon.

The Add/Remove Programs Properties window opens. Make sure the Install/Uninstall tab is selected.

4. Scroll the menu of software and select **OneTouch Version 3.0**.
5. Click the **Add/Remove** button.

The Select Uninstall Method window opens.



6. Make sure the **Automatic** option is selected.

Important: The Automatic option is selected by default. Visioneer recommends using the Automatic option. The other options are for advanced users only.

7. Click **Next**.

The Perform Uninstall window opens.

8. Click **Finish**.

The Visioneer OneTouch software is uninstalled from your computer. The status light on the scanner turns amber indicating that the scanner and computer are no longer communicating.

9. If the Remove Shared Components window opens, Visioneer recommends selecting **No to All**.
10. Unplug the USB cable from your computer and scanner.
11. Close the Add/Remove Program Properties window and the Control Panel window.
12. Restart your computer.

FOR WINDOWS 2000 AND XP:

1. Click **Start** on the Windows taskbar.
2. For Windows 2000 choose **Settings** then **Control Panel** from the menu.

For Windows XP, choose **Control Panel** from the menu.

3. Double-click the **Add/Remove Programs** icon.

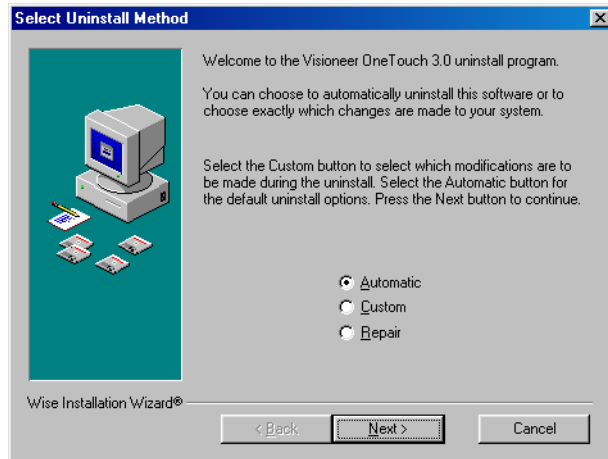
The window that opens is named Add/Remove Programs (Windows 2000) or Add and Remove Programs (Windows XP).

4. In the left column of the window, make sure the **Change or Remove Programs** option is selected.
5. Select the icon for **OneTouch Version 3.0**.

6. Click the **Change/Remove** button.

If two buttons appear instead of a single Change/Remove button, click **Remove**.

The Select Uninstall Method Window opens.



7. Make sure the **Automatic** option is selected.

Important: The Automatic option is selected by default. Visioneer recommends using that option. The other options are for advanced users only.

8. Click **Next**. The Perform Uninstall window opens.
9. Click **Finish**.

The Visioneer OneTouch software is uninstalled from your computer. The status light on the scanner turns amber indicating that the scanner and computer are no longer communicating.

10. Unplug the USB cable from your computer and scanner.
11. Close the Add or Remove Programs window and the Control Panel window.
12. Restart your computer.

STEP 2: UNINSTALLING THE PAPERPORT SOFTWARE

1. Click **Start** on the Windows taskbar.
2. Choose **Settings** then **Control Panel** from the menu.
3. Double-click the **Add/Remove Programs** icon.

Windows 98, 98SE, or ME: The Add/Remove Programs Properties window opens. Make sure the Install/Uninstall tab is selected.

Windows 2000 or XP: The Add or Remove Programs window opens. Make sure the Change or Remove option is selected in the left column.
4. Scroll the menu of software and select **PaperPort 8.0**.
5. For Windows 98, 98SE, or ME: Click the **Add/Remove** button.

For Windows 2000 or XP: Click the **Change/Remove** button.

The PaperPort Uninstall window opens.
6. Carefully read the Warning information. Click **Next**.
7. If the Remove Shared Files window opens, select **No to All**.

Important: Visioneer recommends choosing No to All. Removing shared files could cause other applications not to run correctly.

The PaperPort software is removed. A message appears offering to keep or remove your scanned image files currently stored on the computer.

8. Click the **No** to keep your image files, click **Yes** to remove the image files from your computer permanently.

Important: Files created by PaperPort are in a proprietary format (with a .max extension) and cannot be opened by other applications. If you decide to keep your scanned image files and want to be able to view them, you can use the PaperPort Viewer instead of the PaperPort application. Download the viewer from Visioneer's Web site at www.visioneer.com

You may see a note about missing software. Click **OK**.

9. For Windows XP: Click **Finish**.
10. Close the Remove Programs From Your Computer window. Close the Control Panel.
11. Restart your computer.

CONTACTING VISIONEER US AND CANADA TECHNICAL SUPPORT

Please see the chart below for contact telephone numbers.

Free Support on the Web	www.visioneer.com
Support by Fax	(541) 884-8474
Support by Telephone (8:00 am - 5:00 pm Pacific Time, Monday-Friday) Long distance charges may apply	(541) 884-5548
Express Telephone Support (8:00 am - 5:00 pm Pacific Time, Monday-Friday)	(900) 776-5724 (Nominal per-minute fee)

CONTACTING VISIONEER — INTERNATIONAL TECHNICAL SUPPORT

Visioneer provides technical support to all registered users in English and German. Please see the chart below for contact telephone numbers.

For Latin America, call our U.S. Technical Support (1-541-884-5548).

Visioneer bietet allen registrierten Benutzern technische Unterstützung auf Deutsch und Englisch. Die Kontakttelefonnummern können Sie der folgenden Tabelle entnehmen.

Usuarios en Latinoamérica, sírvanse llamar al teléfono de apoyo técnico en los (1-541-884-5548).

Country		Telephone
Monday - Friday		
UK		0870 161 3003
Germany		0180 5 103 003
Rest of Europe		49 1805 440466
Visit www.visioneer-europe.com for more information		

Important: Information about contacting Visioneer is subject to change. Please visit our Web site at www.visioneer.com for the latest details.

VISIONEER STROBE XP 100 SCANNER SPECIFICATIONS

Optical resolution	600 dpi
Bit Depth	36-Bit color (internal, 12-bit a/d converter recognition, over 68 billion colors) 12-Bit gray (internal, 4096 shades of gray)
Output Bit Depth	24-bit color, 8-bit grayscale, 1-bit black and white
Scan Method	Fast Sheet fed
Interface	USB
Scanner dimensions	
Height	1.5 inches (3.81 cm)
Width	2.0 inches (5.08 cm)
Length	11.4 inches (28.96 cm)
Weight	11.2 ounces (0.350 kg)
Operating temperature	50°–104° F (5°–35° C without condensation)
Relative humidity	20%–80% (@35° C without condensation)
Safety and agency certifications	UL, FCC Class B, VCCI Class B, CE
Hardware warranty	One-year limited warranty