

visioneer®

7900
User Guide

USER GUIDE

Visioneer® 7900

Copyright Information

© 2024 Visioneer, Inc. All rights reserved. Visioneer is a registered trademark of Visioneer, Inc.

Changes are periodically made to this document. Changes, technical inaccuracies, and typographic errors will be corrected in subsequent editions. Information is subject to change without notice and does not represent a commitment on the part of Visioneer.

Document Version: 05-1045-000 (February 2024)

This product is covered by one or more of the following patents: 6,064,778, 6,480,304, 7,715,061, 10/838,364, 7,397,587.WO 02/25571, 7,617,985, 11/140,653, 10/787,912

Reproduction, adaptation, or translation without prior written permission is prohibited, except as allowed under the copyright laws. Copyright protection claimed includes all forms of matters of copyrightable materials and information now allowed by statutory or judicial law or hereinafter granted, including without limitation, material generated from the software programs which are displayed on the screen such as styles, templates, icons, screen displays, looks, etc.

The software described is furnished under a licensing agreement. The software may be used or copied only in accordance with the terms of such an agreement. It is against the law to copy the software on any medium except as specifically allowed in the licensing agreement. No part of this document may be reproduced or transmitted in any form or by any means, electronic or mechanical, including photocopying, recording, or information storage and retrieval systems, or translated to another language, for any purpose other than the licensee's personal use and as specifically allowed in the licensing agreement, without the express written permission of Visioneer.

Adobe®, Adobe® Acrobat®, Adobe® Reader®, and the Adobe® PDF logo are registered trademarks of Adobe Systems Incorporated in the United States and/or other countries.

Post-It® is a registered trademark of 3M in the United States and/or other countries.

Microsoft is a U.S. registered trademark of Microsoft Corporation. Windows™ is a trademark and SharePoint® is a registered trademark of Microsoft Corporation.

Kensington® is a registered trademark of ACCO Brands Corporation.

ZyINDEX is a registered trademark of ZyLAB International, Inc. ZyINDEX toolkit portions, Copyright © 1990-1998, ZyLAB International, Inc.

All other products mentioned herein may be trademarks of their respective companies and are hereby acknowledged.

Visioneer's Limited Product Warranty

Please go to www.visioneer.com, select your product, and then click the "Warranty Program" link to view the warranty terms and conditions for your scanner.

Restricted Rights Legend

Use, duplication, or disclosure is subject to restrictions as set forth in contract subdivision (c)(1)(ii) of the Rights in Technical Data and Computer Software Clause 52.227-FAR14. Material scanned by this product may be protected by governmental laws and other regulations, such as copyright laws. The customer is solely responsible for complying with all such laws and regulations.

RoHS and WEEE Compliance

This product is compliant with RoHS Regulations of the European Parliament and Council Directive on the Restrictions of the Use of Certain Hazardous Substances in Electrical and Electronic Equipment (2002/95/EC), and with the Waste Electrical and Electronic Equipment (WEEE) Directive (2002/96/EC).

United States (FCC Regulations)



This equipment has been tested and found to comply with the limits for a Class B digital device, pursuant to Part 15 of the FCC Rules. These limits are designed to provide reasonable protection against harmful interference in a residential installation. This equipment generates, uses, and can radiate radio frequency energy and, if not installed and used in accordance with the instruction manual, may cause harmful interference to radio communications.

However, there is no guarantee that interference will not occur in a particular installation. If this equipment does cause harmful interference to radio or television reception, which can be determined by turning the equipment off and on, the user is encouraged to try to correct the interference by one or more of the following measures:

- Reorient or relocate the receiving antenna.
- Increase the separation between the equipment and receiver.
- Connect the equipment into an outlet on a circuit different from that to which the receiver is connected.
- Consult the dealer or an experienced radio/TV technician for help.

This device complies with Part 15 of the FCC Rules. Operation is subject to the following two conditions: (1) This device may not cause harmful interference, and (2) this device must accept any interference received, including interference that may cause undesired operation.

Changes and modifications to this equipment not specifically approved by Visioneer may void the user's authority to operate this equipment.

Shielded cables must be used with this equipment to maintain compliance with FCC regulations.

ENERGY STAR for the USA

Energy Program compliance

As an ENERGY STAR® partner, Visioneer Inc. has determined that this product meets the ENERGY STAR guidelines for Imaging Equipment.



ENERGY STAR and the ENERGY STAR mark are registered trademarks owned by the U.S. Environmental Protection Agency. The ENERGY STAR Imaging Equipment Program is a team effort between the U.S., European Union and Japanese governments and the office equipment industry to promote energy-efficient copiers, printers, fax, multifunction machine, personal computers, and monitors. Reducing product energy consumption helps combat smog, acid rain and long-term changes to the climate by decreasing the emissions that result from generating electricity.

Visual Display

WARNING: This device is not intended for use in the direct field of view at visual display workplaces. To avoid incommoding reflections at visual display workplaces, this device must not be placed in the direct field of view.

Class 1 LED

This machine is certified as Class 1 LED product. This means that this machine does not produce hazardous laser radiation.

Product Recycling & Disposal

If you are managing the disposal of your Visioneer® product, please note that the product may contain lead, mercury, Perchlorate, and other materials whose disposal may be regulated due to environmental considerations. The presence of these materials is fully consistent with global regulations applicable at the time that the product was placed on the market. For recycling and disposal information, contact your local authorities. In the United States, you may also refer to the Electronic Industries Alliance web site: <http://www.eiae.org>.

Perchlorate Material - This product may contain one or more Perchlorate-containing devices, such as batteries. Special handling may apply, please see: <https://dtsc.ca.gov/perchlorate/>.

Safety

Notices and Safety

Please read the following instructions carefully before operating the machine and refer to them as needed to ensure the continued safe operation of your machine.

Your Visioneer® product and supplies have been designed and tested to meet strict safety requirements. These include safety agency evaluation and certification, and compliance with electromagnetic regulations and established environmental standards.

WARNING: The safety and environment testing and performance of this product have been verified using Visioneer® materials only. Unauthorized alterations, which may include the addition of new functions or connection of external devices, may impact the product certification. Please contact your Visioneer representative for more information.

Operational Safety Information

Your Visioneer® equipment and supplies have been designed and tested to meet strict safety requirements. These include safety agency examination, approval, and compliance with established environmental standards.

To ensure the continued safe operation of your Visioneer® equipment, follow these safety guidelines at all times:

Do these:

- Always follow all warnings and instructions that are marked on or supplied with the equipment.
- Always use materials specifically designated for this product, the use of other materials may result in poor performance and create a hazardous situation. Do not use aerosol cleaners, they may be explosive and flammable under certain conditions.
- Always exercise care when moving or relocating equipment.
- Always locate the machine on a solid support surface that has adequate strength to support the weight of the machine.
- Always locate the machine in an area that has adequate ventilation and room for servicing.
- Always unplug this equipment from the electrical outlet before cleaning.

Do not do these:

- Never attempt any maintenance function that is not specifically described in this documentation.
- Never remove covers or guards that are fastened with screws. There are no operator serviceable areas within these covers.
- Never locate the machine near a radiator or any other heat source.
- Never override or “cheat” any of the electrical or mechanical interlock devices.
- Always unplug this equipment from the electrical outlet before cleaning.

Emergency Power Off

If any of the following conditions occur, turn off the scanner immediately and disconnect the power cable(s) from the electrical outlet(s).

- The equipment emits unusual odors or makes unusual noises.
- The power cable is damaged or frayed.
- A wall panel circuit breaker, fuse, or other safety device has been tripped.
- Liquid is spilled into the machine.
- The machine is exposed to water.

- Any part of the machine is damaged.

Maintenance Information

- Any operator product maintenance procedures will be described in the user documentation supplied with the product.
- Do not carry out any maintenance on this product which is not described in the customer documentation.
- Do not use aerosol cleaners. The use of cleaners that are not approved may cause poor performance of the equipment, and could cause a dangerous condition.
- Use supplies and cleaning materials only as directed in this manual.
- Do not remove covers or guards that are fastened with screws. There are no parts behind these covers that you can maintain or service.
- Do not perform any maintenance procedures unless you have been trained to do them by an authorized local dealer or unless a procedure is specifically described in the user manuals.
- Never place this equipment where people might step on or trip on the power cord.

CONTENTS

- Welcome 3**
- What's in the Box 3
- System Requirements 3
- Documentation 4
- The Visioneer® 7900 Features 5

- Setup 7**
- Unpacking the Visioneer® 7900 7
- Connect the Power Cord 8
- Connect the USB Cable 8

- Installation 11**
- Windows Installation 11
 - Windows USB Driver Installation 11
- Installing Additional Applications 14
- View the User Guides 15
- Register Your Scanner 16

- Loading Documents to Scan 17**
- Supported Document Types 17
- Scanning from the Flatbed 18
- Scanning Interfaces 18

- Maintenance 21**
- Safety Precautions 21
- Hardware Properties 22
- Cleaning the Scanner 24
- Troubleshooting 25
- Uninstalling Your Scanner 26
- Visioneer® 7900 Specifications 27
- Visioneer® 7900 Parts List 28

- Appendix A: Copy Regulations 29**
- United States 29
- Canada 30
- Other Countries 31

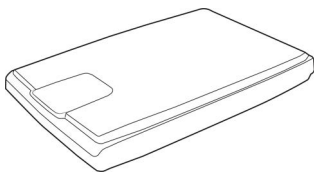
Appendix B: Compliance Information	33
Product Recycling & Disposal	33
USA & Canada	33
European Union	33

WELCOME

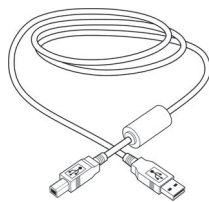
Your new Visioneer® 7900 scanner can quickly scan the document and place their electronic images on your computer.

WHAT'S IN THE BOX

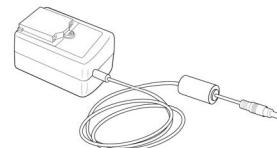
Before proceeding, check the contents of the box. If items are missing or damaged, contact the dealer where you purchased the scanner.



Visioneer® 7900



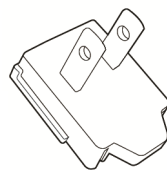
USB Cable



Power Supply



Quick Install Guide



Power plug adapter

SYSTEM REQUIREMENTS

- Intel Core 2 Duo or equivalent CPU
- USB 2.0 or 3.x Port
- Microsoft® Windows® operating system:
 - 32 or 64-bit Windows 7
 - 32 or 64-bit Windows 10
 - 32 or 64-bit Windows 11
- Minimum of 2 gigabytes (GB) internal memory (RAM)
- Minimum available hard disk space:

- 350 MB for the scanner driver
- 1 GB for Visioneer OneTouch
- 1 to 2 GB for each additional application
- Monitor (recommended settings):
 - Color quality of 16-bit or 32-bit
 - Resolution set to at least 800 x 600 pixels

Refer to your Windows documentation for instructions on setting the color quality and resolution for the monitor.

DOCUMENTATION

The following printed documentation is provided in the box:

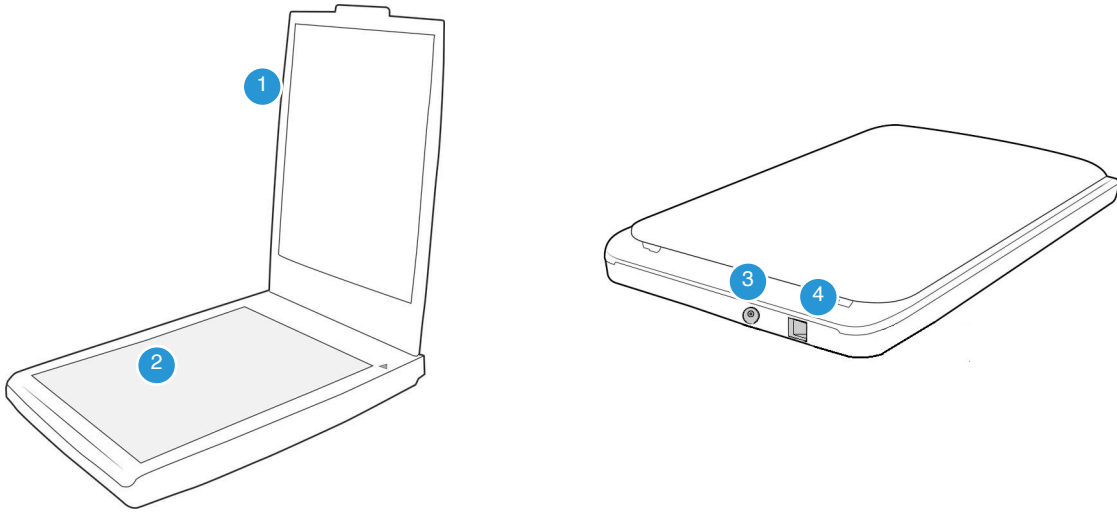
- **Installation guide** — abbreviated scanner setup and installation instructions.
- **Technical Support and Warranty Card** — contact information for technical support and customer service, and a brief overview of our standard product warranty. Follow the instructions on the card to register your device.

The following soft-copy documentation is available during installation or on www.visioneer.com:

- **Scanner user guide** — instructions for scanner setup, installation, operation, maintenance, safety, and warranty.
- **OneTouch scanning guide** — instructions for configuring and scanning using OneTouch. (for windows)
- **TWAIN scanning guide** — instructions for accessing and scanning using the TWAIN interface.
- **Patch code sheets** — use with an application that supports detection of patch code data when using the TWAIN interface. The patch code page layouts have been specifically designed for your scanner. The file contains Patch 1 layouts for A4 and U.S. Letter size pages.

Make sure you print the correct page size for the paper in your printer. Also, make sure the application you are using is not set to automatically scale the page to fit on the paper in your printer.

THE VIONEER® 7900 FEATURES

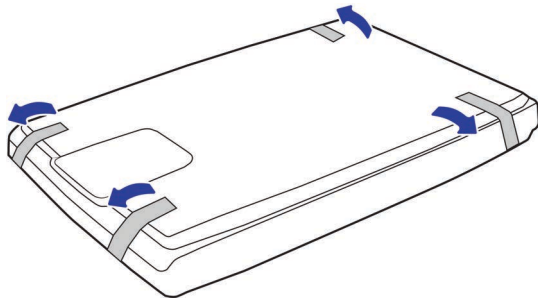


1. **Scanner Lid** — Protects the document from light and contamination.
2. **Flatbed** — Items are placed face down aligned at the arrow symbol at the bottom right corner.
3. **Power Jack** — Connect the power cord to the scanner.
4. **USB port** — Connects the scanner to the computer.

SETUP

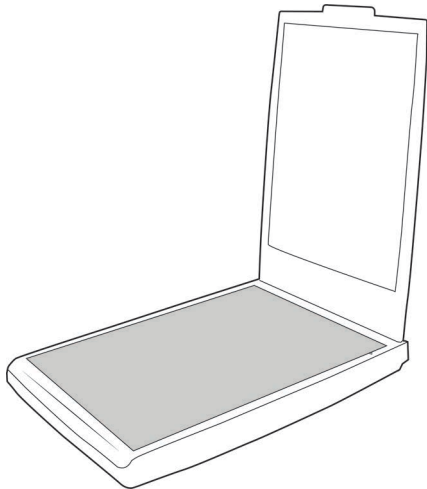
UNPACKING THE VISIONEER® 7900

1. Remove the scanner from its protective foam and plastic bag.
2. Remove any shipping tape from the scanner as indicated in the following illustration(s).



The above illustrations are for example purposes only. Your scanner's packaging may vary slightly.

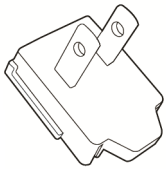
3. Open the scanner lid and remove any tape or protective sheet from inside.



4. Close the scanner lid when you are finished.

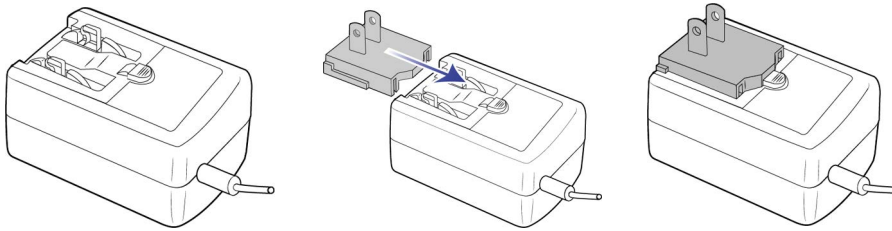
CONNECT THE POWER CORD

1. Select the power plug adapter that is appropriate for the wall outlet in your country.

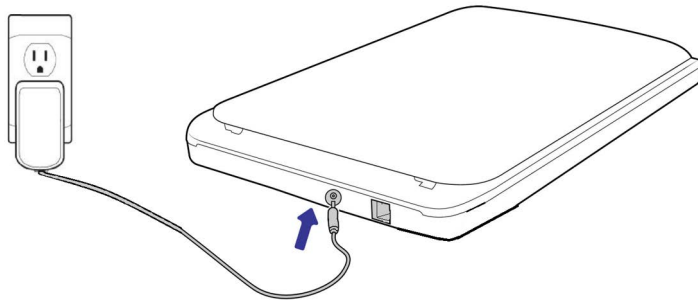


North America

1. Slide the power plug adapter into the power supply base.



2. Plug the power supply into the power port on the scanner.
3. Plug the power cord into the power supply and into a wall outlet..

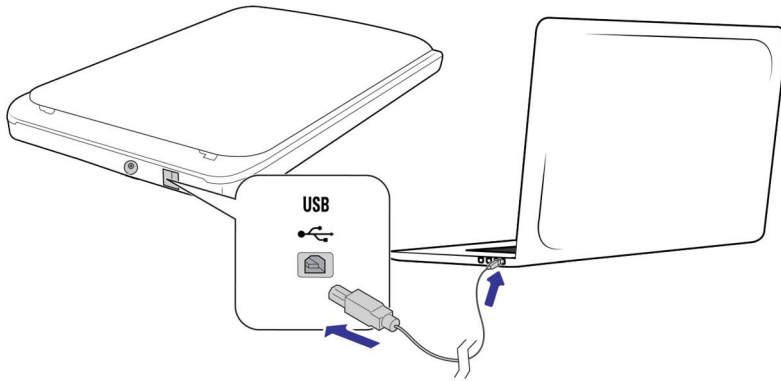


Note: Only use the power supply included with your device. Connecting any other type of power supply may damage your device and will void its warranty.

CONNECT THE USB CABLE

1. Plug the round end of the USB cable into USB port on the device.

2. Plug the flat end of the USB cable into an available USB port on the back of the computer.



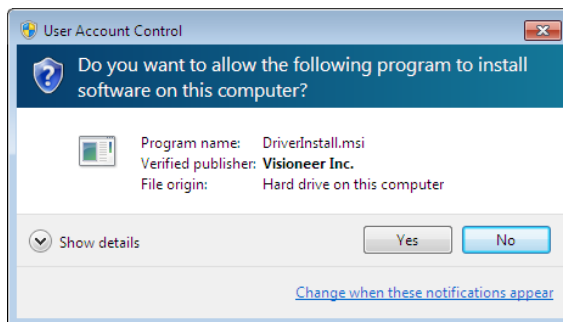
Note: Only use the USB power cable included with your scanner. Connecting any other type of USB power cable may damage your scanner, and will void its warranty. If you do not have your USB power cable, you can order a new one by contacting our Customer Service department. Please refer to the Technical Support Card, included with your scanner, for our company contact information, or visit the Parts & Accessories page for your scanner at www.vioneer.com.

INSTALLATION

WINDOWS INSTALLATION

Please make sure of the following before you begin installation:

- If you are prompted to reboot during installation, please select **No**. Finish installing the rest of the software, then close all open windows and reboot your computer.
- The information in this guide may cover software not provided with the scanner you purchased. Please disregard any information about the software not applicable to your scanner.
- If your computer has AntiVirus or AntiSpyware software running, you may encounter alerts or messages during installation asking you to allow the installation to proceed. Although the messages will differ based on the software your computer is running, in each case you should allow the installation to proceed if that option is available. Alternatively, you can turn off the AntiVirus or AntiSpyware software before installing your scanner, but if you do, make sure to turn it back on again when installation is finished.
- If your computer is running Windows 7 or later, you may see the Windows User Account Control screen asking you to confirm system changes. Click the **Yes** button to allow the installation to proceed.

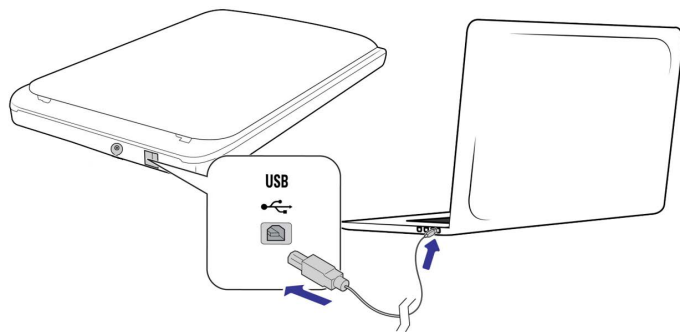


Windows USB Driver Installation

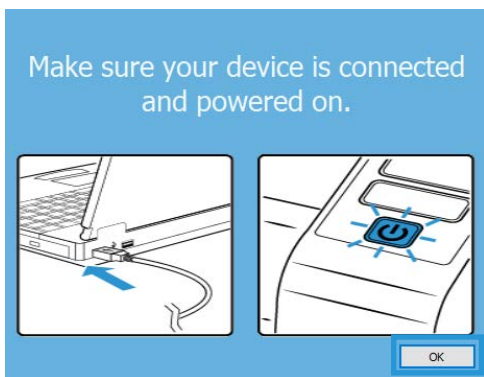
Follow these steps to install the driver to use the scanner via a USB connection to your PC. This allows only the logged in user to use the scanner.

1. Start Microsoft Windows and make sure that no other applications are running.
2. Turn on the scanner power.
The status light comes on and flashes indicating that the scanner is receiving power.
3. Go to www.visioneer.com/install
4. Launch the installer once the download is complete.

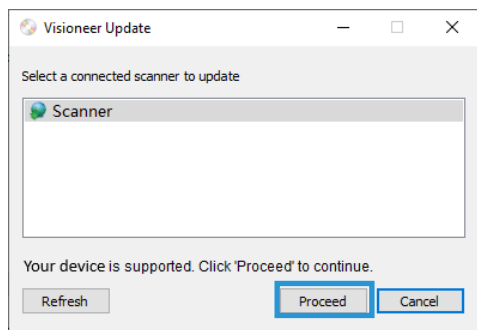
5. Plug the USB cable into the USB port on the scanner then into a USB port on the computer.



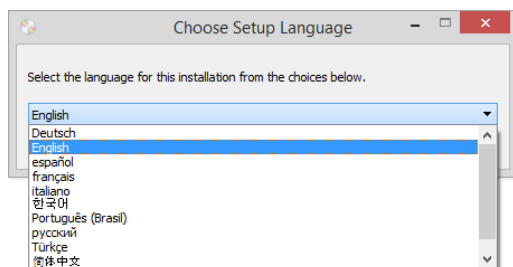
6. Click **OK**.



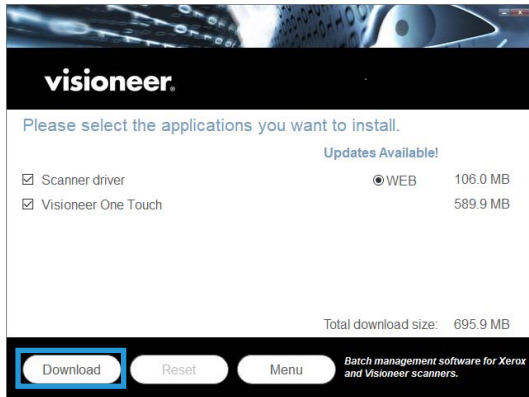
7. Select your scanner from the list. Click **Proceed**.



8. The Select Language window opens. Click the drop-down menu arrow and select the language to use. Click **OK**.



9. Make sure the boxes for **Scanner Driver** and **Visioneer OneTouch** are selected, as well as any other applications you want to install.

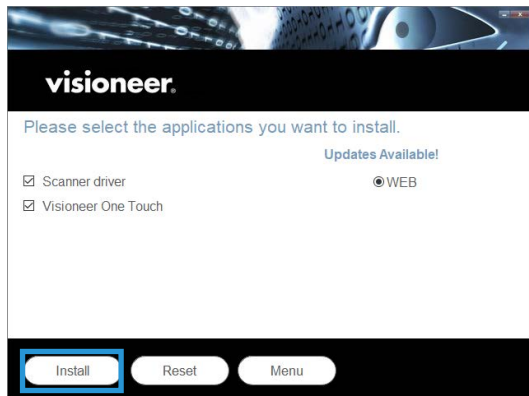


The software will have to first be downloaded by clicking **Download**. The total size of the download is shown at the bottom.

10. After the download has begun, it can be paused. If changes to the selections are required, it is necessary to click **Reset** while the download is paused. This will allow the settings to be changed.

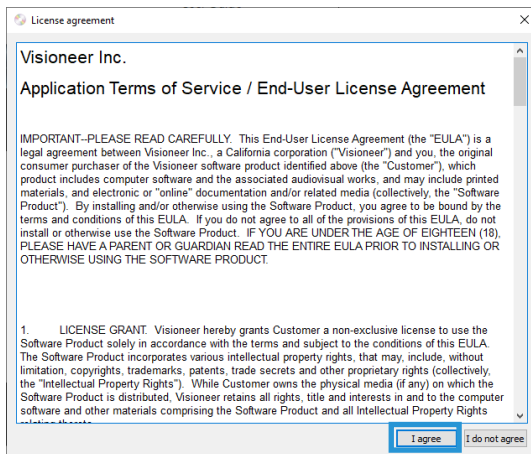
Note: Clicking the Reset button in either the Main menu or the Install menu will cause both partially completed and previously downloaded files to be deleted. In order to be installed they will have to be downloaded again.

11. Once all of the software has been downloaded, click **Install**.

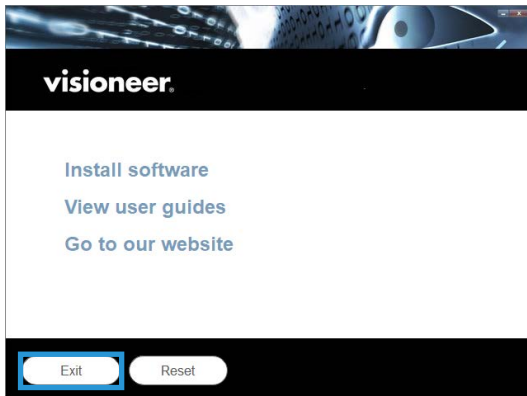


12. On the License Agreement window, read the license agreement. If you accept the terms, select **I Agree**.

If you click **I do not agree**, the installation will terminate.

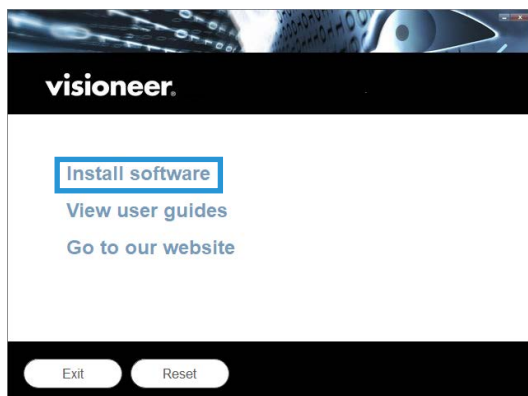


13. Once all of the software has been installed, Click **Exit**.



INSTALLING ADDITIONAL APPLICATIONS

1. Once all of the software has been installed, click on **Install software**.

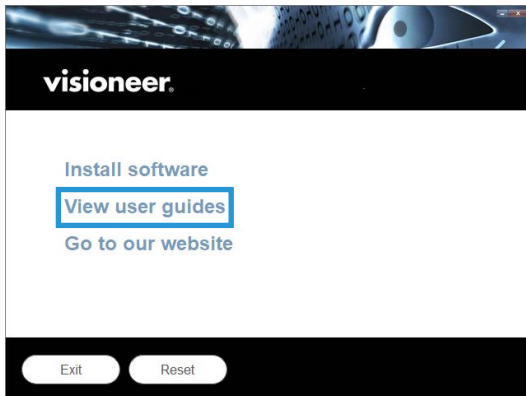


2. If a version of the software is already installed on the system, the option will be grayed out. However, if there is a newer version available, it will be possible to download and install.

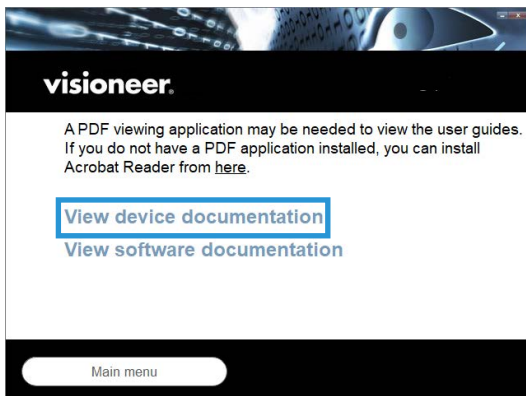
3. The software will have to first be downloaded by clicking **Download**.
4. Once all software has been downloaded, click **Install**.
5. Follow the instructions on the screen to install each of the additional applications.

VIEW THE USER GUIDES

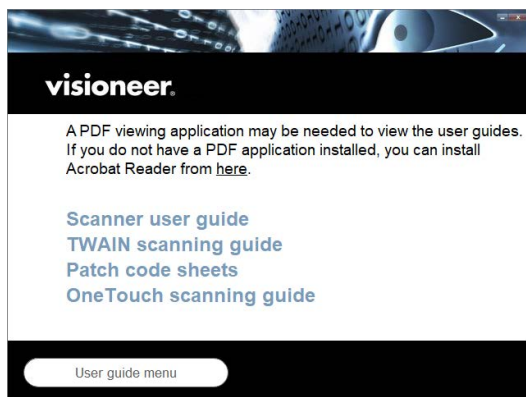
1. Once all of the software has been installed, click on **View user guides** from the Main menu.



2. Click on **View scanner documentation** to access the scanner user guide and scanning guides for OneTouch and TWAIN.



3. Click the links of the guides you want to view.



Click on the **User guide menu** button to return to the main user guide window, then select the other documentation section to view the user guides.

REGISTER YOUR SCANNER

Registering your scanner is important as it provides you with access to our free telephone support service. Registration also gives you free access to software updates for your scanner.

To register your scanner:

You will need an active network connection to register your scanner. If you do not have network access you can contact our customer service department to register the scanner. Please refer to the Technical Support Card, that you received with the scanner, for our customer service contact information.

1. Open an Internet Explorer window, or any other Internet browser you have installed on your computer.
2. In the web address field type www.visioneer.com.
3. Press **Enter** on your computer's keyboard or click the option on screen to go to the web address.
4. When the Visioneer® 7900 scanners web page loads click on **Register Your Product**.
5. Fill in the registration form, all required fields have an asterisk (*).
A valid email address is required for registration.
6. You will be asked to enter the serial number for the scanner, it is located on the back or underside of the scanner.
7. After filling in the form, click on **Submit Your Registration** to complete the registration.

LOADING DOCUMENTS TO SCAN

Always remove any staples or paper clips from documents before loading them into the scanner. Staples and paper clips can jam the feed mechanism and scratch the internal components. Also remove any labels, stickers, or Post-It™ notes that may come off during the scanning process and get stuck in the scanner. Misuse as described here will void your scanner's warranty. Please go to www.visioneer.com, select your product, and then click the "Warranty Program" link to view the warranty terms and conditions for your scanner.



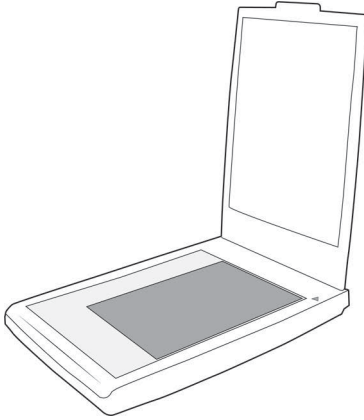
SUPPORTED DOCUMENT TYPES

You can scan the following types of documents and cards with this scanner.

- Document size
 - A4 (210 x 297 mm)
 - A5 (149 x 210 mm)
 - A6 (105 x 149 mm)
 - B5 (JIS) (182 x 257 mm)
 - Letter (215.9 x 279.4 mm)
 - 8K
 - 16K
 - Postcard
- Maximum scan size: 8.5" x 11.7" (216 x 297 mm)

SCANNING FROM THE FLATBED

1. Place an document face down on the glass. Align the top edge of the document with the reference marks on the scanner.

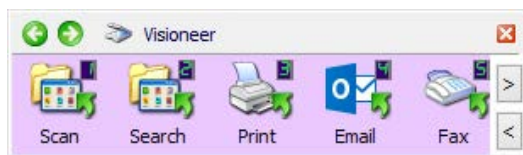


2. Close the scanner lid.
3. You can now scan the documents using the OneTouch, or one of the other scanning interfaces.

SCANNING INTERFACES

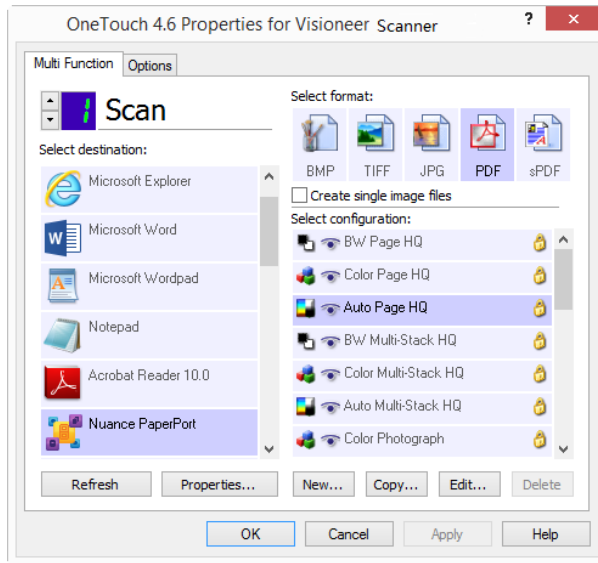
If you selected the recommended installation, then you have several different options to scan with your Visioneer® 7900. Each method scans equally well, so use the one with appropriate options for the item you are scanning

- **OneTouch Button Panel** — Use this scan option when you want to scan from the computer screen. Scanning from the on-screen OneTouch Button Panel is the same as selecting a scanning option on the scanner, except you click an icon that represents the function.

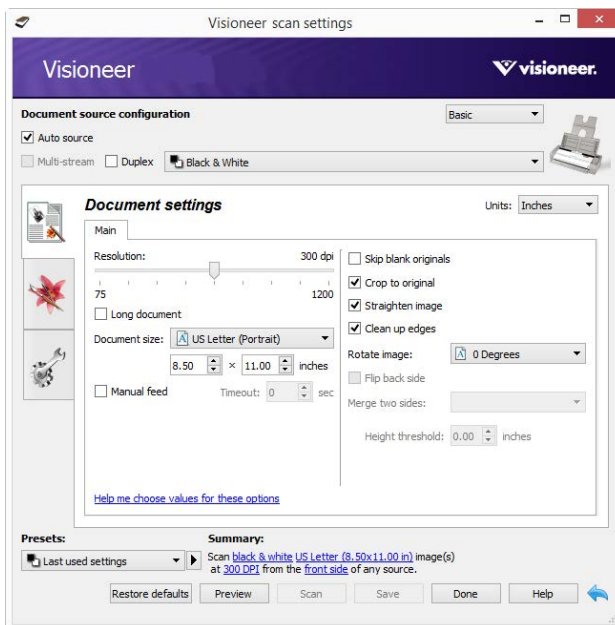


OneTouch Button Panel

Please see the OneTouch Scanning Guide on www.visioneer.com for instructions. You can also click the **Help** button in the OneTouch Properties window to open the instructions in an Internet browser.



- **TWAIN and WIA Interface** — This option uses your scanner's TWAIN interface to scan. Select scanning options before scanning, put the document in the scanner, then click the **Scan** button in the TWAIN interface window.



Please see the TWAIN Scanning Guide on www.visioneer.com for instructions. You can also click the **Help** button in the TWAIN interface to open the instructions in an Internet browser.

MAINTENANCE

This section contains information about maintenance, troubleshooting, uninstalling, scanner specifications, and spare parts.

SAFETY PRECAUTIONS

When servicing the scanner you should take the following precautions to ensure your safety and prevent damage to the scanner.

Do These

- Wear protective gloves when cleaning the scanner with Isopropyl rubbing alcohol. Rubbing alcohol may irritate sensitive skin.
- Only perform scanner maintenance as described in this chapter.
- Keep the scanner and cleaning supplies away from any open flame or heat source as any form of alcohol is flammable.
- Always read the instructions in each section carefully, the instructions are specific to the part you are installing or servicing.
- Move the scanner to an area that has adequate room for opening the scanner.
- If your scanner has a power cord and/or power switch, always turn off the scanner and unplug the power cord before performing maintenance, unless the maintenance instructions below specifically state to leave the scanner plugged in and powered on.
- Always unplug the USB cable from the scanner before performing maintenance, unless the maintenance instructions below specifically state to leave the scanner plugged in.
- Wear an anti-static strap to prevent electrostatic discharge when touching metal components.
- Keep all cleaning supplies, scanner parts and accessories out of the reach of children.

Do Not Do These

- Never attempt installation of any part not described in this manual.
- Never service the scanner near a radiator or any other heat source.
- Never use aerosol sprays or compressed air, or attempt to lubricate parts with an oil or silicon spray.
- Never service the scanner in an area where there are open liquid containers.
- Never pour or spill liquid on the scanner or any of its components.

HARDWARE PROPERTIES

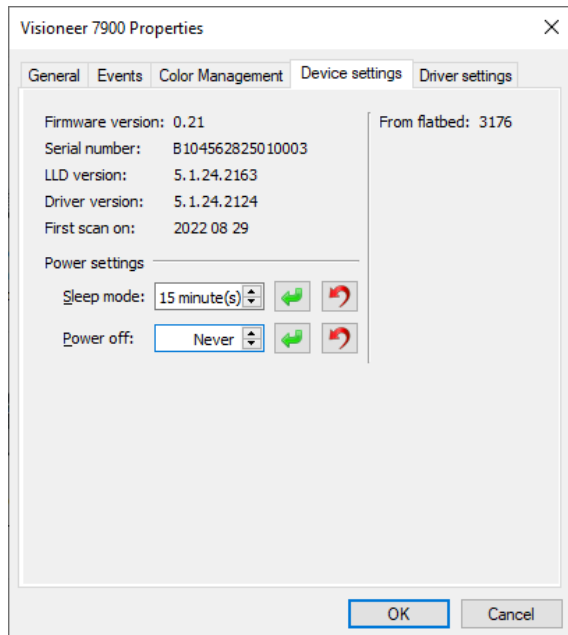
You can use the scanner's properties page to keep track of scanner maintenance, change some of the hardware options, configure the scanner interface behavior, and adjust application options that may be available for your scanner.

To open the scanner hardware properties page:

- **Windows 7 and later** — from the Windows Control Panel, open **Hardware and Sound** and then **Devices and Printers**. Right-click on the scanner and then select **Scan properties** from the list.

Device Settings

The Device Settings tab shows the hardware information for your scanner. The options on the Device Settings tab will be available based on whether or not the scanner hardware supports the feature. Some features described herein may not be available for the current scanner. Please disregard any information about features that you do not see in the interface for your scanner.



Scanner Details

- **Firmware version** — this is the scanner's hardware processor version number.
- **Serial number** — the scanner's unique identification number.
- **LLD version** — the scanner's base driver version. This is not the OneTouch software revision, TWAIN or WIA driver versions.
- **Driver version** — this is the version of the scanner's TWAIN driver.

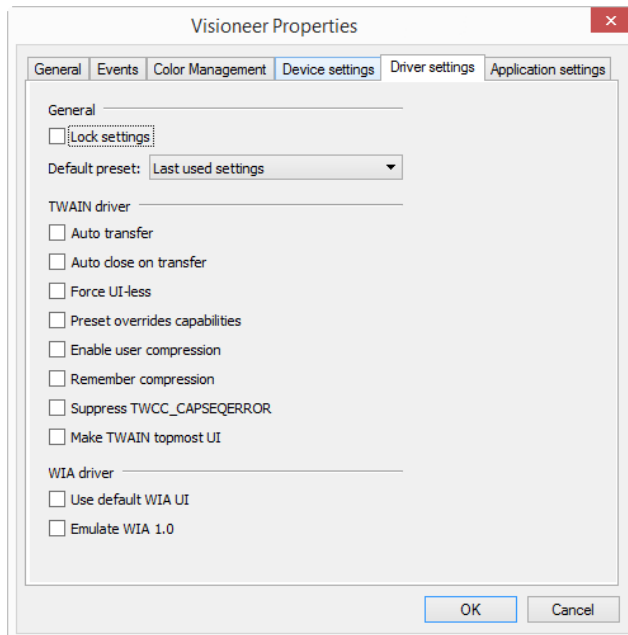
Power Settings

- **Sleep mode** — sleep mode is the low-power state when the scanner is not in use. You can adjust the amount of time you want the scanner to wait before it goes into low power.

- Click the **green enter** button to save any changes in the Sleep mode field.
- Click the **red reset** button to reset to the default timeout value.
- **Power off** — input the number of minutes you want the scanner to wait before it turns itself off.
 - Click the **green enter** button to save any changes in the power off field.
 - Click the **red reset** button to reset to the default timeout value.

Driver Settings

The options in this panel are for configuring how the TWAIN interface will behave in some scenarios. Please see the TWAIN scanning guide on www.vioneer.com for instructions.



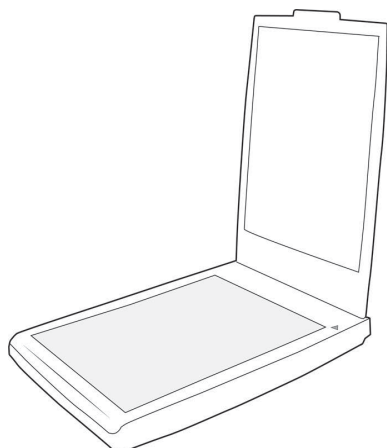
CLEANING THE SCANNER

Regular maintenance of your scanner can help to ensure continual optimal performance.

Using a soft, lint-free cloth, wipe down all plastic surfaces on the scanner.

Cleaning the inside of the scanner helps to keep your scanner operating at optimum performance.

1. Open the scanner lid.



2. Wet a soft cloth with some Isopropyl rubbing alcohol (70%).
3. Wipe the flatbed.
4. Close the scanner lid. Your device is now ready to use

TROUBLESHOOTING

Problem: The scanner won't scan. What's wrong?

Check for one of these possible causes:

- **Are the cables loose or not plugged in securely?** Inspect the cable connections. Make sure the cables are plugged in securely.
- **Is the scanner's status light on?** Turn on the scanner's power. If the status light doesn't come on, plug the power supply into another electrical outlet. If you are using a UPS battery back-up or power strip, try plugging the scanner directly to a wall outlet.
- **Did you restart the computer and scanner?** If the scanner gets a paper jam, or loses connection because of an error, try restarting your computer and power cycling the scanner.
- **Did you plug the scanner into a USB hub?** If you're using a USB hub to connect the scanner try plugging the scanner's USB cable directly to the back of the computer. It is not recommended that you use the scanner with a USB hub, if you are using a hub, the hub must have its own power supply.
- **Is the USB cable 6' or less?** If you are using a USB cable that is longer than 6' you may lose connection to the scanner. The recommended USB cable length is 6' or less, the USB cable provided with your scanner is within this range.
- **Did you select another image source in the scanning software?** If you use multiple imaging devices with your computer, such as a camera, all-in-one printer, or another scanner, you may have selected another source for images. Make sure Visioneer® 7900 is selected as the scanner.

Problem: Why does my scanner not function after performing a system restore on Windows?

The system restore process may have corrupted some of the driver components. It is recommended that you reinstall your scanner driver. Please refer to [Uninstalling Your Scanner](#) for installation instructions.

Problem: Why won't my scanner work after the computer has been sitting idle for several hours?

To resolve the problem, simply turn off the scanner power then turn it back on again.

This may occur after Windows goes into power saving mode to “hibernate” the computer into a low power state. When you move your mouse or type on the keyboard it “wakes” the computer back up and restores full power to the system. This power fluctuation during the computer’s hibernating period may sometimes cause the scanner to lose communication to the computer.

Problem: The installation will not complete successfully. If installation finishes, the scanner’s OneTouch options do not seem to work properly.

A likely cause is that some driver programs are already installed on your computer for another scanner. They may be interfering with the installation and OneTouch options, and you need to remove those other drivers and re-install your Vioneer® 7900 scanner. You can remove these programs from the Windows Control Panel. Please refer to the user manual provided with your other scanner hardware for instructions about removing the driver and software for that unit.

Problem: My computer keeps giving me out of hard drive space error messages.

The minimum requirement of free hard drive space is for the installation of the scanner driver and basic, low resolution, scanning. High resolution scans result in files that can be over 1 gigabyte in size. Free up some space on your hard drive for the software to be able to save the scanned images.

Problem: I am getting an error message that OCR fails every time I try to scan using the OCR features from OneTouch. What is the problem?

Anti-SpyWare software that is set to always run may interfere with the driver functionality. It is recommended that you temporarily disable or suspend the automatic protection feature during scanning. After scanning is complete and your file has been saved, turn the auto-protect feature back on. You do not need to close the Anti-SpyWare software.

Problem: With AutoCrop to Original selected, sometimes I get blank pages, or pages with lines.

The pages were probably scanned in crooked, or skewed. To use AutoCrop to Original, the pages must be scanned in straight.

Problem: If the USB cable is disconnected during a scan, the scanner does not reconnect when the USB cable is plugged back in.

Unplug the power cable from the scanner, and then plug it back in.

If the scanner does not reconnect:

1. Unplug the power cable from the scanner.
2. Restart your computer.
3. After the restart is complete, plug the power cable back in.

UNINSTALLING YOUR SCANNER

Use the options in the Windows Control Panel to remove the scanner driver and modules, and any other software provided with the scanner.

Please leave the scanner’s USB cable plugged into the computer while uninstalling the scanner driver. Unplug the USB cable when directed to do so in the instructions below.

Open the list of installed programs in the Windows Control panel.

- Windows 7 and later: Open Programs and Features

Uninstalling the scanner driver:

1. In the list of installed programs click on **Visioneer® 7900 driver**.
2. Click the **Change/Remove** or **Uninstall** button.
3. Click **Yes** when asked to confirm that you want to remove the driver.

When the driver uninstallation is complete the progress window will automatically close.

4. Turn off the scanner and unplug the USB cable.
5. Reboot the computer if you are prompted to do so.

Follow these instructions to remove any of the other software you installed with your scanner. Depending on the software provided with your scanner, and which applications you installed during the scanner setup, the application list may include:

- OneTouch
- OneTouch OCR module

Uninstalling Visioneer Acuity™:

Visioneer Acuity is automatically installed when you install the scanner driver. Visioneer Acuity is a utility with advanced image processing options to instantly improve the visual clarity of anything you scan.

1. In the list of installed programs, select **Visioneer Acuity Assets**.
2. Click **Yes** when asked to confirm you want to remove the software.


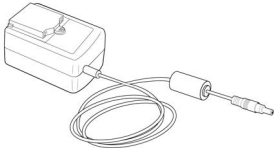
Depending on the method of installation, and your scanner model, there may be multiple entries for Visioneer Acuity in the installed programs list. The additional entries in this list are the image processing libraries needed to support various scanner models. These additional items will be called "Visioneer Acuity Assets" followed by a version number. In the scenario described here, when you want to uninstall Visioneer Acuity make sure you select and uninstall Visioneer Acuity. If you uninstall one of the entries labeled as an "asset" you will still need to uninstall the main Visioneer Acuity utility.

VISIONEER® 7900 SPECIFICATIONS

Scanner Specifications	
Document Requirements	
Document Size	A4, A5, A6, B5, Letter, 8K, 16K, Postcard
Maximum scan size	8.5" x 11.7" (216 x 297 mm)
General Specifications	
Optical Resolutions	1200 dpi
Bit Depth	24-bit color, 8-bit grayscale, 1-bit bitonal (black & white)
Scan Method	Single pass flatbed

Scanner Specifications	
Image Sensor	CIS (Contact Image Sensor)
Light Source	3-color RGB LED
Interface	Hi-Speed USB 2.0, compatible with USB 1.1
Operating Temperature	41° ~ 95° F (5° ~ 35° C without condensation)
Relative Humidity	10% ~ 85% (@35° C without condensation)
Scan speed (200 & 300 dpi)	1.5 sec
Recommended daily duty cycle	2,500 scans
Scanner Dimensions	
Width	11.2 inches (284 mm)
Depth	15.8 inches (401 mm)
Height	1.8 inches (45 mm)
Weight	4 lbs. (1.8 kg)
Power Information	
Power consumption	<ul style="list-style-type: none"> < 10 Watts (during operation) < 4 Watts (on standby) < 2 Watts (power save after 15 minutes without scanning, can be adjusted by software) < 0.3 Watt (power off)
Cable Information	
USB cable	USB A(M)/B(M), 4P, L=1850mm, UL2725#28AWG, CA1004020233510, Longwell, TID:60000071, W/CORE, 75°, RoHS
Software Information	
Supported Operating Systems	<ul style="list-style-type: none"> • Microsoft: <ul style="list-style-type: none"> – 32 or 64-bit Windows 7 – 32 or 64-bit Windows 10 – 32 or 64-bit Windows 11
Scanner Drivers	<ul style="list-style-type: none"> • Microsoft: <ul style="list-style-type: none"> – TWAIN, WIA
Bundled Software	<ul style="list-style-type: none"> • Microsoft: <ul style="list-style-type: none"> – Vioneer® OneTouch™ – Vioneer® Acuity Module

VISIONEER® 7900 PARTS LIST

Part Name	Part Number	
USB Cable	35-0102-000	
Power Supply Power Plug Adapter	37-0107-000	

APPENDIX A: COPY REGULATIONS

UNITED STATES

Congress, by statute, has forbidden the reproduction of the following subjects under certain circumstances. Penalties of fine or imprisonment may be imposed on those guilty of making such reproductions.

1. Obligations or Securities of the United States Government, such as:

Certificates of Indebtedness	National Bank Currency	Coupons from Bonds
Federal Reserve Bank Notes	Silver Certificates	Gold Certificates
United States Bonds	Treasury Notes	Federal Reserve Notes
Fractional Notes	Certificates of Deposit	Paper Money

Bonds and Obligations of certain agencies of the government, such as FHA, etc.

Bonds. (U.S. Savings Bonds may be photographed only for publicity purposes in connection with the campaign for the sale of such bonds.)

Internal Revenue Stamps. (If it is necessary to reproduce a legal document on which there is a canceled revenue stamp, this may be done provided the reproduction of the document is performed for lawful purposes.)

Postage Stamps, canceled or uncanceled. (For philatelic purposes, Postage Stamps may be photographed, provided the reproduction is in black and white and is less than 75% or more than 150% of the linear dimensions of the original.)

Postal Money Orders.

Bills, Checks, or Drafts of money drawn by or upon authorized officers of the United States.

Stamps and other representatives of value, of whatever denomination, which have been or may be issued under any Act of Congress.

2. Adjusted Compensation Certificates for Veterans of the World Wars.
3. Obligations or Securities of any Foreign Government, Bank, or Corporation.
4. Copyrighted material, unless permission of the copyright owner has been obtained or the reproduction falls within the "fair use" or library reproduction rights provisions of the copyright law. Further information of these provisions may be obtained from the Copyright Office, Library of Congress, Washington, D.C. 20559. Ask for Circular R21.

5. Certificates of Citizenship or Naturalization. (Foreign Naturalization Certificates may be photographed.)
6. Passports. (Foreign Passports may be photographed.)
7. Immigration Papers.
8. Draft Registration Cards.
9. Selective Service Induction Papers that bear any of the following Registrant’s information:

Earnings or Income	Dependency Status	Court Record
Previous military service	Physical or mental condition	

Exception: U. S. Army and Navy discharge certificates may be photographed.

10. Badges, Identification Cards, Passes, or Insignia carried by military personnel, or by members of the various Federal Departments, such as FBI, Treasury, etc. (unless photograph is ordered by the head of such department or bureau.)
11. Reproducing the following is also prohibited in certain states: Automobile Licenses — Drivers’ Licenses — Automobile Certificates of Title.

The above list is not all inclusive, and no liability is assumed for its completeness or accuracy. In case of doubt, consult your attorney.

CANADA

Parliament, by statute, has forbidden the reproduction of the following subjects under certain circumstances. Penalties of fines or imprisonment may be imposed on those guilty of making such copies.

1. Current bank notes or current paper money.
2. Obligations or securities of a government or bank.
3. Exchequer bill paper or revenue paper.
4. The public seal of Canada or of a province, or the seal of a public body or authority in Canada, or of a court of law.
5. Proclamations, orders, regulations or appointments, or notices thereof (with intent to falsely cause same to purport to have been printed by the Queen’s Printer for Canada, or the equivalent printer for a province).
6. Marks, brands, seals, wrappers or designs used by or on behalf of the Government of Canada or of a province, the government of a state other than Canada or a department, board, Commission or agency established by the Government of Canada or of a province or of a government of a state other than Canada.
7. Impressed or adhesive stamps used for the purpose of revenue by the Government of Canada or of a province or by the government of a state other than Canada.
8. Documents, registers or records kept by public officials charged with the duty of making or issuing certified copies thereof, where the reproduction falsely purports to be a certified copy thereof.
9. Copyrighted material or trademarks of any manner or kind without the consent of the copyright or trademark owner.

The above list is provided for your convenience and assistance, but it is not all inclusive, and no liability is assumed for its completeness or accuracy. In case of doubt, consult your solicitor.

OTHER COUNTRIES

Copying certain documents may be illegal in your country. Penalties of fine or imprisonment may be imposed on those found guilty of making such reproductions.

- Currency notes
- Bank notes and cheques
- Bank and government bonds and securities
- Passports and identification cards
- Copyright material or trademarks without the consent of the owner
- Postage stamps and other negotiable instruments

Note: this list is not inclusive and no liability is assumed for either its completeness or accuracy. In case of doubt, contact your legal counsel.

APPENDIX B: COMPLIANCE INFORMATION

PRODUCT RECYCLING & DISPOSAL

USA & Canada

If you are managing the disposal of your Visioneer® product, please note that the product may contain lead, mercury, Perchlorate, and other materials whose disposal may be regulated due to environmental considerations. The presence of these materials is fully consistent with global regulations applicable at the time that the product was placed on the market. For recycling and disposal information, contact your local authorities. Information for the U.S. can also be found on the Electronic Industries Alliance website.

Perchlorate Material - This product may contain one or more Perchlorate-containing devices, such as batteries. Special handling may apply.

European Union

RoHS and WEEE Compliance

This product is compliant with RoHS Regulations of the European Parliament and Council Directive on the Restrictions of the Use of Certain Hazardous Substances in Electrical and Electronic Equipment (2011/65/EU), and with the Waste Electrical and Electronic Equipment (WEEE) Directive (2012/19/EU).

Some equipment may be used in both a domestic/household and a professional/business application.

Professional/Business Environment

Application of this symbol on your equipment is confirmation that you must dispose of this equipment in compliance with agreed national procedures. In accordance with European legislation, end of life electrical and electronic equipment subject to disposal must be managed within agreed procedures.



