

visioneer®

Patriot™ PH80f
User Guide

USER GUIDE

Visioneer® Patriot PH80f

Copyright Information

© 2024 Visioneer, Inc. All rights reserved. Visioneer is registered trademark of Visioneer, Inc.

Changes are periodically made to this document. Changes, technical inaccuracies, and typographic errors will be corrected in subsequent editions. Information is subject to change without notice and does not represent a commitment on the part of Visioneer.

Document Version: 05-1055-000 (September 2024)

This product is covered by one or more of the following patents: 6,064,778, 6,480,304, 7,715,061, 10/838,364, 7,397,587.WO 02/25571, 7,617,985, 11/140,653, 10/787,912

Reproduction, adaptation, or translation without prior written permission is prohibited, except as allowed under the copyright laws. Copyright protection claimed includes all forms of matters of copyrightable materials and information now allowed by statutory or judicial law or hereinafter granted, including without limitation, material generated from the software programs which are displayed on the screen such as styles, templates, icons, screen displays, looks, etc.

The software described is furnished under a licensing agreement. The software may be used or copied only in accordance with the terms of such an agreement. It is against the law to copy the software on any medium except as specifically allowed in the licensing agreement. No part of this document may be reproduced or transmitted in any form or by any means, electronic or mechanical, including photocopying, recording, or information storage and retrieval systems, or translated to another language, for any purpose other than the licensee's personal use and as specifically allowed in the licensing agreement, without the express written permission of Visioneer.

ISIS® is a registered trademark of EMC²® Corporation in the United States and/or other countries.

Adobe®, Adobe® Acrobat®, Adobe® Reader®, and the Adobe® PDF logo are registered trademarks of Adobe Systems Incorporated in the United States and/or other countries.

Post-It® is a registered trademark of 3M in the United States and/or other countries.

Microsoft is a U.S. registered trademark of Microsoft Corporation. Windows™ is a trademark and SharePoint® is a registered trademark of Microsoft Corporation.

Kensington® is a registered trademark of ACCO Brands Corporation.

ZyINDEX is a registered trademark of ZyLAB International, Inc. ZyINDEX toolkit portions, Copyright © 1990-1998, ZyLAB International, Inc.

All other products mentioned herein may be trademarks of their respective companies and are hereby acknowledged.

Visioneer's Limited Product Warranty

Please go to www.visioneer.com, select your product, and then click the "Warranty Program" link to view the warranty terms and conditions for your scanner.

Restricted Rights Legend

Use, duplication, or disclosure is subject to restrictions as set forth in contract subdivision (c)(1)(ii) of the Rights in Technical Data and Computer Software Clause 52.227-FAR14. Material scanned by this product may be protected by governmental laws and other regulations, such as copyright laws. The customer is solely responsible for complying with all such laws and regulations.

RoHS and WEEE Compliance

This product is compliant with RoHS Regulations of the European Parliament and Council Directive on the Restrictions of the Use of Certain Hazardous Substances in Electrical and Electronic Equipment (2002/95/EC), and with the Waste Electrical and Electronic Equipment (WEEE) Directive (2002/96/EC).

United States (FCC Regulations)



This equipment has been tested and found to comply with the limits for a Class B digital device, pursuant to Part 15 of the FCC Rules. These limits are designed to provide reasonable protection against harmful interference in a residential installation. This equipment generates, uses, and can radiate radio frequency energy and, if not installed and used in accordance with the instruction manual, may cause harmful interference to radio communications.

However, there is no guarantee that interference will not occur in a particular installation. If this equipment does cause harmful interference to radio or television reception, which can be determined by turning the equipment off and on, the user is encouraged to try to correct the interference by one or more of the following measures:

- Reorient or relocate the receiving antenna.
- Increase the separation between the equipment and receiver.
- Connect the equipment into an outlet on a circuit different from that to which the receiver is connected.
- Consult the dealer or an experienced radio/TV technician for help.

This device complies with Part 15 of the FCC Rules. Operation is subject to the following two conditions: (1) This device may not cause harmful interference, and (2) this device must accept any interference received, including interference that may cause undesired operation.

Changes and modifications to this equipment not specifically approved by Visioneer may void the user's authority to operate this equipment.

Shielded cables must be used with this equipment to maintain compliance with FCC regulations.

ENERGY STAR for the USA

Energy Program compliance

As an ENERGY STAR® partner, Visioneer Inc. has determined that this product meets the ENERGY STAR guidelines for Imaging Equipment.



ENERGY STAR and the ENERGY STAR mark are registered trademarks owned by the U.S. Environmental Protection Agency. The ENERGY STAR Imaging Equipment Program is a team effort between the U.S., European Union and Japanese governments and the office equipment industry to promote energy-efficient copiers, printers, fax, multifunction machine, personal computers, and monitors. Reducing product energy consumption helps combat smog, acid rain and long-term changes to the climate by decreasing the emissions that result from generating electricity.

Visual Display

WARNING: This device is not intended for use in the direct field of view at visual display workplaces. To avoid incommoding reflections at visual display workplaces, this device must not be placed in the direct field of view.

Class 1 LED

This machine is certified as Class 1 LED product. This means that this machine does not produce hazardous laser radiation.

Product Recycling & Disposal

If you are managing the disposal of your Visioneer® product, please note that the product may contain lead, mercury, Perchlorate, and other materials whose disposal may be regulated due to environmental considerations. The presence of these materials is fully consistent with global regulations applicable at the time that the product was placed on the market. For recycling and disposal information, contact your local authorities. In the United States, you may also refer to the Electronic Industries Alliance web site: <http://www.eiae.org>.

Perchlorate Material - This product may contain one or more Perchlorate-containing devices, such as batteries. Special handling may apply, please see: <https://dtsc.ca.gov/perchlorate/>.

Safety

Notices and Safety

Please read the following instructions carefully before operating the machine and refer to them as needed to ensure the continued safe operation of your machine.

Your Visioneer® product and supplies have been designed and tested to meet strict safety requirements. These include safety agency evaluation and certification, and compliance with electromagnetic regulations and established environmental standards.

WARNING: The safety and environment testing and performance of this product have been verified using Visioneer® materials only. Unauthorized alterations, which may include the addition of new functions or connection of external devices, may impact the product certification. Please contact your Visioneer representative for more information.

Operational Safety Information

Your Visioneer® equipment and supplies have been designed and tested to meet strict safety requirements. These include safety agency examination, approval, and compliance with established environmental standards.

To ensure the continued safe operation of your Visioneer® equipment, follow these safety guidelines at all times:

Do these:

- Always follow all warnings and instructions that are marked on or supplied with the equipment.
- Always use materials specifically designated for this product, the use of other materials may result in poor performance and create a hazardous situation. Do not use aerosol cleaners, they may be explosive and flammable under certain conditions.
- Always exercise care when moving or relocating equipment.
- Always locate the machine on a solid support surface that has adequate strength to support the weight of the machine.
- Always locate the machine in an area that has adequate ventilation and room for servicing.
- Always unplug this equipment from the electrical outlet before cleaning.

Do not do these:

- Never attempt any maintenance function that is not specifically described in this documentation.
- Never remove covers or guards that are fastened with screws. There are no operator serviceable areas within these covers.
- Never locate the machine near a radiator or any other heat source.
- Never override or “cheat” any of the electrical or mechanical interlock devices.
- Always unplug this equipment from the electrical outlet before cleaning.

Emergency Power Off

If any of the following conditions occur, turn off the scanner immediately and disconnect the power cable(s) from the electrical outlet(s).

- The equipment emits unusual odors or makes unusual noises.
- The power cable is damaged or frayed.
- A wall panel circuit breaker, fuse, or other safety device has been tripped.
- Liquid is spilled into the machine.

- The machine is exposed to water.
- Any part of the machine is damaged.

Maintenance Information

- Any operator product maintenance procedures will be described in the user documentation supplied with the product.
- Do not carry out any maintenance on this product which is not described in the customer documentation.
- Do not use aerosol cleaners. The use of cleaners that are not approved may cause poor performance of the equipment, and could cause a dangerous condition.
- Use supplies and cleaning materials only as directed in this manual.
- Do not remove covers or guards that are fastened with screws. There are no parts behind these covers that you can maintain or service.
- Do not perform any maintenance procedures unless you have been trained to do them by an authorized local dealer or unless a procedure is specifically described in the user manuals.
- Never place this equipment where people might step on or trip on the power cord.

CONTENTS

Welcome	3
What's in the Box	3
System Requirements	3
Documentation	4
The Visioneer® Patriot PH80f Scanner Features	5
Scanner Setup	7
Unpacking the Visioneer® Patriot PH80f	7
Connect the Power Cord	9
Connect the USB Cable	9
Installation	11
Windows USB Driver Installation	11
Installing Additional Applications	14
View the User Guides	15
Register Your Scanner	16
The Scanner's LCD	17
The Scanner LCD's Main Screen	17
Accessing the scanner LCD menu	17
Loading Documents to Scan	21
Scanning from the Automatic Document Feeder (ADF)	21
Supported Document Types	21
Documents to Avoid Scanning	22
Unsupported Document Types	22
Preparing Documents for Scanning	23
Loading Documents	23
Scan from the Flatbed Glass	24
Support Document Type	24
Loading Document	24
Scanning Interfaces	25
Maintenance	27
Safety Precautions	27
Hardware Properties	28
Device Settings	28
Driver Settings	29

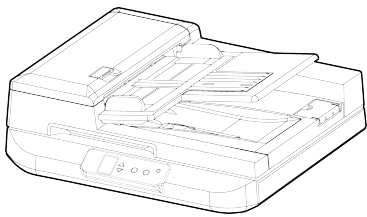
Clearing Paper Jams	29
Cleaning the Scanner	30
Cleaning Inside the Automatic Document Feeder	30
Cleaning the Scanner Glass	32
Replacing the Roller(s)	33
Replacing the Friction Roller	34
Replacing the Feed Roller	35
Troubleshooting	37
Error Light Troubleshooting Codes	39
Uninstalling Your Scanner	41
Visioneer® Patriot PH80f Specifications	42
Visioneer® Patriot PH80f Parts List	43
Appendix A: Copy Regulations	45
United States	45
Canada	46
Other Countries	47
Appendix B: Compliance Information	49
Product Recycling & Disposal	49
USA & Canada	49
European Union	49

WELCOME

Your new Visioneer® Patriot PH80f scanner can quickly scan stacks of single-sided or double-sided pages and place their electronic images on your computer.

WHAT'S IN THE BOX

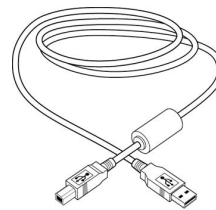
Before proceeding, check the contents of the box. If items are missing or damaged, contact the dealer where you purchased the scanner.



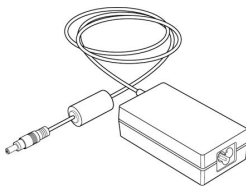
Visioneer® Patriot PH80f



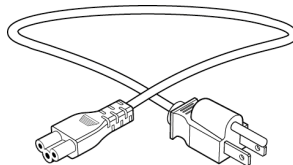
Quick Install Guide



USB Cable



Power Supply



Power Cord

SYSTEM REQUIREMENTS

- Intel i3 or equivalent CPU
- Universal Serial Bus (USB) port
- Microsoft® Windows® operating system:
 - 32-bit or 64-bit Windows 7 (Service Pack 1)
 - 32-bit or 64-bit Windows 10
 - 64-bit Windows 11
- 2 gigabyte (GB) internal memory (RAM)

- Minimum available hard disk space:
 - 350 MB for the scanner driver
 - 750 MB for Vioneer OneTouch
 - 1 to 2 GB for each additional application
- Monitor (recommended settings):
 - Color quality of 16-bit or 32-bit
 - Resolution set to at least 800 x 600 pixels

Refer to your Windows documentation for instructions on setting the color quality and resolution for the monitor.

DOCUMENTATION

The following printed documentation is provided in the box:

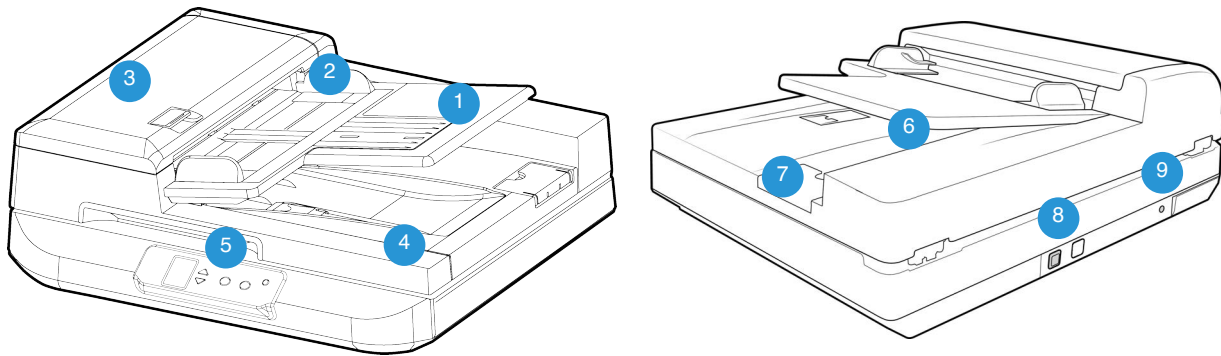
- **Installation guide**—abbreviated scanner setup and installation instructions.
- **Technical Support and Warranty Card** — contact information for technical support and customer service, and a brief overview of our standard product warranty. Follow the instructions on the card to register your device.

The following soft-copy documentation is available during installation or on www.vioneer.com:

- **Scanner user guide**—instructions for scanner setup, installation, operation, maintenance, safety, and warranty
- **OneTouch scanning guide**—instructions for configuring and scanning using OneTouch
- **TWAIN scanning guide**—instructions for accessing and scanning using the TWAIN interface
- **Patch code sheets** — use with an application that supports detection of patch code data when using the TWAIN interface. The patch code page layouts have been specifically designed for your scanner. The file contains Patch 1 layouts for A4 and U.S. Letter size pages.

Make sure you print the correct page size for the paper in your printer. Also, make sure the application you are using is not set to automatically scale the page to fit on the paper in your printer.

THE VIONEER® PATRIOT PH80f SCANNER FEATURES

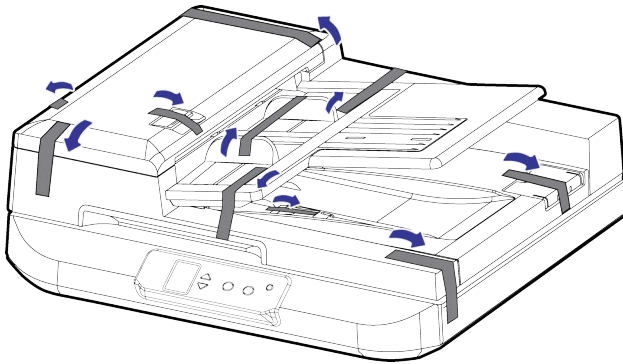


1. **Input Tray**—Holds the documents in the Automatic Document Feeder for scanning.
2. **Paper Guides**—Guides adjust to support various document widths.
3. **ADF Cover**—Pull to open the Automatic Document Feeder.
4. **Scanner Lid**—Lift lid to place an item on the flatbed glass for scanning.
5. **Control panel**—OneTouch scanning controls.
 - **LED Number**—The selected OneTouch function for the Simplex and Duplex buttons.
 - **Function buttons**—Selects the scan setting for the OneTouch buttons. Press the up or down arrow to cycle through the settings.
 - **Duplex button**—Press to scan double-sided documents.
 - **Simplex button**—Press to scan single-sided documents.
 - **Status light / Power Button**—Turns the scanner's power off and indicates the scanner's status.
6. **Output Tray**—Holds documents after being scanned through the Automatic Document Feeder.
7. **Paper Stop**—Holds documents in the output tray.
8. **Universal Serial Bus (USB) port**—Connects the scanner to the computer.
9. **Power jack**—Connects the power cord to the scanner.

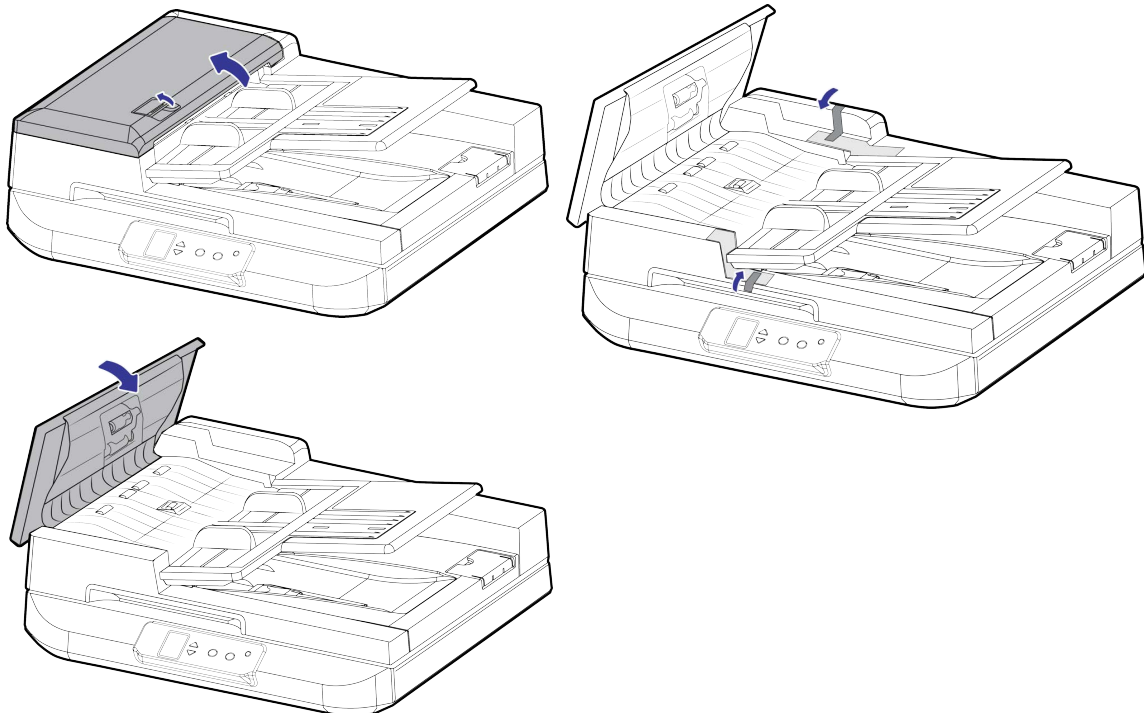
SCANNER SETUP

UNPACKING THE VISIONEER® PATRIOT PH80f

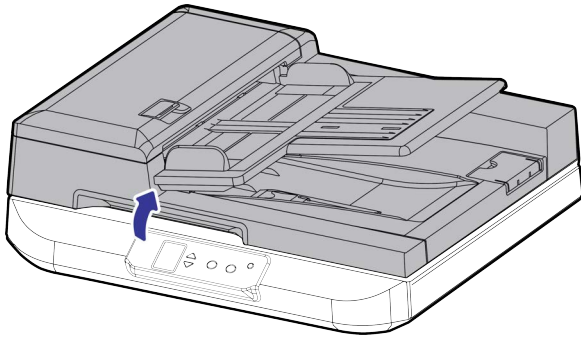
1. Remove the scanner from its protective foam and plastic bag.
2. Remove any shipping tape from the scanner as indicated in the following illustration(s).



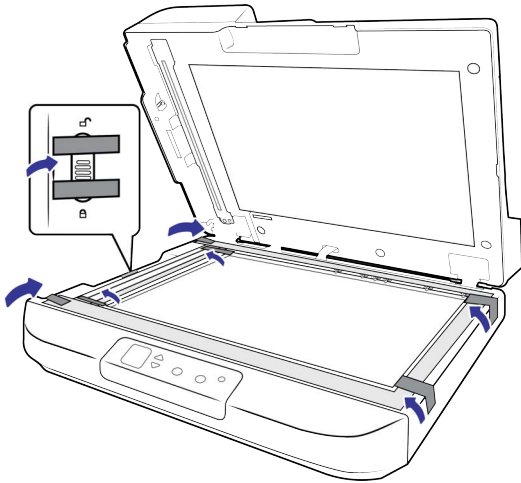
3. Open the automatic document feeder cover and remove any tape or protective foam from inside the feeder. Close the feeder cover when you are finished.



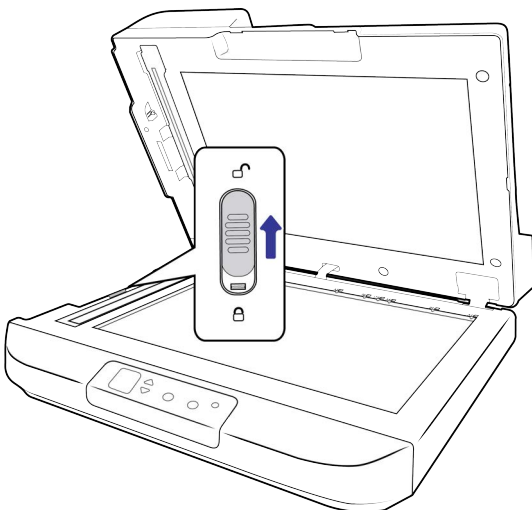
4. Lift the scanner lid.



5. Remove any tape and protective foam from around or on the flatbed glass.



6. Slide the locking tab to the unlocked position.



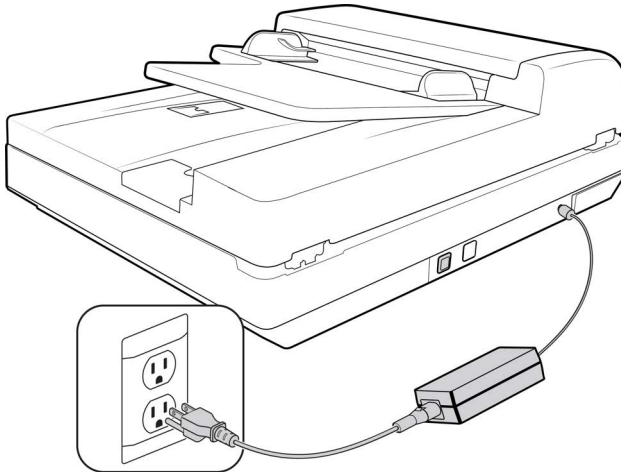
Note: Make sure to lock it when you move or repack the scanner.

7. Close the scanner lid when you are finished.

CONNECT THE POWER CORD

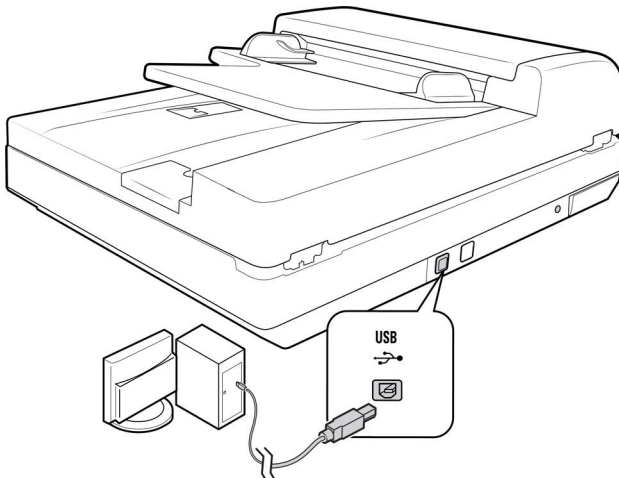
Note: Only use the power supply included with your scanner. Connecting any other type of power supply may damage your scanner, and will void its warranty.

1. Plug the power supply into the power port on the scanner.
2. Plug the power cord into the power supply and into a wall outlet.



CONNECT THE USB CABLE

1. Plug the round end of the USB power cord into the power jack on the scanner.
2. Plug the flat end of the USB power cord into an available USB port on the back of the computer.

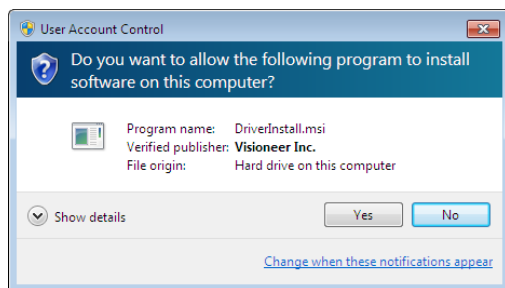


Note: Only use the USB power cable included with your device. Connecting any other type of USB power cable may damage your device and will void its warranty. If you do not have your USB power cable, you can order a new one by contacting our customer service department. Please refer to the Technical Support Card that you have received with your device for our company contact information or visit the Parts & Accessories page for your device at www.vioneer.com.

INSTALLATION

Please make sure of the following before you begin installation:

- If you are prompted to reboot during installation, please select **No**. Finish installing the rest of the software, then close all open windows and reboot your computer.
- The information in this guide may cover software not provided with the scanner you purchased. Please disregard any information about the software not applicable to your scanner.
- If your computer has AntiVirus or AntiSpyware software running, you may encounter alerts or messages during installation asking you to allow the installation to proceed. Although the messages will differ based on the software your computer is running, in each case you should allow the installation to proceed if that option is available. Alternatively, you can turn off the AntiVirus or AntiSpyware software before installing your scanner, but if you do, make sure to turn it back on again when installation is finished.
- If your computer is running Windows Vista or later, you may see the Windows User Account Control screen asking you to confirm system changes. Click the **Yes** button to allow the installation to proceed.

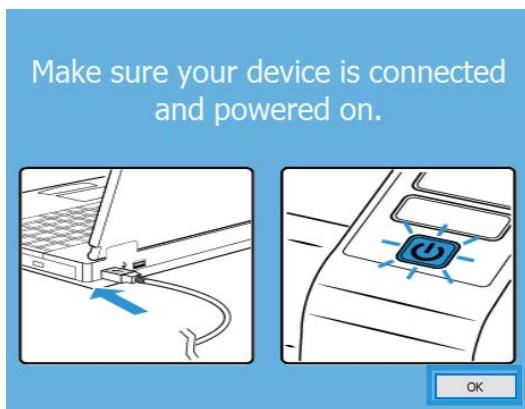


WINDOWS USB DRIVER INSTALLATION

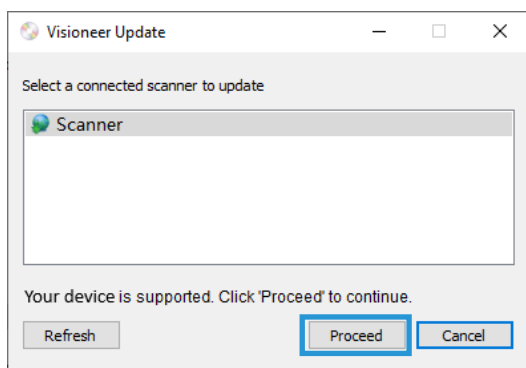
Follow these steps to install the driver to use the scanner via a USB connection to your PC. This allows only the logged in user to use the scanner.

1. Start Microsoft Windows and make sure that no other applications are running.
2. Turn on the scanner power.
3. Plug the USB cable into the USB port on the scanner then into a USB port on the computer.
4. Go to www.vioneer.com/install.
5. Launch the installer once the download is complete.

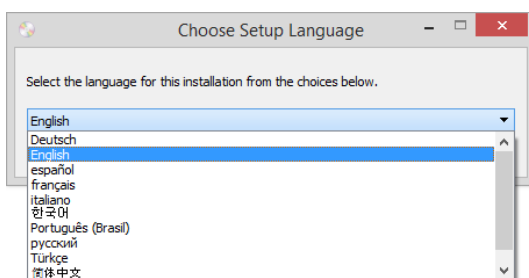
6. Click **OK**.



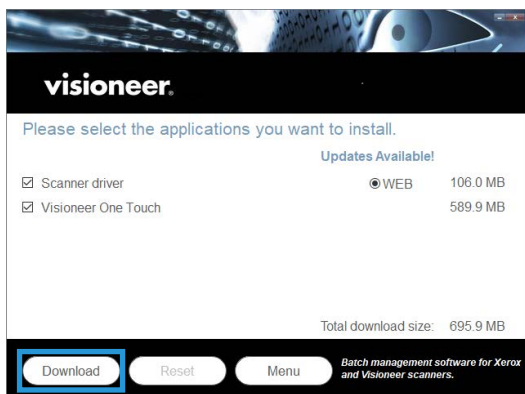
7. Select your scanner from the list. Click **Proceed**.



8. The Select Language window opens. Click the drop-down menu arrow and select the language to use. Click **OK**.



9. Make sure the boxes for **Scanner Driver** and **Vioneer OneTouch** are selected, as well as any other applications you want to install.

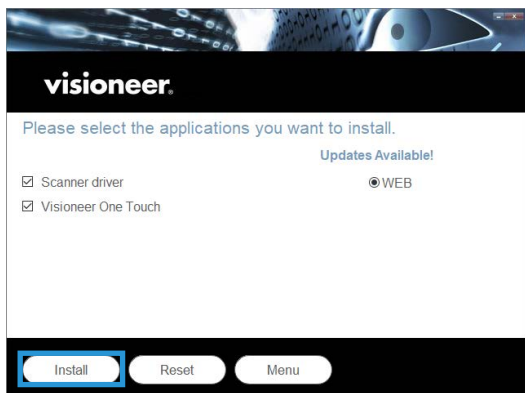


The software will have to first be downloaded by clicking **Download**. The total size of the download is shown at the bottom.

10. After the download has begun, it can be paused. If changes to the selections are required, it is necessary to click **Reset** while the download is paused. This will allow the settings to be changed.

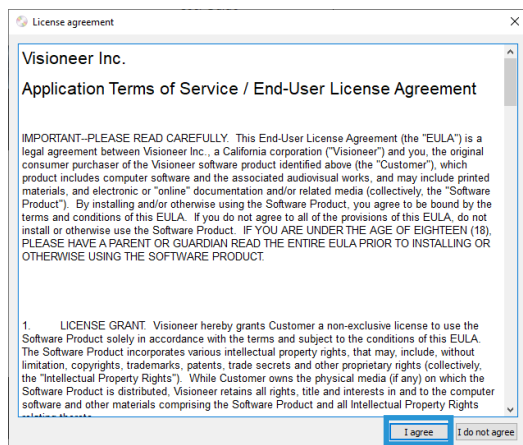
Note: Clicking the Reset button in either the Main menu or the Install menu will cause both partially completed and previously downloaded files to be deleted. In order to be installed they will have to be downloaded again.

11. Once all software has been downloaded, click **Install**.

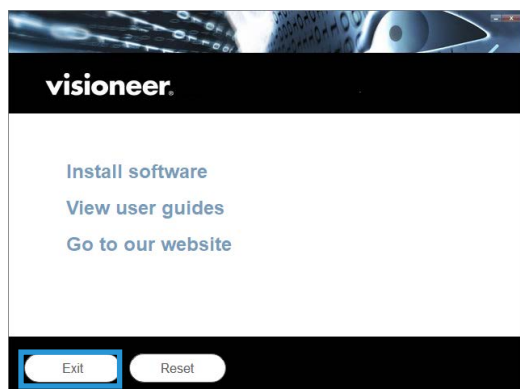


12. On the License Agreement window, read the license agreement. If you accept the terms, select **I Agree**.

If you click **I do not agree**, the installation will terminate.



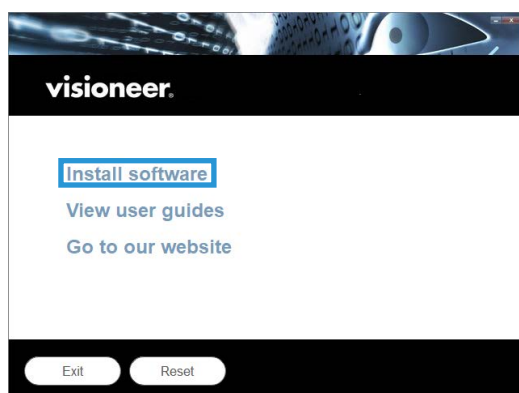
13. Once all of the software has been installed, Click **Exit**.



INSTALLING ADDITIONAL APPLICATIONS

Your scanner includes free, additional applications as described in the table below.

1. Once all of the software has been installed, click on **Install Software**.

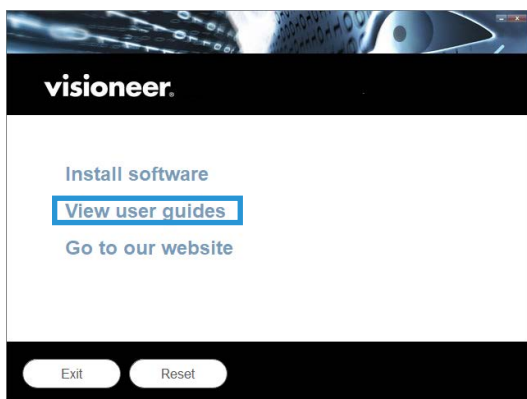


2. If a version of the software is already installed on the system, the option will be greyed out. However, if there is a newer version available, it will be possible to download and install.

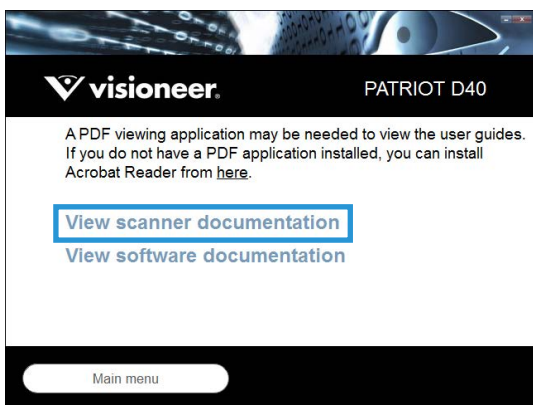
3. The software will have to first be downloaded by clicking **Download**.
4. Once all software has been downloaded, click **Install** now.
5. Follow the instructions on the screen to install each of the additional applications.

VIEW THE USER GUIDES

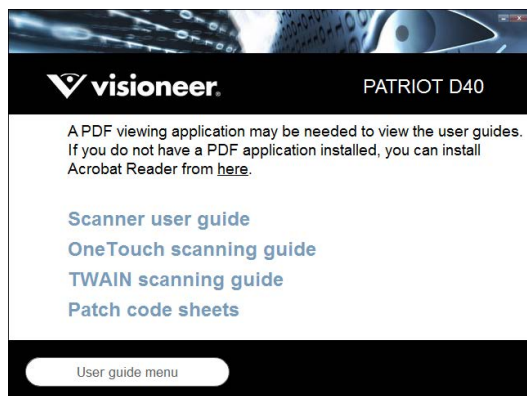
1. Once all of the software has been installed, click on **View user guides** from the Main menu.



2. Click on **View scanner documentation** to access the scanner user guide and scanning guides for OneTouch and TWAIN.



3. Click the links of the guides you want to view.



4. Click on the **User guide menu button** to return to the main user guide window, then select the other documentation section to view the user guides.
5. When you're finished, click **Main menu** to return to the Main menu window and click **Exit**.

REGISTER YOUR SCANNER

Registering your scanner is important as it provides you with access to our free telephone support service. Registration also gives you free access to software updates for your scanner.

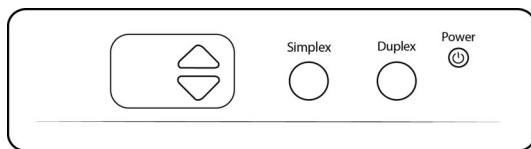
To register your scanner:

You will need an active Internet connection to register your scanner. If you do not have Internet access you can contact our customer service department to register the scanner. Please refer to the Technical Support Card, that you received with the scanner, for our customer service contact information.

1. Open an Internet Explorer window, or any other Internet browser you have installed on your computer.
2. In the web address field type www.visioneer.com.
3. Press Enter on your computer's keyboard or click the option on screen to go to the web address.
4. When the Visioneer® scanners web page loads click on **Register Your Product**.
5. Fill in the registration form, all required fields have an asterisk (*).
A valid email address is required for registration.
6. You will be asked to enter the serial number for the scanner, it is located on the back or underside of the scanner.
7. After filling in the form, click on **Submit Your Registration** to complete the registration.

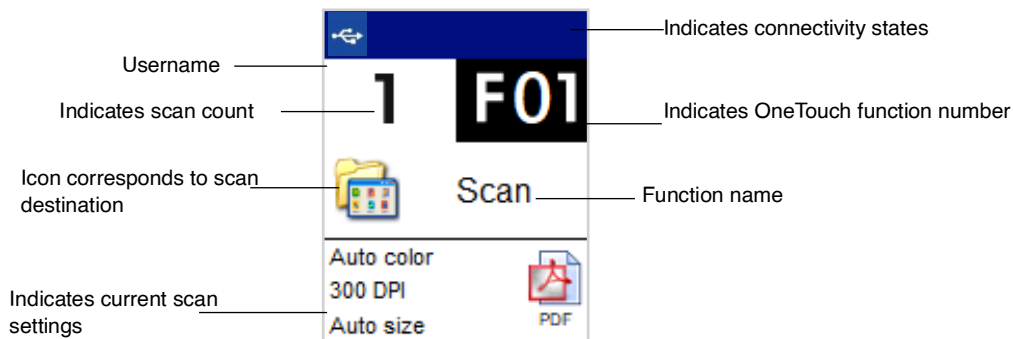
THE SCANNER'S LCD

The Scanner LCD and Button Panel



THE SCANNER LCD'S MAIN SCREEN

This screen will appear once driver installation is complete. The LCD can be slightly different. The example below appears once OneTouch is installed.



Accessing the scanner LCD menu

The scanner's LCD displays scanning information.

1. Hold the **Simplex** and **Duplex** buttons for more than two seconds to access the LCD scanner menu.
2. Use the up and down arrows to navigate through the menu.
3. Press the **Duplex** button to confirm your selection.

4. Press the **Simplex** button to go Back in the menu.

Scanner LCD Menu Options	
Information	
Scanner	<p>Displays the following:</p> <ul style="list-style-type: none"> • Model Name—This is the current scanner model. • FW Version—This is the version of the currently installed firmware on the scanner. • S/N (Serial Number)—This is the scanner's serial number. This is unique to every scanner <p>SW (Software) Versions</p> <p>Note: These may not be present if the scanner is being used with the mobile apps only.</p> <ul style="list-style-type: none"> • Driver—This is the version of the currently installed driver. • Acuity—This is currently installed Acuity version. • OT4 (OneTouch)—This is the version of the currently installed OneTouch. <p>This information can be helpful when calling for Technical Support.</p>
Counters	
Total	Displays the total amount of scans the scanner has performed.
Feed Roller	Displays the total number of times the roller has been used. This roller must eventually be replaced, see Replacing the Roller(s) .
Friction Roller	Displays the total number of times the roller has been used. This roller must eventually be replaced, see Replacing the Roller(s) .
Pickup Roller	Displays the total number of times the roller has been used. This roller must eventually be replaced, see Replacing the Roller(s) .
Flatbed	Displays the total amount of scans the flatbed has performed.
Cleaned	Displays the number of scans since rollers were last cleaned.
Support	
	Scan the QR code to open the scanner's web page.
Clean Mode	
	Used to rotate the rollers during cleaning. See Cleaning Inside the Automatic Document Feeder .

LOADING DOCUMENTS TO SCAN

Always remove any staples or paper clips from documents before inserting them into the scanner. Staples and paper clips can jam the feed mechanism and scratch the internal components. Also remove any labels, stickers, or Post-It™ notes that may come off during the scanning process and get stuck in the scanner. Misuse as described here will void your scanner's warranty. Please go to www.visioneer.com, select your product, and then click the "Warranty Program" link to view the warranty terms and conditions for your scanner.



SCANNING FROM THE AUTOMATIC DOCUMENT FEEDER (ADF)

Supported Document Types

You can scan the following types of documents and cards with this scanner.

- Maximum amount of paper in the input tray
 - Approximately 100 pages of 20 lb (75–80 g/m²) new printer paper
- Document size
 - Minimum size (width x length) – 4 x 5.5 inches (101 x 139 mm)
 - Maximum size (width x length) – 11.89 x 240 inches (302 x 6096 mm)

We recommend scanning one page at a time when the documents you are scanning are longer than 17 inches (430 mm).

- Mixed document stacks

- Scanner minimum to maximum without long document enabled

Arrange the documents so that all items are centered in the stack. The document sensor, paper separation, and feed rollers are located in the middle of the paper path. If smaller items are offset from the center they will not be detected. This will cause feeding issues and paper jams.

- Paper thickness between 16–28 lb paper (60–105 g/m²)

Documents to Avoid Scanning

The documents in this list can be scanned, but please note that scanning documents of this type will reduce the life of the scanner. Maintenance will be required more often and replaceable parts will wear faster. These types of documents will jam more frequently and damage to the original documents may occur. If you do choose to scan these document types, do not scan large batches. This type of use is not covered under the scanner warranty and alters replacement parts life expectancy.

We recommend you limit the amount or completely avoid scanning documents that are in this list.

- Curled, wrinkled or folded documents may cause paper jams or multiple pages being fed through the scanner at one time.
- Perforated or punched paper that could tear when the friction roller engages.
- Coated paper or photographs where the coating can flake off during scanning and leave residue in the scanner.
- Extremely smooth, shiny, or highly textured paper may cause the paper feed rollers to slip across the page and cause the scanner to report a paper jam.
- Carbonless copy paper may tear while being fed through the scanner and the pressure of the rollers may leave streaks on the page. The chemical coating on this paper will rub off on the rollers during the scan process, increasing the frequency of misfeeds and paper jams.
- Partially transparent paper such as tracing paper as any images from the opposite side of the page or black background will appear in the scanned images.

Unsupported Document Types

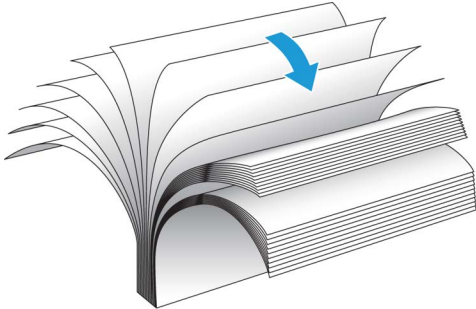
Do not scan the following types of documents as they may cause damage to the scanner.

- Items outside of the specified supported sizes, thickness, and weight defined in this document.
- Non-rectangular or irregularly shaped paper will cause the scanner to detect and report document skew errors or paper jams.
- Carbon paper that will leave residue in the scanner and on the rollers that will transfer to the next set of documents scanned.
- Documents with hard items attached such as paper clips, binder clips, and staples.
- Documents with wet ink or white-out.
- Thermal or photosensitive paper.
- Overhead projector sheets, plastic film, camera film, and any other type of transparent or partially transparent plastic item.
- Documents that have been glued together.

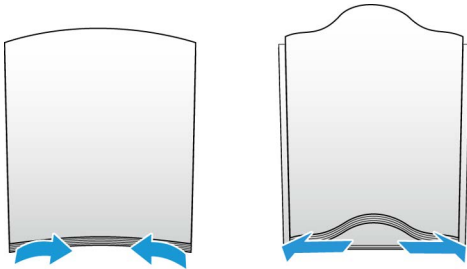
- Cloth or metallic sheets.

Preparing Documents for Scanning

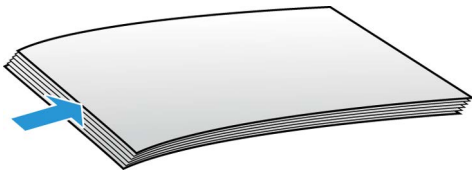
1. Fan the documents to make sure all pages in the stack are separated.



2. Bend and then flatten the document stack to make sure the horizontal edges are aligned to help prevent paper from skewing while being pulled through the scanner.

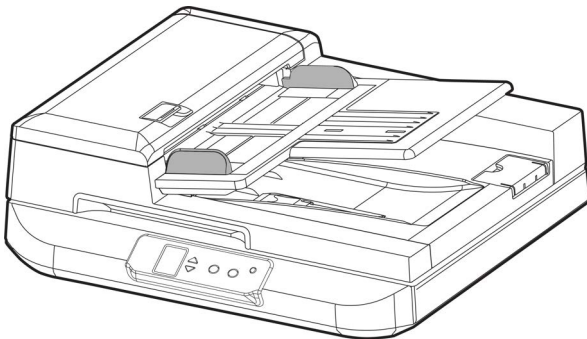


3. Pinch the ends to align the leading edges slantwise to help prevent multiple pages from being fed through at a single time.

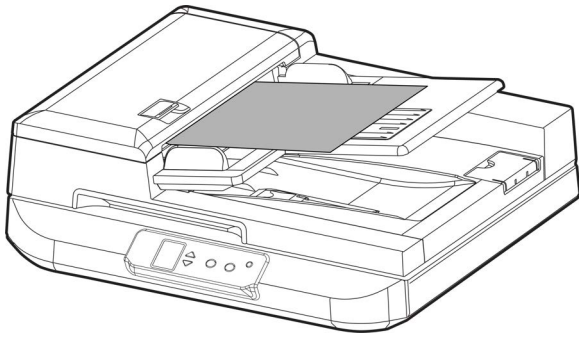


Loading Documents

1. Adjust the paper guide for the width of paper.



2. Load the documents face up with their tops into the Automatic Document Feeder.



3. You can now scan the documents using the scanner buttons, OneTouch, or one of the other scanning interfaces.

SCAN FROM THE FLATBED GLASS

Support Document Type

You can scan the following types of documents with this scanner.

- Document size
 - Minimum size (width x length) – 1 x 1 inches (25 x 25 mm)
 - Maximum size (width x length) – 12 x 16.54 inches (304 x 420 mm)

Loading Document

Use the Flatbed glass to scan documents on light weight paper, such as credit card receipts, or items that cannot be scanned with the Automatic Document Feeder, such as pages in a book or plastic cards.

Note: You must remove any pages from the Automatic Document Feeder before scanning from the Flatbed glass. If pages are in the Automatic Document Feeder, they will be scanned instead of the page on the Flatbed glass.

1. Remove any pages from the Automatic Document Feeder.

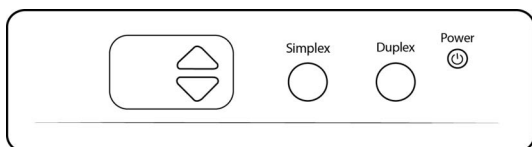
2. Open the scanner lid and place the page on the scanner glass, face down.



3. Close the lid.
4. You can now scan the document using the scanner buttons, OneTouch, or one of the other scanning interfaces.

SCANNING INTERFACES

- **OneTouch Control Panel**—When you press the Simplex or Duplex button on the scanner, the scanner starts scanning using the settings for the current LED number. The scanned image is then sent to a destination on your computer or network drive.



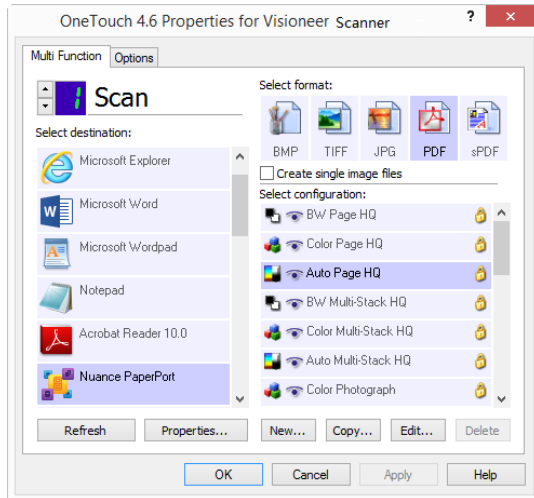
Scanner Control Panel

- **OneTouch Button Panel**—Use this scan option when you want to scan from the computer screen. Scanning from the on-screen OneTouch Button Panel is the same as selecting a scanning option on the scanner, except you click an icon that represents the function.

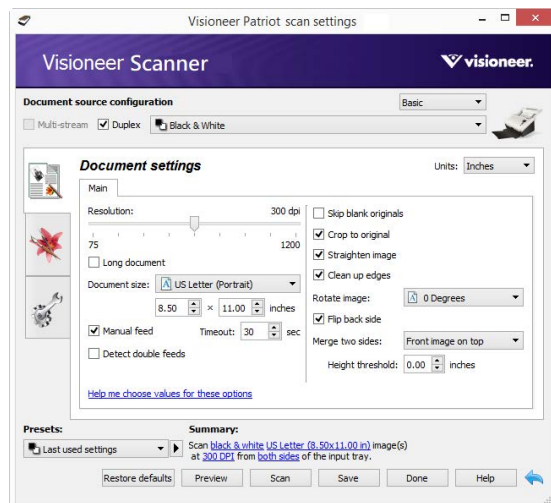


OneTouch Button Panel

Please refer to the OneTouch scanning guide on www.visioneer.com. You can also click the **Help** button in the OneTouch Properties window to open the instructions in an Internet browser.



- **TWAIN and WIA Interface**—This option uses your scanner's TWAIN interface to scan. Select scanning options before scanning, put the document in the scanner, then click the **Scan** button in the TWAIN interface window.



Please refer to the TWAIN scanning guide on www.visioneer.com. You can also click the **Help** button in the TWAIN interface to open the instructions in an Internet browser.

- **ISIS Interface**—This option uses the ISIS interface for scanning. Please refer the user manual for your ISIS scanning application for instructions on scanning with the ISIS interface.

MAINTENANCE

This section contains information about maintenance, troubleshooting, uninstalling, scanner specifications, and spare parts.

SAFETY PRECAUTIONS

When servicing the scanner you should take the following precautions to ensure your safety and prevent damage to the scanner.

Do These

- Wear protective gloves when cleaning the scanner with Isopropyl rubbing alcohol. Rubbing alcohol may irritate sensitive skin.
- Only perform scanner maintenance as described in this chapter.
- Keep the scanner and cleaning supplies away from any open flame or heat source as any form of alcohol is flammable.
- Always read the instructions in each section carefully, the instructions are specific to the part you are installing or servicing.
- Move the scanner to an area that has adequate room for opening the scanner.
- If your scanner has a power cord and/or power switch, always turn off the scanner and unplug the power cord before performing maintenance, unless the maintenance instructions below specifically state to leave the scanner plugged in and powered on.
- Always unplug the USB cable from the scanner before performing maintenance, unless the maintenance instructions below specifically state to leave the scanner plugged in.
- Wear an anti-static strap to prevent electrostatic discharge when touching metal components.
- Keep all cleaning supplies, scanner parts and accessories out of the reach of children.

Do Not Do These

- Never attempt installation of any part not described in this manual.
- Never service the scanner near a radiator or any other heat source.
- Never use aerosol sprays or compressed air, or attempt to lubricate parts with an oil or silicon spray.
- Never service the scanner in an area where there are open liquid containers.
- Never pour or spill liquid on the scanner or any of its components.

HARDWARE PROPERTIES

You can use the scanner's properties page to keep track of scanner maintenance, change some of the hardware options, configure the scanner interface behavior, and adjust application options that may be available for your scanner.

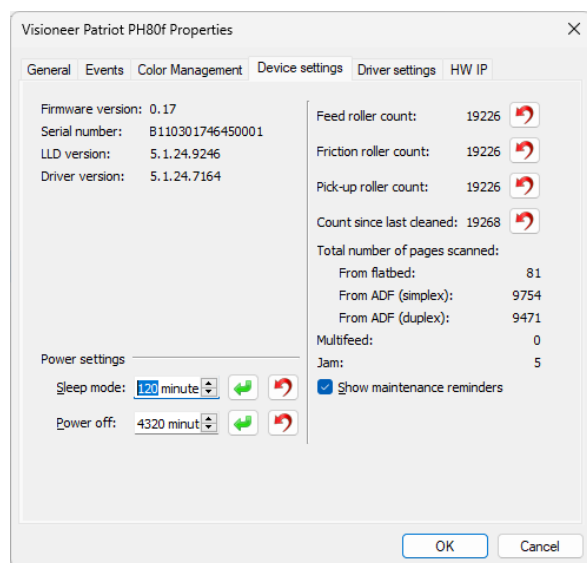
To open the scanner hardware properties page:

- **Windows 7 and later**—from the Windows Control Panel, open **Hardware and Sound** and then **Devices and Printers**.

Right-click on the scanner and then select **Scan properties** from the list. Click **Yes** if you are prompted by the Windows User Account Control to confirm that you want make changes to the system settings.

Device Settings

The Device Settings tab shows the hardware information for your scanner. The options on the Device Settings tab will be available based on whether or not the scanner hardware supports the feature. Some features described herein may not be available for the current scanner. Please disregard any information about features that you do not see in the interface for your scanner.



■ Scanner Details:

- **Firmware version**—this is the scanner's hardware processor version number.
- **Serial number**—the scanner's unique identification number.
- **LLD version**—the scanner's base driver version. This is not the OneTouch software revision, TWAIN or WIA driver versions.
- **Driver version**—this is the version of the scanner's TWAIN driver.

■ Scanner Maintenance:

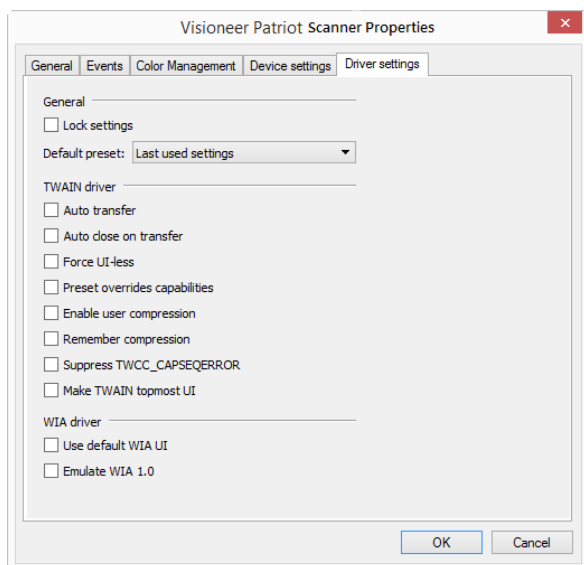
- **Counters**—click the reset button next to the counter you want to set back to 0.

■ Power Settings:

- **Sleep mode**—sleep mode is the low-power state when the scanner is not in use. You can adjust the amount of time you want the scanner to wait before it goes into low power.
 - Click the **green enter** button to save any changes in the Sleep mode field.
 - Click the **red reset** button to reset to the default timeout value.
- **Power off**—input the number of minutes you want the scanner to wait before it turns itself off.
 - Click the **green enter** button to save any changes in the power off field.
 - Click the **red reset** button to reset to the default timeout value.

Driver Settings

The options in this panel are for configuring how the TWAIN interface will behave in some scenarios. Please see the TWAIN scanning guide on www.vioneer.com for instructions.

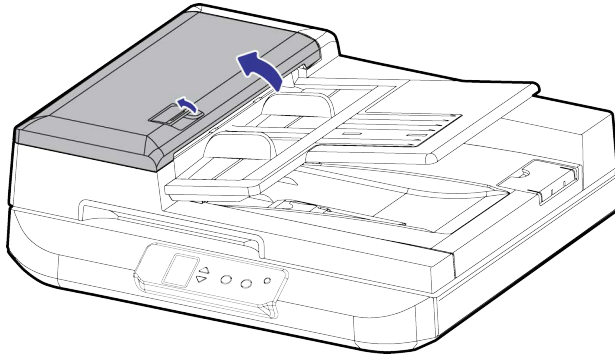


CLEARING PAPER JAMS

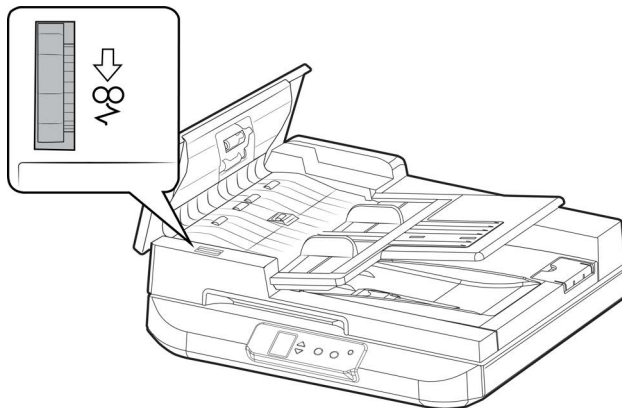
If your scanner stops scanning due to a paper jam in the Automatic Document Feeder, a warning opens after a few moments.

1. Open the Automatic Document Feeder cover.

Do not attempt to remove a jammed page with the scanner closed.



- If the page is jammed at the start of the paper path carefully pull it out of the scanner.
- If the page is jammed farther in the ADF, use the manual feed wheel to feed the jammed page through the ADF. And then pull out the jammed page from under the paper input tray.



2. Remove the jammed paper and close the cover.

To reduce the number of paper jams, smooth and straighten the paper before scanning, adjust the guides to the paper size, and insert the paper evenly into the ADF.

CLEANING THE SCANNER

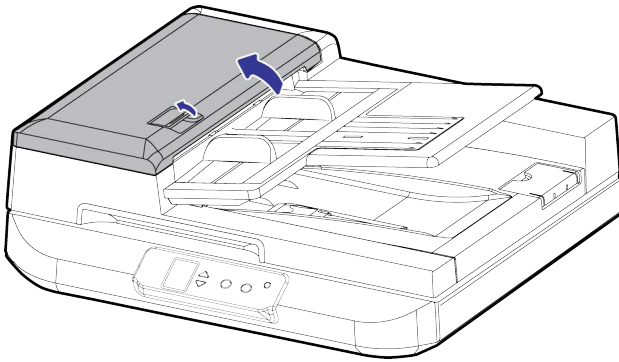
Cleaning Inside the Automatic Document Feeder

Cleaning the inside of the scanner helps to keep your scanner operating at optimum performance. You should clean the inside of the scanner at least once a week or after 1,000 pages have been scanned. If you are getting frequent paper jams, multiple pages feeding at the same time, or you're seeing lines in the scanned image, it is time to clean the scanner.

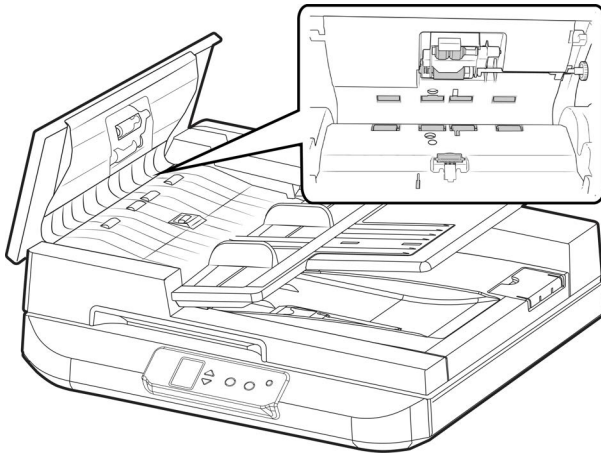
Note: Be careful when cleaning the rollers. All of the rollers, except the free rollers, are designed to rotate in one direction only. Do not force the roller to rotate in the opposite direction. Forcing the roller to rotate will damage it, and cause the scanner to feed pages incorrectly.

1. Wet a soft cloth with some Isopropyl rubbing alcohol (90%).

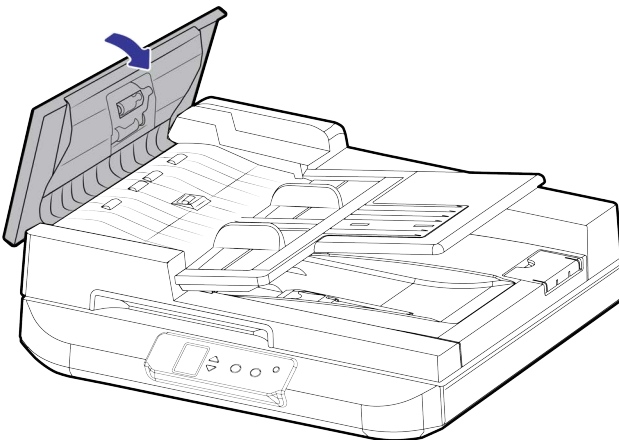
2. Open the Automatic Document Feeder cover.



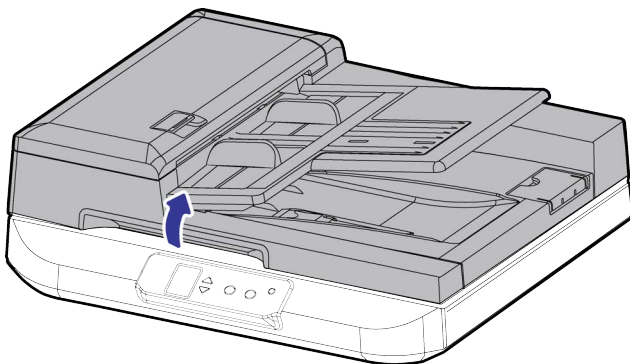
3. Wipe clean the rollers in the scanner. Rotate the rollers to clean the entire surface.
The following illustration shows where the rollers are located in the scanner.



4. Close the ADF door.



5. Lift the scanner lid.



6. Wipe clean the glass strip on the underside of the duplex lamp module. Wipe clean the glass strip in the body of the scanner.



7. Close the scanner when you're finished.

Cleaning the Scanner Glass

Scanning items that have excessive amounts of dirt or dust may dirty the glass. To ensure the best quality scanned item, wipe the scanner glass with a soft, dry, clean cloth to rid the glass of dust or other debris.

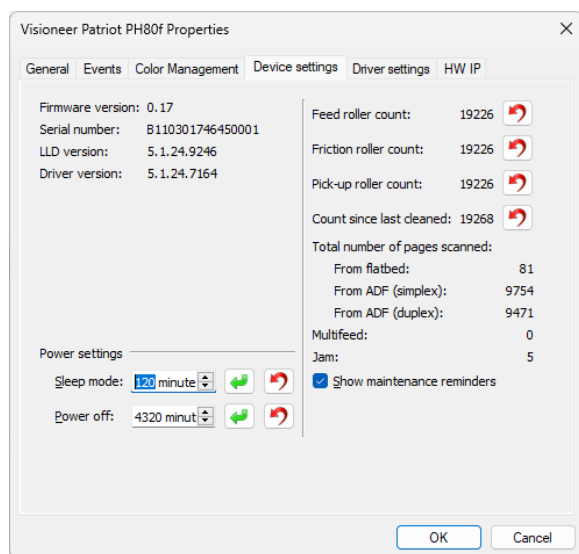
If any residue remains after wiping the glass with a dry cloth, try adding a few drops of Isopropyl alcohol (rubbing alcohol) to the cloth and wipe off the residue.



REPLACING THE ROLLER(S)

The friction roller and/or feed rollers will wear out and are designed to be user replaceable parts. Each section below indicates the expected scan life of the replaceable part.

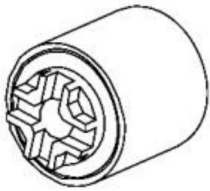
After replacing a part as described in this section, reset the counter in the scanner properties page in the Windows Control Panel. On the **Device Settings** tab, click on the red reset button next the part counter that you replaced.



Replacing the Friction Roller

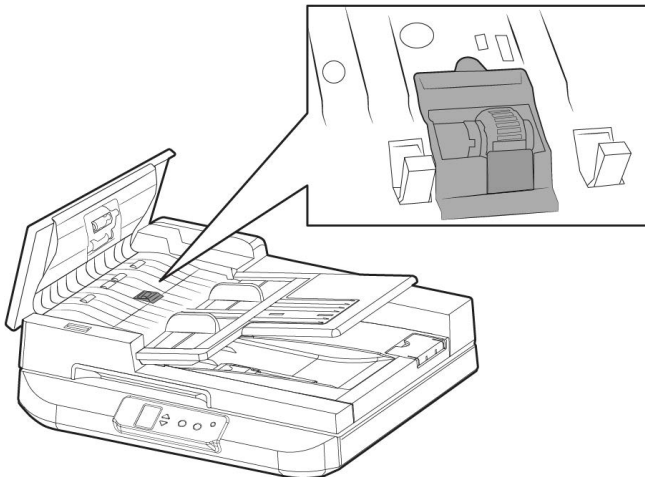
After scanning approximately 100,000 pages through the ADF, the friction roller may be worn out and you may experience problems with document feeding. In this case, it is highly recommended to replace the roller with a new one. For ordering the friction roller, please consult your nearest dealer and follow the procedure in below to replace it.

Replacement parts can be purchased from the Parts & Accessories page for your scanner at www.visioneer.com.

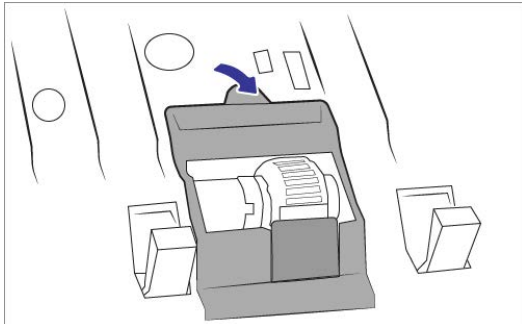


Discard the parts as you remove them from the scanner, the parts cannot be reused and are a choking hazard.

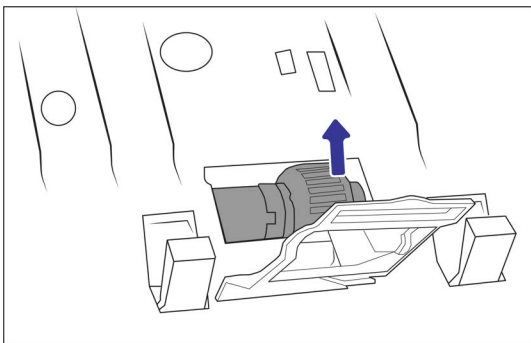
1. Open the ADF cover. The ADF detachable friction roller is located on the top of the duplex lamp module.



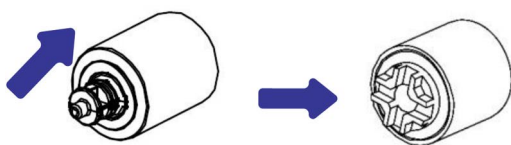
2. Pull out the upper part of the friction roller cover.



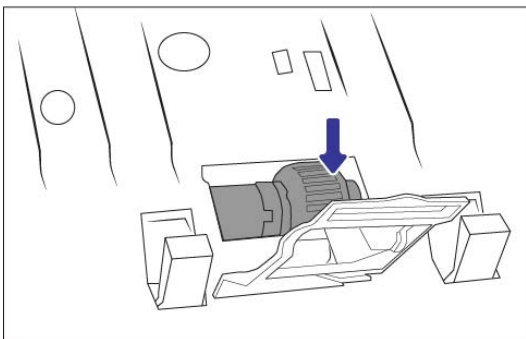
3. Lift the friction roller assembly and out of the scanner.



4. Remove the friction roller from the assembly.



5. Put the new friction roller and place the assembly into the scanner.

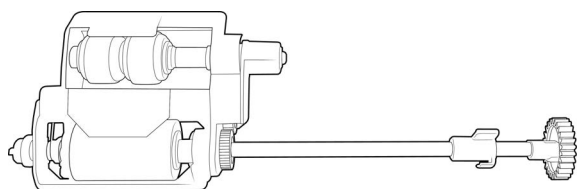


6. Press the roller cover down until you hear a "click" when it locks in place.
7. Close the scanner when you're finished.

Replacing the Feed Roller

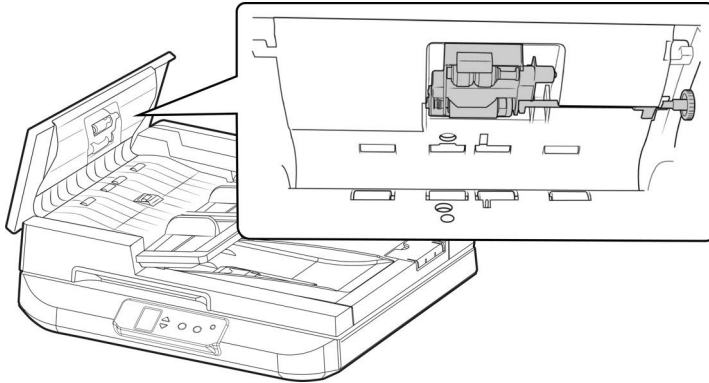
The roller will wear out and is designed to be a user-replaceable part. A worn roller can cause documents to feed in skewed at an angle, or multiple pages to feed at the same time. Before replacing the roller you should clean it as excessive dust on the roller will make it appear worn and smooth. You cannot properly diagnose a worn roller until you have cleaned it. You should generally replace the roller every 200,000 scans.

Replacement parts can be purchased from the Parts & Accessories page for your scanner at www.vioneer.com.

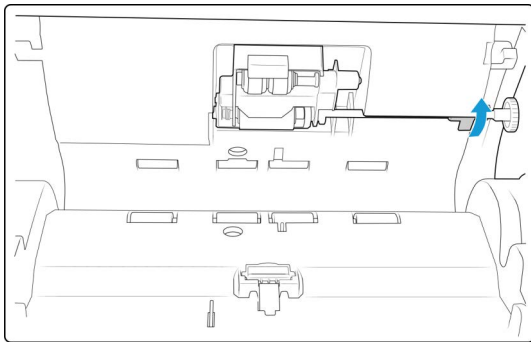


1. Open the Automatic Document Feeder cover.

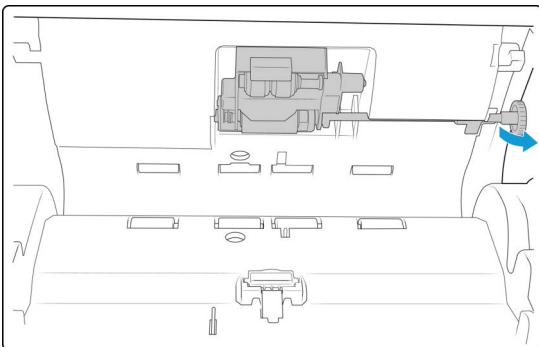
The roller assembly fits in a channel in the ADF cover.



2. The roller is held in place with a lock tab that rotates to lock and unlock it. To unlock the tab, rotate it upward until the small lock flange is completely free.



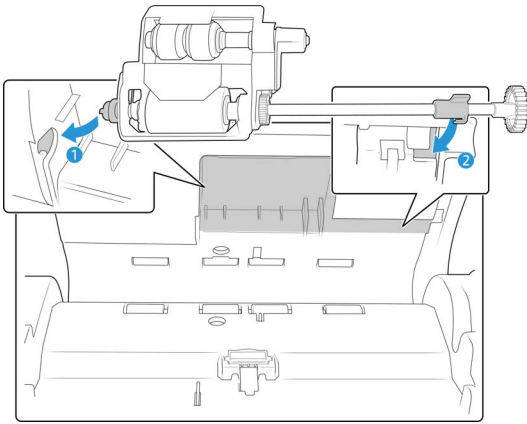
3. Remove the roller from the scanner and discard it, it cannot be repaired.



4. Before installing the new roller, clean any dust that may have gotten on it during shipping.

5. Insert the left end of the new roller assembly into the hole in the roller channel. Angle the roller module up and into the roller channel. Align the tab on the lock flange with the slot in the scanner.

Hold the feed roller module fully in the scanner door while you lock it in place.



6. Use the lever to rotate the locking tab into the slot in the scanner. Push on the lever until it clicks in place and locks the roller in the scanner.

The lock will “click” into place when it is secure. However, if it does not rotate easily into the housing, make sure the flange is properly seated in its latch.

7. Close the scanner when you’re finished.

TROUBLESHOOTING

Problem: The scanner won’t scan. What’s wrong?

Check for one of these possible causes:

- **Are the cables loose or not plugged in securely?** Inspect the cable connections. Make sure the cables are plugged in securely.
- **Is the scanner’s status light on?** Turn on the scanner’s power. If the status light doesn’t come on, plug the power supply into another electrical outlet. If you are using a UPS battery back-up or power strip, try plugging the scanner directly to a wall outlet.
- **Did you restart the computer and scanner?** If the scanner gets a paper jam, or loses connection because of an error, try restarting your computer and power cycling the scanner.
- **Did you plug the scanner into a USB hub?** If you’re using a USB hub to connect the scanner try plugging the scanner’s USB cable directly to the back of the computer. It is not recommended that you use the scanner with a USB hub, if you are using a hub, the hub must have its own power supply.
- **Is the USB cable 6’ or less?** If you are using a USB cable that is longer than 6’ you may lose connection to the scanner. The recommended USB cable length is 6’ or less, the USB cable provided with your scanner is within this range.
- **Did you select another image source in the scanning software?** If you use multiple imaging devices with your computer, such as a camera, all-in-one printer, or another scanner, you may have selected another source for images. Make sure Vioneer® Patriot PH80f is selected as the scanner.

Problem: Why does my scanner not function after performing a system restore on Windows?

The system restore process may have corrupted some of the driver components. It is recommended that you reinstall your scanner driver. Please refer to [Uninstalling Your Scanner](#) for installation instructions.

Problem: Why won't my scanner buttons work after scanning with Windows Image Acquisition (WIA)?

After performing a scan using the WIA interface you must close the application you were using before scanning with the buttons on the scanner. This does not occur when scanning using the TWAIN or ISIS interface.

Problem: Why won't my scanner work after the computer has been sitting idle for several hours?

To resolve the problem, simply turn off the scanner power then turn it back on again.

This may occur after Windows goes into power saving mode to "hibernate" the computer into a low power state. When you move your mouse or type on the keyboard it "wakes" the computer back up and restores full power to the system. This power fluctuation during the computer's hibernating period may sometimes cause the scanner to lose communication to the computer.

Problem: The installation will not complete successfully. If installation finishes, the scanner's OneTouch options do not seem to work properly.

A likely cause is that some driver programs are already installed on your computer for another scanner. They may be interfering with the installation and OneTouch options, and you need to remove those other drivers and re-install your Vioneer® scanner. You can remove these programs from the Windows Control Panel. Please refer to the user manual provided with your other scanner hardware for instructions about removing the driver and software for that unit.

Problem: My computer keeps giving me out of hard drive space error messages.

The minimum requirement of free hard drive space is for the installation of the scanner driver and basic, low resolution, scanning. High resolution scans result in files that can be over 1 gigabyte in size. Free up some space on your hard drive for the software to be able to save the scanned images.

Problem: The paper jams the ADF.

To reduce the number of paper jams, smooth and straighten the paper before scanning, and adjust the guides to the paper size. Paper fed into the ADF at an angle can cause the feed mechanism to jam. If paper jams are occurring more frequently, try cleaning the roller with a soft cloth dampened with Isopropyl rubbing alcohol. Excessive dust on the roller can make it appear worn and will cause issues feeding paper. See [Cleaning Inside the Automatic Document Feeder](#) for cleaning instructions.

Problem: The ADF won't feed pages properly.

A dirty or worn roller can cause documents to feed in skewed at an angle, or multiple pages to feed at the same time. First, try cleaning the rollers as described in [Cleaning Inside the Automatic Document Feeder](#). If the problem persists, the friction and/or feed rollers may need to be replaced. Please see [Replacing the Roller\(s\)](#).

Problem: If the USB cable is disconnected during a scan, the scanner does not reconnect when the USB cable is plugged back in.

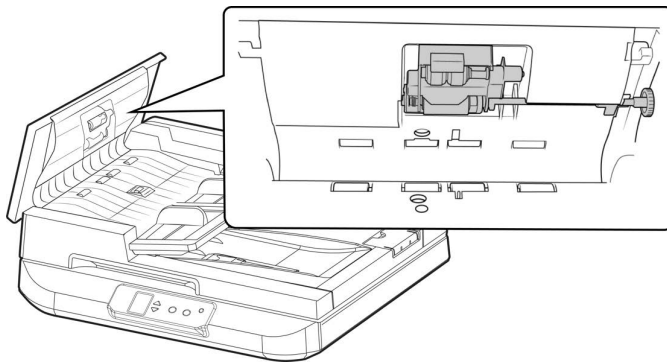
Unplug the power cable from the scanner, and then plug it back in.

If the scanner does not reconnect:

1. Unplug the power cable from the scanner.
2. Restart your computer.
3. After the restart is complete, plug the power cable back in.

Problem: The scanner reports a Double Feed error when there is only one page in the scanner.

Try cleaning the double feed detection sensor. Dust on the sensor may prevent the sensor from working properly.



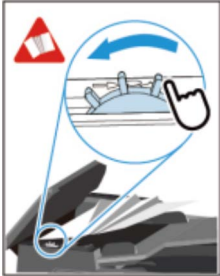




Error Light Troubleshooting Codes

Normal Operation

- **Steady blue:** indicates the scanner is ready to scan.
- **Slow flashing blue:** indicates the scanner is in low power mode.
- **Rapid flashing blue:** indicates the scanner is waking up from low power mode.
- **Steady red:** the scanner is busy or it is not connected to the computer.
- **Flashing red:** the scanner is reporting an error.

Error Codes

If there is error during scanning, the LED light will be flashing in red color and error drawing will be displayed. Refer to the following table to clear the error conditions.

Error Drawing/Meaning	Cause	Solution
<p>Paper jam</p> 	<ul style="list-style-type: none"> Original has become stuck in the feeder. Original exceeds max. allowable length. 	<p>Open the feeder cover and pull the original out of the feeder.</p>
<p>Feeder cover opened</p> 	<p>Feeder cover is open.</p>	<p>Close the feeder cover.</p>
<p>Misfeed</p> 	<p>Failed to pick paper.</p>	<ul style="list-style-type: none"> Fan the documents. Load the document with its edges slightly touch the paper guides.
<p>Multi-Feed</p> 	<p>More than one pieces of paper fed in the feeder.</p>	<ul style="list-style-type: none"> Remove the paper. Fan the paper for several times. Make sure the edge of paper near the paper guide and try again.
	<p>Scanner is locked.</p>	<p>Move the lock switch to the "unlocked" position and restart the scanner.</p>

UNINSTALLING YOUR SCANNER

Please leave the scanner's USB cable plugged into the computer while uninstalling the scanner driver. Unplug the USB cable when directed to do so in the instructions below.

Use the options in the Windows Control Panel to remove the scanner driver and modules, and any other software provided with the scanner.

Open the list of installed programs in the Windows Control panel.

- Windows 7 and later: Open Programs and Features

Uninstalling the scanner driver:

1. In the list of installed programs click on **Vioneer® Patriot PH80f driver**.
2. Click the **Change/Remove** or **Uninstall** button.
3. Click **Yes** when asked to confirm that you want to remove the driver.

When the driver uninstallation is complete the progress window will automatically close.

4. Turn off the scanner and unplug the USB cable.
5. Reboot the computer if you are prompted to do so.

Follow these instructions to remove any of the other software you installed with your scanner. Depending on the software provided with your scanner, and which applications you installed during the scanner setup, the application list may include:

- OneTouch
- OneTouch OCR module

Uninstalling Vioneer Acuity™:

Vioneer Acuity is automatically installed when you install the scanner driver using the installation disc. You can also download the Vioneer Acuity module from the support pages for your scanner at www.vioneer.com. Vioneer Acuity is a utility with advanced image processing options to instantly improve the visual clarity of anything you scan.

1. In the list of installed programs select **Vioneer Acuity Assets**.
2. Click **Yes** when asked to confirm you want to remove the software.

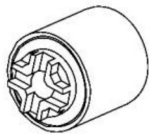
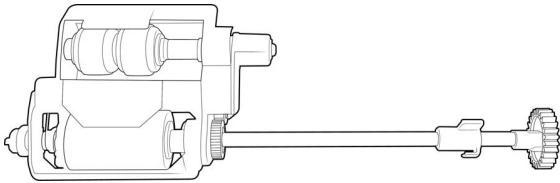
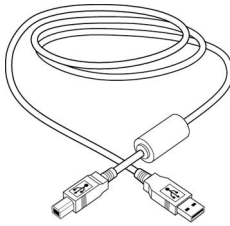
Depending on the method of installation, and your scanner model, there may be multiple entries for Vioneer Acuity in the installed programs list. The additional entries in this list are the image processing libraries needed to support various scanner models. These additional items will be called "Vioneer Acuity Assets" followed by a version number. In the scenario described here, when you want to uninstall Vioneer Acuity make sure you select and uninstall Vioneer Acuity. If you uninstall one of the entries labeled as an "asset" you will still need to uninstall the main Vioneer Acuity utility.

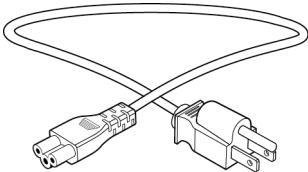
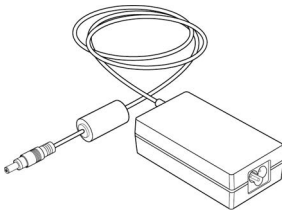
VISIONEER® PATRIOT PH80f SPECIFICATIONS

Scanner Specifications	
Document Requirements (ADF)	
Minimum Item Size	4 x 5.5 inches (102 x 140 mm)
Maximum Item Size	11.89 x 240 inches (302 x 6096 mm)
Capacity	100 pages of 20 lb printer paper (75-80 g/m ²)
Paper Thickness	16–28 lbs. (60–105 g/m ²)
Document Requirements (Flatbed)	
Minimum Item Size	1 x 1 inches (25 x 25 mm)
Maximum Item Size	12 x 16.54 inches (304 x 420 mm)
Item Thickness	1.0 inch (25 mm)
Scanner Specifications	
Optical Resolution	600 dpi
Resolutions (Firmware/ Hardware)	100, 150, 200, 300, 400, 500, 600 dpi
Interpolated Resolutions (Visioneer Acuity)	75 and 1200 dpi (these resolutions are available when Visioneer Acuity is installed)
Output Bit Depth	24-bit color, 8-bit grayscale, 1-bit bitonal (black & white)
Scan Method	Duplex Automatic Document Feeder (ADF)
Image Sensor	Contact Image Sensor
Light Source	RGB LED lamp
Interface	USB 3.1 Gen 1 (USB 2.0 and 3.0 compatible)
Certifications	FCC CLASS A
Operating Temperature	50° ~ 95° F (10° ~ 35° C without condensation)
Relative Humidity	10% ~ 85% (@35° C without condensation)
Scanner Dimensions	
Length	23 inches (585 mm)
Width	19.6 inches (499 mm)
Height	7.6 inches (192 mm)
Weight	24.2 pounds (11 kg)
Power Information	
Power Supply	DC Jack, 3P, 100~240Vac, 19Vdc, 3.42A, 64W, Class 1, ENERGY STAR, RoHS
Power consumption	< 50 Watts (during operation) < 10 Watts (on standby) < 2.9 Watts (sleep mode) < 0.3 Watt (power off)

Scanner Specifications	
Cable Information	
AC Power Cord	US(UL/CSA)—3P, 10A/125V, L=1800mm, 3C*18AWG, BLACK, PH8B2EDJF0A-05B, RoHS
USB cable	3.1 USB Gen 1, 1800 mm, RoHS Compliant
Software Information	
Supported Operating Systems	<ul style="list-style-type: none"> • Microsoft: <ul style="list-style-type: none"> – 32-bit or 64-bit 7 (Service Pack 1) – 32-bit or 64-bit 10 – 64-bit 11
Scanner Drivers	<ul style="list-style-type: none"> • Microsoft: <ul style="list-style-type: none"> – TWAIN, WIA, ISIS
Bundled Software	<ul style="list-style-type: none"> • Microsoft: <ul style="list-style-type: none"> – Vioneer® OneTouch® – Vioneer® Acuity Module

VISIONEER® PATRIOT PH80f PARTS LIST

Part Name	Part Number	
Friction roller	65-3350-000	
Pickup roller	65-3351-000	
USB Cable	35-0253-000	

Part Name	Part Number	
AC Power Cord	35-0103-000 (US)	
Power Supply	3P,19Vdc, 3.42A, 64W 37-0108-000	

APPENDIX A: COPY REGULATIONS

UNITED STATES

Congress, by statute, has forbidden the reproduction of the following subjects under certain circumstances. Penalties of fine or imprisonment may be imposed on those guilty of making such reproductions.

1. Obligations or Securities of the United States Government, such as:

Certificates of Indebtedness	National Bank Currency	Coupons from Bonds
Federal Reserve Bank Notes	Silver Certificates	Gold Certificates
United States Bonds	Treasury Notes	Federal Reserve Notes
Fractional Notes	Certificates of Deposit	Paper Money

Bonds and Obligations of certain agencies of the government, such as FHA, etc.

Bonds. (U.S. Savings Bonds may be photographed only for publicity purposes in connection with the campaign for the sale of such bonds.)

Internal Revenue Stamps. (If it is necessary to reproduce a legal document on which there is a canceled revenue stamp, this may be done provided the reproduction of the document is performed for lawful purposes.)

Postage Stamps, canceled or uncanceled. (For philatelic purposes, Postage Stamps may be photographed, provided the reproduction is in black and white and is less than 75% or more than 150% of the linear dimensions of the original.)

Postal Money Orders.

Bills, Checks, or Drafts of money drawn by or upon authorized officers of the United States.

Stamps and other representatives of value, of whatever denomination, which have been or may be issued under any Act of Congress.

2. Adjusted Compensation Certificates for Veterans of the World Wars.
3. Obligations or Securities of any Foreign Government, Bank, or Corporation.
4. Copyrighted material, unless permission of the copyright owner has been obtained or the reproduction falls within the "fair use" or library reproduction rights provisions of the copyright law. Further information of these provisions may be obtained from the Copyright Office, Library of Congress, Washington, D.C. 20559. Ask for Circular R21.

5. Certificates of Citizenship or Naturalization. (Foreign Naturalization Certificates may be photographed.)
6. Passports. (Foreign Passports may be photographed.)
7. Immigration Papers.
8. Draft Registration Cards.
9. Selective Service Induction Papers that bear any of the following Registrant's information:

Earnings or Income	Dependency Status	Court Record
Previous military service	Physical or mental condition	

Exception: U. S. Army and Navy discharge certificates may be photographed.

10. Badges, Identification Cards, Passes, or Insignia carried by military personnel, or by members of the various Federal Departments, such as FBI, Treasury, etc. (unless photograph is ordered by the head of such department or bureau.)
11. Reproducing the following is also prohibited in certain states: Automobile Licenses — Drivers' Licenses — Automobile Certificates of Title.

The above list is not all inclusive, and no liability is assumed for its completeness or accuracy. In case of doubt, consult your attorney.

CANADA

Parliament, by statute, has forbidden the reproduction of the following subjects under certain circumstances. Penalties of fines or imprisonment may be imposed on those guilty of making such copies.

1. Current bank notes or current paper money.
2. Obligations or securities of a government or bank.
3. Exchequer bill paper or revenue paper.
4. The public seal of Canada or of a province, or the seal of a public body or authority in Canada, or of a court of law.
5. Proclamations, orders, regulations or appointments, or notices thereof (with intent to falsely cause same to purport to have been printed by the Queen's Printer for Canada, or the equivalent printer for a province).
6. Marks, brands, seals, wrappers or designs used by or on behalf of the Government of Canada or of a province, the government of a state other than Canada or a department, board, Commission or agency established by the Government of Canada or of a province or of a government of a state other than Canada.
7. Impressed or adhesive stamps used for the purpose of revenue by the Government of Canada or of a province or by the government of a state other than Canada.
8. Documents, registers or records kept by public officials charged with the duty of making or issuing certified copies thereof, where the reproduction falsely purports to be a certified copy thereof.
9. Copyrighted material or trademarks of any manner or kind without the consent of the copyright or trademark owner.

The above list is provided for your convenience and assistance, but it is not all inclusive, and no liability is assumed for its completeness or accuracy. In case of doubt, consult your solicitor.

OTHER COUNTRIES

Copying certain documents may be illegal in your country. Penalties of fine or imprisonment may be imposed on those found guilty of making such reproductions.

- Currency notes
- Bank notes and cheques
- Bank and government bonds and securities
- Passports and identification cards
- Copyright material or trademarks without the consent of the owner
- Postage stamps and other negotiable instruments

Note: this list is not inclusive and no liability is assumed for either its completeness or accuracy. In case of doubt, contact your legal counsel.

APPENDIX B: COMPLIANCE INFORMATION

PRODUCT RECYCLING & DISPOSAL

USA & Canada

If you are managing the disposal of your Visioneer® product, please note that the product may contain lead, mercury, Perchlorate, and other materials whose disposal may be regulated due to environmental considerations. The presence of these materials is fully consistent with global regulations applicable at the time that the product was placed on the market. For recycling and disposal information, contact your local authorities. Information for the U.S. can also be found on the Electronic Industries Alliance website.

Perchlorate Material - This product may contain one or more Perchlorate-containing devices, such as batteries. Special handling may apply.

European Union

RoHS and WEEE Compliance

This product is compliant with RoHS Regulations of the European Parliament and Council Directive on the Restrictions of the Use of Certain Hazardous Substances in Electrical and Electronic Equipment (2011/65/EU), and with the Waste Electrical and Electronic Equipment (WEEE) Directive (2012/19/EU).

Some equipment may be used in both a domestic/household and a professional/business application.

Professional/Business Environment

Application of this symbol on your equipment is confirmation that you must dispose of this equipment in compliance with agreed national procedures. In accordance with European legislation, end of life electrical and electronic equipment subject to disposal must be managed within agreed procedures.



